

BLOWLAMP NEWS

BN 98

MARCH

2017

The Newsletter of the Blowlamp Society – Editor Graham Stubbs - blowlampsociety@gmail.com

www.blowlampsociety.com



“THE LITTLE WONDER” No.2

IN THIS ISSUE

**WRIGHTS LYMN “FIREMAN”
PHOTOS FROM COLLECTIONS
MORE FLAMES**

**BLADON AUTOMATIC SAFETY VALVE
AUSTRALIAN “SPITFIRE”
SIEVERT “VAPOURIA” 17B**

COVER PHOTO

The image for the cover photo was supplied by Michel Cochard, who has provided many more excellent blowlamp pictures, which will be appearing on the Blowlamp Society's website.

THE LITTLE WONDER blowlamp is discussed in BN 90, March 2015.

MEMBERS PASSING

Sadly we have to report that the Blowlamp Society has lost two of its early members:

Ian Gubb, the son of long-time member Ray Gubb, said:

"Thank you for the correspondence re the renewal of my fathers' Blowlamp News subscription. Unfortunately, my father passed away earlier in the year. We handed most of his collection to a museum in Kent and only kept a few of his more rare lamps for sentimental reasons. In passing I would like to add how much he enjoyed reading the Blowlamp News and appreciated his contributions being published."

Ray Gubb was a frequent contributor of material for Blowlamp News and an early supporter of the creation of a website. [Editor.]

Mike Farr's daughter Selina, reported that her father passed away recently. He was one of the Blowlamp Society's earliest members says Keith Hawkins.

BOOKS ABOUT BLOWLAMPS

The **French** blowlamp collectors' organization "L'Association Française des Amateurs d'Outils Anciens à Flamme" publishes seven books about blowlamps from various countries. Prices are in the range 25 to 45 Euros per volume.

- | | |
|---|---|
| 1. France | 5. France (more) |
| 2. Sweden | 6. Worldwide, except France |
| 3. Germany | 7. Worldwide, including some USA and UK |
| 4. Austria, Belgium, Spain, Italy & Switzerland | |

Contact: Lamptérophile N°580, Les Giraudoux Sud 24150 LALINDE FRANCE
Tel : 0971304507 lampteroophile.club.france@gmail.com
Website: <http://www.lampeasouder.fr/en/>

The **American** club **BTCA** publishes two books about blowtorches:

VINTAGE BLOWTORCHES

and MORE VINTAGE BLOWTORCHES

They can be obtained on ebay, or by contacting Ron Carr at btca@cox.net

THE BLOWLAMP SOCIETY WEBSITE

www.blowlampsociety.com

Most of the past issues of **BLOWLAMP NEWS** are now on the site, together with an index to all issues. The most recent are in the MEMBERS section. (*Let me know if you have any problem using your user name / password.*)

The CATALOGUE ILLUSTRATIONS section of the website has more than 200 pages of illustrations of British manufacturers' blowlamps.

The first attempt at implementing a FORUM ran into security issues with Russian hackers who attempted to hi-jack it. Expect to have a new, more secure, version soon.

THE BLADON AUTOMATIC SAFETY VALVE

By Graham Stubbs

I receive many emails from non-members responding to the Blowlamp Society website. One of these came with questions about a grandfather's old Bladon blowlamp. My reply identified the Bladon model B62, and I encouraged the owner to clean it. The email exchange prompted me to look more closely at an example in my own collection, and to understand what that little coiled-spring loaded valve is all about.



BN 71 (March 2010) contains Ray Hyland's article on this subject together with the patent drawing for British patent 338,776, which was awarded to Bladon in 1930, and extracts from the patent description.

The purpose of the valve is to supplement the automatic valve that is internal to the pump housing. The idea is to prevent leakage into the pump cylinder and resultant risk of fire at the top of the pump. The patent description includes this wording:

"... the coiled spring holds the needle valve normally upon its seating, in a position in which it is closed and in which any possibility of the passage of liquid from the fuel container to the pressure pump is prevented.

"If it is desired to operate the pressure pump, however, the additional valve is turned against the action of the spring by the thumb or finger of the operator, in which case the pressure pump can be operated in the usual manner, the valve being automatically closed when the thumb or finger is removed. ...

"The thumb piece or lever is preferably arranged in a position in which it lies close to the handle of the blow lamp so that it is easily accessible and operable by the thumb of the hand which is grasping the handle, thus leaving the other hand free for operating the pump."

I tried operating the lever.... Yes, that giant [left] hand in the photo is mine



**MORE AUSTRALIAN BLOW LAMPS
THE UNIQUE SPITFIRE ADJUSTABLE BLOWLAMP**

By Arthur McNamara

SPITFIRE branded blow lamps were manufactured by Everyday Products Pty Ltd who had recently relocated to warehouse and showroom premises at 337 Kent Street Sydney, Australia. (See BN 76 for other 'Spitfire branded Blow Lamps manufactured in Australia').

Together with the other major blow lamp manufacturing companies in Australia, production started about 1942 /1943 and each of those companies faced the same problems with the of supply of materials, the availability of labour and other war time restrictions and conditions as those described in the "Original LANRAY" article published in BN97.



EARLY VERSION ONE PINT & TWO PINT "SPITFIRE" ADJUSTABLE BLOWLAMPS

Everyday Products Pty Ltd was an established company (prior to becoming blow lamp manufacturers), trading as 'Manufacturers Representatives' and Retailers of a wide range of Household Goods and Rural Supplies (Farmer's supplies) sold through their city showroom premises and by Mail Order.

It is not known how or when the company became interested in Blow Lamps, but on the 15th September 1941, Robert Harry Bingle, a Sydney based engineer lodged Australian patent No.115,867 for an adjustable blow lamp which when approved a year later on the 1st October 1942 became known as the "SPITFIRE Adjustable Blow Lamp" manufactured by Everyday Products. Pty Ltd. It was not the first adjustable blow lamp to be patented or manufactured but it was 'unique' in style and appearance.

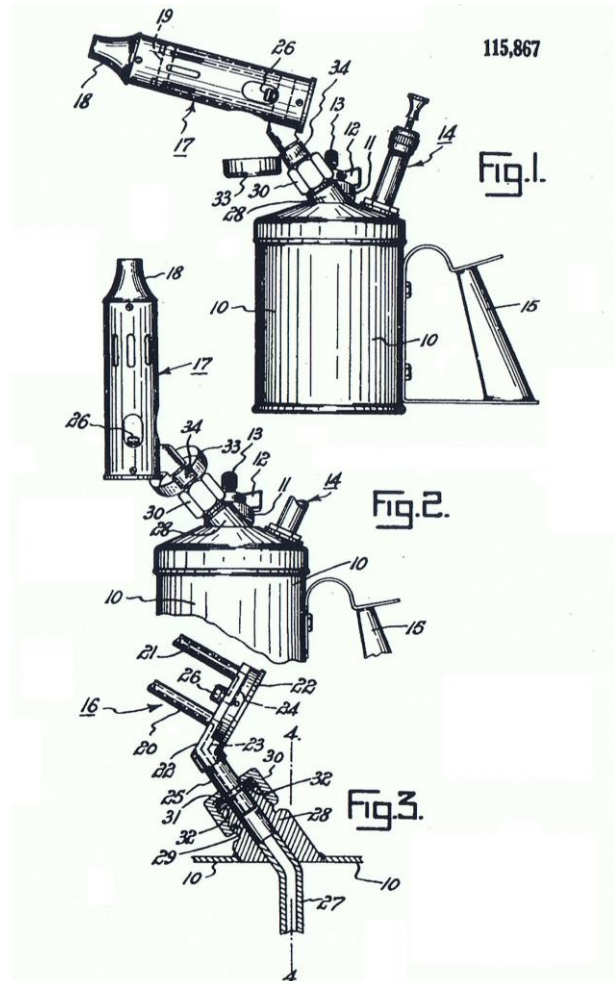
The introduction to Australian Patent 115,867 stated the purpose as.....
"The invention related to pressure fed vaporising blowlamps.....with the desire to make such lamps of more general application.....the invention enables the lamp to be used as a blowlamp or as a heating lamp or stove by the simple act of adjusting the burner...."

The novel feature was the swiveling adjustment of the burner, allowing it to operate in positions from vertical to at an angle. The patent describes the vaporising components of the burner and the unusual appearance of the blow lamp, without claiming them as patented.

The patent and attached drawing were followed very closely during early production of the one (1) pint and the two (2) pint models. As very little printed matter in the form of catalogues or brochures remain, most knowledge of the SPITFIRE blow lamp by Everyday Products Pty Ltd has been gained through observation of the blow lamps in the collection and by reference to older newspaper advertisements.

Adjustment of the burner through all angles up to the vertical position was simply achieved by loosening the union nut and swiveling the burner assembly to the desired angle before tightening the nut again.

The one piece burner end fitting (See Fig.3 patent drawing) was a complex brass casting requiring detailed drilling and machining in its fabrication. The geometry shown in this detail set the inclined angle of the burner at a steep 30 degrees to the horizontal. In part this gave the early 1 pint and 2 pint adjustable blow lamps their "unique" angular appearance.



**SWIVEL BURNER COUPLING,
 BURNER END CASTING
 AND PRIMING CUP**

The vaporising components of the burner were later changed to a more conventional curved tubular fabrication and together with revised geometry set the inclined angle of the burner at a normal 15 degrees to the horizontal.

The pleasing appearance of the burner assembly together with the sharp angles of the handle continued the "unique" appearance of the SPITFIRE blow lamp.



EARLY AND LATER VERSIONS OF THE VAPORISER ON A ONE-PINT (left) and TWO-PINT (right) "SPITFIRE" LAMP

Everyday Products also produced a 1 pint fixed inclined blow lamp of similar appearance to the adjustable SPITFIRE (with the same angular handle), however by the end of 1944 they adopted a new "Swedish styled" handle for this blow lamp.

The adjustable SPITFIRE blow lamp continued with the original angular handle design however they were only produced in small numbers during the next few years and very few have survived in collections.

During the war years the Company stayed loyal to their customers, especially mail order customers, and immediately the restrictions were eased they offered their new style blow lamp to farmers at 45/- each, limited numbers available "ORDER PROMPTLY" the advertisement read.



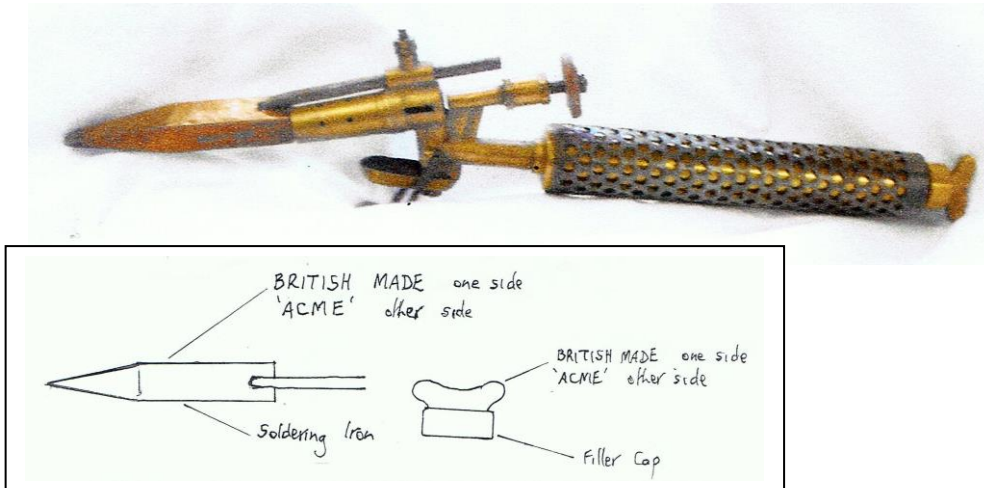
NEW STYLE "SPITFIRE" LAMP WITH ADVERT. FROM "THE LAND" (NSW 1911-1954) 27th October 1944

Should any member have Original Publications or further information about the EVERYDAY "SPITFIRE" blow lamps, please contact the EDITOR.

**BLOWLAMP SOCIETY MEMBER
More from Russell Harrower**

Photos from the 2016 Bedford rally (Old Warden air museum and college at Biggleswade) appeared in BN 97 from when Carolyn and Max Rhodes met Russell Harrower. Now more from Russell himself, who provided photos of some of his unusual blowlamps.

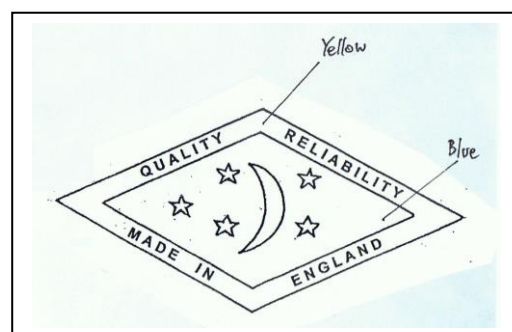
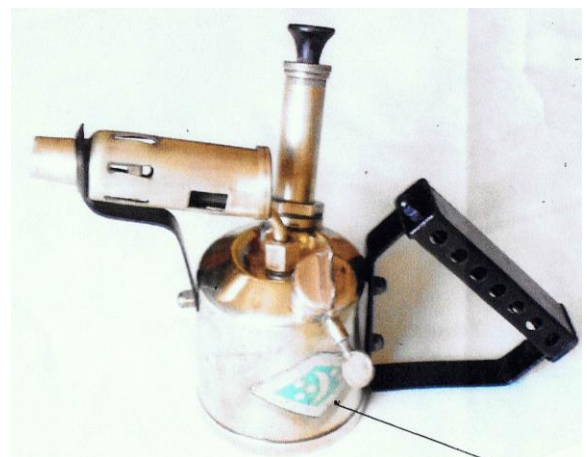
ACME SOLDERING IRON & BLOWTORCH COMBINED



In the TATHS (Tools and Trade History Society) records I found a JOHN BEDFORD & SONS "LION WORKS" Sheffield, manufacturers of cast steel of all shapes, edge tools, joiners tools and various other kinds of tools had ACME as one of their trademarks, the same size and lettering as on the blowtorch. Comments please?

SPECIAL DIAMOND TRANSFER

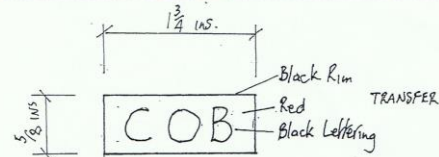
This is a ½ pint paraffin blowlamp with a diamond transfer with the inscription and logo as follows: "QUALITY, RELIABILITY. Made in England" around a perimeter of transfer, internally 3 stars, crescent moon, 2 stars and is identical to a Veritas ½ pint paraffin blowlamp in all aspects except for the transfer. Our founder, Les Adams, on a trip to Kent saw a ½ pint blowlamp with the above logo at a car boot sale. He did not buy it but made a metal note for including in the next issue of Blowlamp news. Also a friend of mine was at a car boot in Aldershot and saw a blowlamp with this logo and purchased it. As it was gathering dust in his shed some years later he passed it on to me, and it is now in my collection. Is it possible that the blowlamp Les saw and the one my friend purchased are one and the same or are there two in existence? Either way they are very rare and unique. Could this be a variation of a Veritas blowlamp? Comments please?



COB TRANSFER ON A BLOWLAMP

This blowlamp is exactly the same as an RM ½ pint paraffin blowlamp except for the transfer. Could this be a brand name of RM.

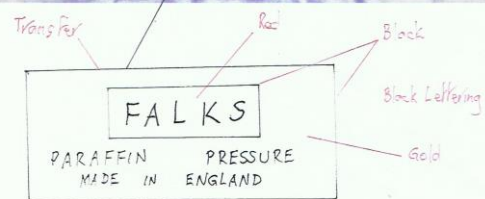
Comments please?



FALKS TRANSFER ON A BLOWLAMP

This blowlamp is exactly the same in all aspects as the Veritas 1 pint paraffin blowlamp except for the transfer. Is FALKS the parent company with Veritas a subsidiary, or is it a brand name used by FALKS?

Comments please?



SUNBEAM ¾ PINT PETROL BLOWLAMP

Three points to consider:

- a) A blowlamp for pre-heating fuel in the early Sunbeam cars.
- b) Very similar to a MARCO 1 pint Petrol Blowlamp
- c) On looking through my TATHS records I find Longden & Co. Sheffield used SUNBEAM as a brand name.

Comments please?

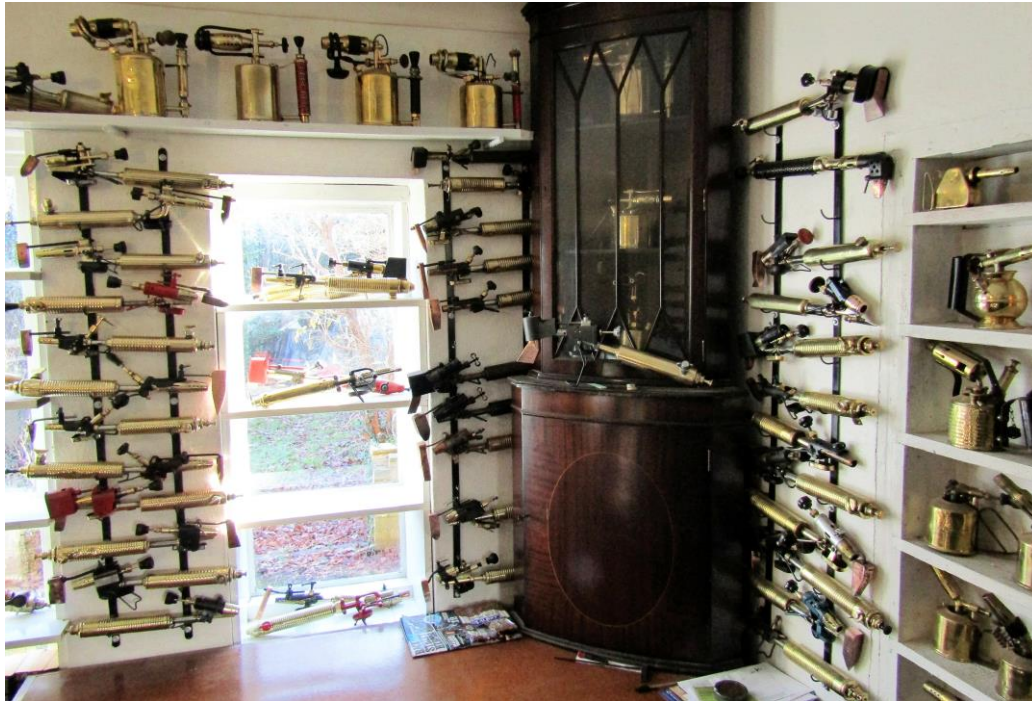


BLOWLAMP SOCIETY MEMBER

More from Clive Finch

We were introduced to Clive in the September 2015 issue of Blowlamp news BN92. A year later he emailed saying "Since joining the BL society 13 months ago I've so far collected 140 SHSIs; I've not taken pictures as yet but will pass them on once I start doing so."

Here are some of the photos that Clive has submitted. I'm always curious about how collectors display their blowlamps.....:





Marked
B.A.HJORTH & CO,
PATENT
STOCKHOLM
"AETNA"



Gas-operated SHSI's

Clive asks for help to identify these two self-heated soldering irons:



Does anyone recognize this SHSI model? Missing a pre-heating bowl.



Does anyone recognize this SHSI model? The pre-heating bowl slides out for filling, then back in sideways after lighting.

Clive contacted me earlier this year to ask for some help in acquiring some SHSIs. This is how it went, in his words:

“Whilst surfing around ebay mid-December last I came across a rare EMMELMANN SHSI. dated Sep 28th 1903. It was listed for a mere \$64.99 with no bids, 2 days till auction end, I rather fancied my chances to win it but as I always do before bidding for overseas ebay items I checked with the seller first only to be told they don't ship outside the States. Auction end came with no bids & a couple of days later it was re-listed @ \$49.99. I let it run for 3 or 4 days whilst thinking of ways & means of obtaining it for my collection, with 3 days till auctions end & still no bids I emailed your editor in San Diego & cheekily asked if I could get it sent to him & he to forward onwards to me in the UK, he (not very readily) agreed. I also asked if he had any SHSIs he was wanting to sell & he offered me an ATLAS for a very reasonable sum which I agreed to purchase. Auction end for the EMMELMANN comes along & I'm very surprised to be the only bidder on such an uncommon Lamp.”



The **EMMELMANN** after a bit of a cleanup.



The **ATLAS** after a cleanup,

Whilst the EMMELMANN was in the post I spotted an EVERHOT model 15 listed, on “buy it now” for a mere \$19.99 so I bought that as well.



EVERHOT Model 15

**WRIGHTS LYMM
From Ted Rawson**

"I thought maybe these pics of a complete Fireman lamp by Wrights of Lymm near Warrington might be of some interest for Blowlamp News. All came in the tin box. Interesting that one of the containers is labelled 1pt on the side and would appear to be the fuel can and the other one has a spout and a brass gauze filter. The heat (wind) shield is good and there is a spare parts leaflet and a packet of spare washers also labelled Fireman. The lamp needs a little TLC and has a Tilley knob instead of the wooden one.





**"THE FIREMAN"
WRIGHTS' LYMM**



**FUEL DISPENSER
WM. WRIGHT & SONS
LYMM NEAR WARRINGTON**



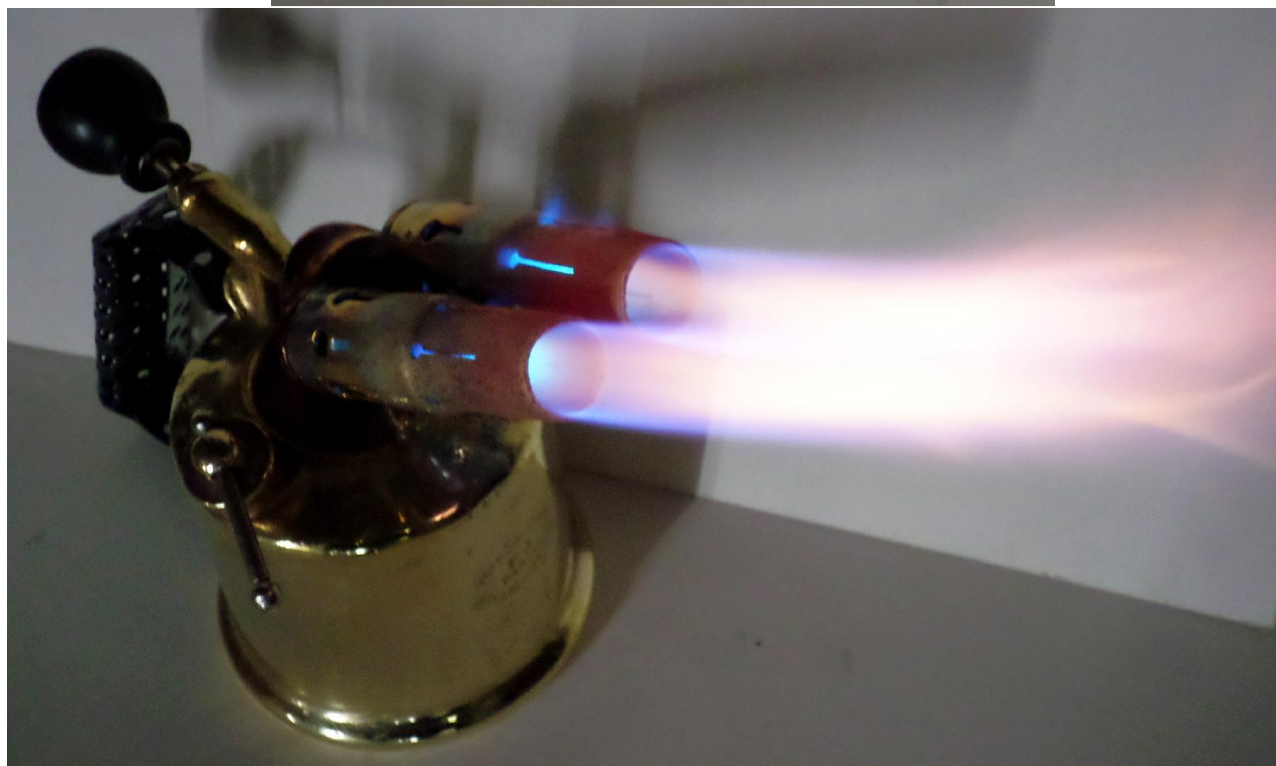
**WINDSHIELD MARKED
"TO SUIT THE GENUINE SIEVERT BLOWLAMPS TYPES D & A"
From WRIGHTS OF LYMM CATALOGUE "G" 1939**



WRIGHTS LYMM "FIREMAN" BLOWLAMP INSIDE THE WINDSHIELD

MORE FLAMES:

From member Patrice Faye two spectacular photos of a FOUILLOUD .. F.J. No. 3 two-burner lamp with flames!



SIEVERT VAPOURIA 17B: RESTORATION

Max Rhodes is asking for information for restoration of Sievert Vapouria 17B engine starter lamp.

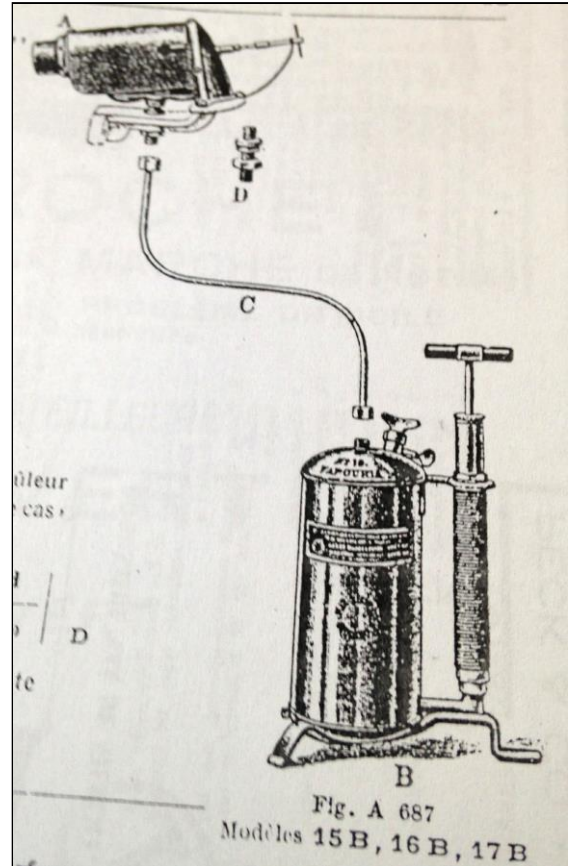
“I would like some help with any information on the Vapouria 17B. I have acquired from Brian Grainger’s collection the tank in the picture, of a Vapouria number 17 (actually a 17B).”

In this photo the Vapouria 17B at left is missing its' burner assembly, and also the pipe from the tank to the burner assembly.



VAPOURIA 17B

VAPOURIA 17



Above right is a catalog diagram of the 17B. This is the only reference I could find. It would be nice to know if anyone has a Vapouria 17B and could supply a picture, and dimensions to the length of pipe. Any information would be greatly appreciated.”

You will notice that the burner on the Vapouria 17 (at right) takes its' feed from the front of the tank, whereas the 17B takes a feed from the centre of the tank, and requires a piece of pipe (unknown length) to the burner.

“You may also notice that the Vapouria 17 has a different foot arrangement to the 3 foot arrangement of the 17B. On the 17B there are also holes in the feet so they could be bolted to an engine. I do know that the 17B was used for some sort of hot bulb engine. On the Vapouria 17, the burner has a really big bore to supply a lot of heat. I do not know if the 17B had the same size outlet of something similar to the Vapouria 15 or 16, or did it also have the big burner?”



VAPOURIA 17 FRONT-FEED



VAPOURIA 17B CENTRE-FEED



VAPOURIA 17 FEET



VAPOURIA 17B FEET

WANTED

Your contributions of photographs, information and articles for **BLOWLAMP NEWS** and for the **WEBSITE**. Submissions to: blowlampsociety@gmail.com or directly to gstubbs222@aol.com

SUBSCRIPTIONS

Annual subscriptions are: For UK members 15 UK pounds, for International members 25 pounds. You may pay by PayPal to Blowlampnews@hotmail.com Payments may also be made by post to: Carolyn Rhodes, Mathom House, 71 Ryecroft Road, Hemington, Derbys. DE74 2RE England.

INDEX to ISSUES 1-93 (1992 – 2015)

A cross-referenced index to **BLOWLAMP NEWS** is available from Keith Hawkins on request, with a contribution to cover the costs of printing and postage. (Also at www.blowlampsociety.com)

BLOWLAMP NEWS is published in March, June, September and December. Any items for inclusion should be with the editors at least four weeks before the issue date.

EDITORIAL CONTACTS:

Keith Hawkins, 28A Rectory Close, Carlton, Bedford, MK43 7JY Tel. 01234 720974
Graham Stubbs, 17715 St. Andrews Drive, Poway, CA 92064, USA gstubbs222@aol.com

Thanks go to Michel Cochard, Patrice Faye, Clive Finch, Russell Harrower, Arthur McNamara, Ted Rawson and Max Rhodes for their contributions to this issue.

COPYRIGHT MARCH 2017: No part of BLOWLAMP NEWS may be reproduced without the prior consent of THE BLOWLAMP SOCIETY