

BLOWLAMP NEWS

BN 91

JUNE

2015

The Newsletter of the Blowlamp Society – Founded by Les Adams, August 1992

LYSS



LYSS BLOWLAMPS & SHSI Photos by Gérard Muller



IN THIS ISSUE

**LYSS
SIEVERT
WRIGHTS OF LYMM
SIEVERT SERPENTINA**

**SIEVERT SBP
BREUZIN ALCOHOL LAMP
HENRI WOUTERS
ARNOLD of BERLIN**

LYSS

Many thanks to Gérard Muller for the photographs on our cover page.

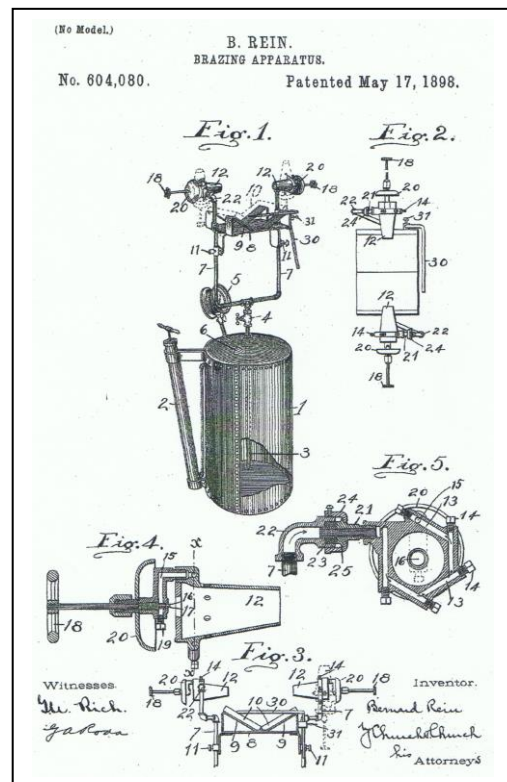
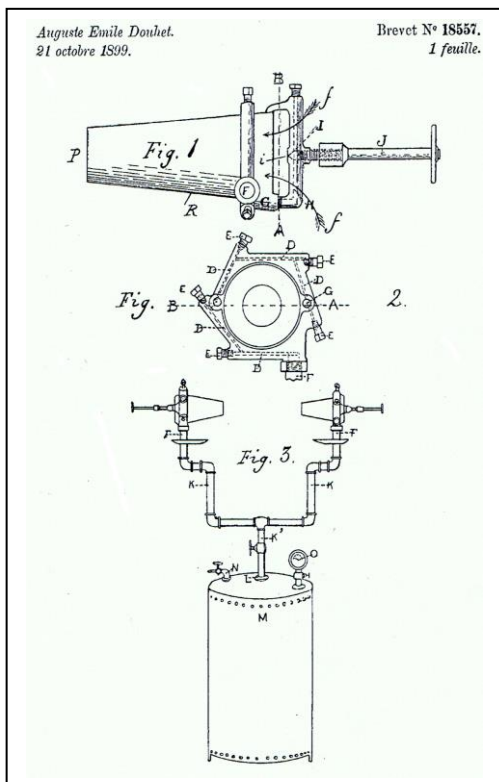
Until very recently very little was known by blowlamp collectors about this company which made a number of very fine lamps in the small town of Lyss, close to Bern, Switzerland..

Michel Duval provided me with a copy of this advertisement, dated 1904, which reveals the company's name to be "Fonderie & Robinetterie de Lyss" meaning Foundry and Faucet Company of Lyss.

The Swiss patent 18557 was issued in October 1899 to an inventor with the French-sounding name Auguste Emile Douhet, who was in fact an American, from Cleveland, Ohio.

His patent is for the burner shown in the illustration, "substantially as described in the patent specification." The drawing shows a vaporizing chamber which surrounds the cone-shaped burner. The vaporizer is formed by drilling several tangential holes, with their outer ends closed by plugs. This construction is seen in most of the lamps shown in the photographs.

The essential features of the burner shown in Douhet's Swiss patent are identical to those in an 1898 United States patent issued to Bernard Rein of Rochester, New York, which Rein assigned to a Rochester company, Red Cross Cement and Rubber Company (presumably in the bicycle tyre and supplies business). In August 1899, Douhet applied to the U.S. consulate in Bern to extend the stay of himself and his family in Switzerland by two years, presumably in relation to the patent application. Whether he was acting as an agent for the owners of the rights to the American invention, or whether the design for the Swiss patent was a knock-off is unknown.



MAX SIEVERT

In this issue BN 91 of *BLOWLAMP NEWS*, we begin a series of articles about the Swedish maker of blowlamps and related apparatus, **MAX SIEVERT**.

On page four is the first section of a table in three parts listing known model numbers of **SIEVERT** blowlamps etc. **SIEVERT** used a variety of model numbers, models and model names. This first section references lamps by model number. Future issue of *BLOWLAMP NEWS* will contain lists by model letters and by model names. Many thanks to Michel Duval for preparing these lists.

On page seven is an introduction to the **SIEVERT** SERPENTINA series of lamps.

At page nine is an explanation of the very unusual **SIEVERT** Model SVP lamp, with its automatic priming lamp shutoff.

The article on page 10 about the English distributor of painters' supplies includes two pages of catalogue illustrations of **SIEVERT** products sold by Wrights' of Lymm sold in the UK in the late 1930s.

Future issues of *BLOWLAMP NEWS* will feature more rare and unusual **SIEVERT** lamps.

Readers are encouraged to submit photographs of their own favorite **SIEVERT** lamps for inclusion in future issues of this newsletter.



SIEVERT MODEL NUMBERS

Model	Old #	Fuel	Pump	Capacity	Burner	Notes / Date
207	L	petrol	none	0.15 litre	horizontal	1961 / 1962
208		petrol	internal	0.15 litre	horizontal flattened	wind shield
209	A1	petrol	none	0.25 litre	horizontal	metal or plastic handle / 1961 / 1962
210		petrol	internal	0.25 litre	horizontal flattened	wind shield, folding handles /1962
215	S	petrol	none	0.40 litre	inclined	metal or plastic handle / 1962
216	SB	petrol	none	0.40 litre	inclined	metal-strapped, metal or plastic handle / 1962
217	R	petrol	none	0.40 litre	vertical	
220	A	petrol	none	0.40 litre	horizontal	plastic handle / 1961 / 1962
220 N		petrol	none	0.40 litre	horizontal	plastic handle, New model
221	APM	petrol	handle	0.40 litre	horizontal	1961 / 1962
221 N		petrol	handle	0.40 litre	horizontal	New model
222	APS	petrol	handle	0.40 litre	inclined	1961
223	APH	petrol	handle	0.50 litre	horizontal	1961 / 1962
223 N		petrol	handle	0.50 litre	horizontal	New model
250						(on "Directions for use")
251	G 6	petrol	handle	0.80 litre	Horiz. dia. 19 mm	1961 / 1962
251 N		petrol	handle	0.80 litre	horizontal	New model
251 T		petrol	handle	0.80 litre	Horiz. dia. 19 mm	with Quickstart / 1961 / 1962
252	G 61	petrol	handle	1 litre	Horiz. dia. 19 mm	1962
252 T		petrol	handle	1 litre	Horiz. dia. 19 mm	with Quickstart / 1962
257	G7	petrol	handle	1 litre	Horiz. dia. 27 mm	1961 / 1962
257 N		petrol	handle	1 litre	horizontal	New model
257 T		petrol	handle	1 litre	Horiz. dia. 27 mm	with Quickstart / 1961 / 1962
258		petrol	handle	1.6 litre	Horiz. dia. 27 mm	1961 / 1962
258 T		petrol	handle	1.6 litre	Horiz. dia. 27 mm	with Quickstart / 1961 / 1962
259	G72	petrol	handle	2 litres	Horiz. dia. 27 mm	1962
259 T		petrol	handle	2 litres	Horiz. dia. 27 mm	with Quickstart / 1962
263	G8	petrol	handle	2 litres	Horiz. dia. 34 mm	1961 / 1962
263 N		petrol	handle	2 litres	horizontal	New model
263 T		petrol	handle	2 litres	Horiz. dia. 34 mm	with Quickstart / 1961 / 1962
264	G83	petrol	handle	3 litres	Horiz. dia. 34 mm	1961 / 1962

Model	Old #	Fuel	Pump	Capacity	Burner	Notes / Date
264 N		petrol	handle	3 litres	horizontal	New model
264 T		petrol	handle	3 litres	Horiz. dia. 34 mm	with Quickstart / 1961 / 1962
268		petrol	handle	3 litres	Horiz dia. 42 mm	1962
268 T		petrol	handle	3 litres	Horiz.dia. 42 mm	with Quickstart / 1962
269		petrol	handle	4 litres	Horiz. dia. 42 mm	1962
269 T		petrol	handle	4 litres	Horiz. dia. 42 mm	with Quickstart / 1962
281	DMP	petrol	internal	0.17 litre		SHSI without wind shield
282		petrol	internal	0.22 litre		SHSI without wind shield
283		petrol	internal	0.22 litre		SHSI without wind shield
284	AKP 2	petrol	internal	0.22 litre		SHSI with wind shield
288		petrol	internal	0.22 litre		SHSI with wind shield and paint scraping
291		petrol	internal	0.17 litre	strongly reinforced	SHSI without wind shield / 1962
292		petrol	internal	0.22 litre	strongly reinforced	SHSI without wind shield / 1962
293		petrol	internal	0.22 litre	strongly reinforced	SHSI without wind shield / 1962
294	AKP 2	petrol	internal	0.22 litre	strongly reinforced	SHSI with wind shield / 1961 / 1962
294 N		petrol	internal	0.22 litre		SHSI New model, with wind shield
295		petrol	internal	0.22 litre	strongly reinforced	SHSI with wind shield and pointed copper bit / 1962
298						SHSI (only on "Directions for use")
538		paraffin	internal	0.33 litre	inclined	1961 /1962
540		paraffin	internal	0.40 litre	inclined	metal or plastic handle / 1961 / 1962
540 N		paraffin	internal	0.40 litre	inclined	New model, plastic handle
541		paraffin	internal	0.40 litre	inclined	folding handles / 1962
542		paraffin	internal	0.50 litre	inclined	metal or plastic handle / 1962
542 N		paraffin	internal	0.50 litre	inclined	New model, "opened" handle
543		paraffin	internal	1 litre	inclined	metal or plastic handle / 1962
543 N		paraffin	internal	1 litre	inclined	New model, "opened" handle
544		paraffin	internal	0.50 litre	vertical	
545		paraffin	internal	1 litre	vertical	
546		paraffin	internal	0.50 litre	horizontal	

Model	Old #	Fuel	Pump	Capacity	Burner	Notes / Date
547		paraffin	internal	1 litre	horizontal	
555	Vapouria 11	paraffin	handle	0.40 litre	inclined	strap and butt holder / 1961
556	Vapouria 12	paraffin	handle	0.50 litre	inclined	strap and butt holder / 1961
561	Saturnus 1	paraffin	internal	3/4 pint	inclined	wooden or plastic handle / 1961
562	Saturnus 2	paraffin	internal	1 pint	inclined	wooden or plastic handle / 1961
569		paraffin	handle	0.80 litre	horizontal	1962
569 T		paraffin	handle	0.80 litre	horizontal	with Quickstart / 1962
570		paraffin	handle	0.80 litre	horizontal	steel hoop at the base / 1962
570 T		paraffin	handle	0.80 litre	horizontal	steel hoop at the base, with Quickstart / 1962
571		paraffin	handle	1 litre	horizontal	1962
571 N		paraffin	handle	1 litre	horizontal	New model
571 T		paraffin	handle	1 litre	horizontal	with Quickstart / 1962
572		paraffin	handle	1 litre	horizontal	steel hoop at the base / 1962
572 T		paraffin	handle	1 litre	horizontal	steel hoop at the base, with Quickstart / 1962
573		paraffin	handle	1.6 litre	horizontal	1962
573 T		paraffin	handle	1.6 litre	horizontal	with Quickstart / 1962
574		paraffin	handle	1.6 litre	horizontal	steel hoop at the base / 1962
574 T		paraffin	handle	1.6 litre	horizontal	steel hoop at the base, with Quickstart / 1962
575		paraffin	handle	2 litres	horizontal	1962
575 N		paraffin	handle	2 litres	horizontal	New model
575 T		paraffin	handle	2 litres	horizontal	with Quickstart / 1962
576		paraffin	handle	2 litres	horizontal	1962
576 T		paraffin	handle	2 litres	horizontal	with Quickstart / 1962
577		paraffin	handle	3 litres	horizontal	1962
577 N		paraffin	handle	3 litres	horizontal	New model
577 T		paraffin	handle	3 litres	horizontal	with Quickstart / 1962
579		paraffin	handle	4 litres	horizontal	1962
579 T		paraffin	handle	4 litres	horizontal	with Quickstart / 1962

SIEVERT SERPENTINA

Gérard Muller provided this photograph of a SIEVERT SERPENTINA Model 0, in excellent condition. He reports that he also has models 1 and 2.

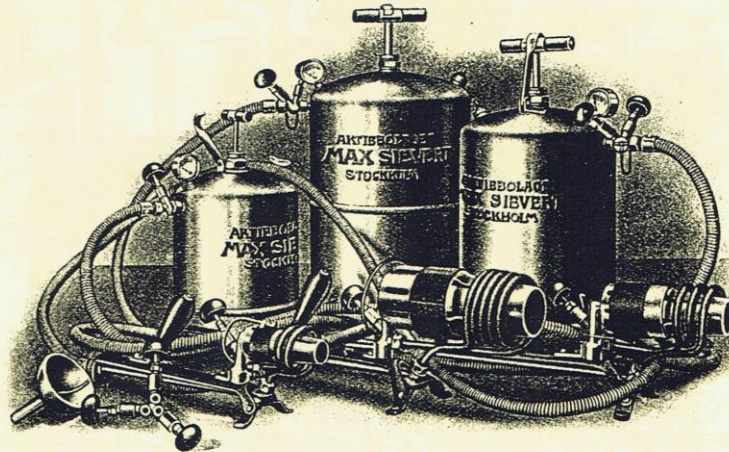
Sievert offered SERPENTINA lamps for both petrol (benzin) fuel and paraffin (petroleum – yes, it's confusing!). See catalogue descriptions and tables on the next page. The galvanized steel fuel canister sizes ranged from 6 to 18 litres.

Burner nozzles were adapted from hand-held blowlamps, and the tables identify which.



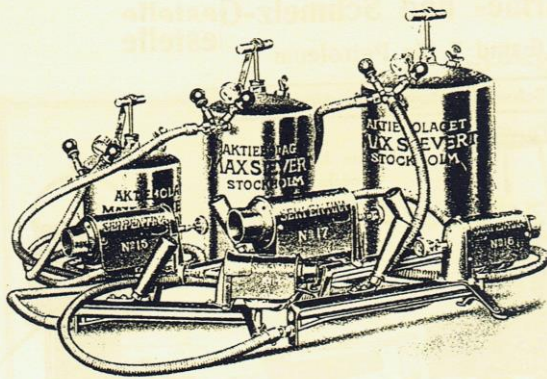
SIEVERT SERPENTINA No.0 Photo Gérard Muller

SIEVERT SERPENTINA (continued)



Sievert'sche Benzin-Gebläse SERPENTINA No. 0, 1, 2 und 3
mit in- und auswendig stark galvanisiertem Stahl-Behälter

MODELL:	Serpentina No. 0	Serpentina No. 1	Serpentina No. 2	Serpentina No. 3
Telegrammwort:	LABINOSERP	LACERSERP	LANCESERP	MAGNASERP
Behälter: Inhalt.....	ca. 6 Liter	ca. 6 Liter	ca. 12 Liter	ca. 18 Liter
Anzahl Schlauchstützen	1	1	2	2
Gewicht, leer, netto	ca. 5 1/2 kg.	ca. 5 1/2 kg.	ca. 6 3/4 kg.	ca. 7 3/4 kg.
Brenner: derselbe wie bei Lampe	HLL	HSL No. 1	HSL No. 2	HSL No. 3
vergl. Seite.....	7	8/9	8/9	8/9
Gewicht netto.....	ca. 1 1/2 kg.	ca. 2 1/4 kg.	ca. 3 1/2 kg.	ca. 4.— kg.
Schlauch: Länge	3.— m.	3.— m.	3.— m.	3.— m.
Gewicht netto.....	ca. 1 1/2 kg.	ca. 1 1/2 kg.	ca. 1 1/2 kg.	ca. 2 1/4 kg.
Gewicht des kompletten Apparates	brutto	ca. 19.— kg.	ca. 21.— kg.	ca. 28.— kg.
	netto	ca. 8 1/2 kg.	ca. 9 1/4 kg.	ca. 11 3/4 kg.



Sievert'sche Petroleum-Gebläse SERPENTINA No. 114, 15, 16 & 17

mit in- und auswendig stark galvanisiertem
Stahlblech-Behälter

Nur dieser Stempel



bürgt für die Echtheit

MODELL:	Serpentina No. 114	Serpentina No. 15	Serpentina No. 16	Serpentina No. 17
Telegrammwort:	FORTENSERP	FEMTONSERP	SEXTONSERP	SUTTONSERP
Behälter: Inhalt	6	6	12	18
Anzahl Schlauchstützen	1	1	2	2
Brenner: der Vapouria No. siehe Seite	114	15	16	17
Länge à m.	16/17	16/17	16/17	16/17
Gewicht: kompl. /brutto kg.	3	3	3	3
netto	19.—	21.—	28.—	38.—
Preis des kompl. Apparates	8.—	9.—	12.—	15.—

Brenner und Behälter können beliebig vertauscht werden. Bei der Bestellung ist in diesen Fällen die Literzahl anzugeben, z. B. »Serpentina No. 15 mit 18 Ltr.«

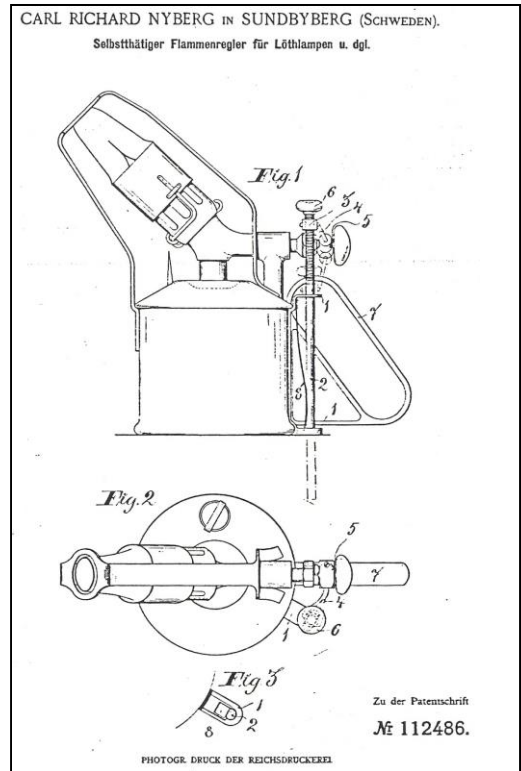
Zum Brenner der Serpentina No. 17 darf nur der dazu gehörige Schlauch verwendet werden, da die Schläuche der Serpentina No. 114, 15 & 16 für diesen Brenner zu eng sind.

SIEVERT SBP

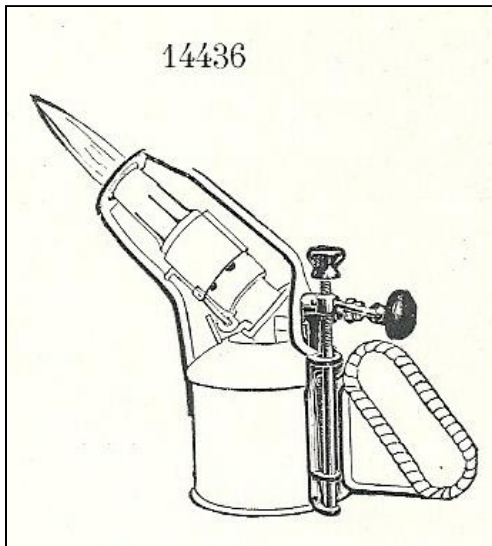
This Sievert SBP, owned by Jean-Yves LeCam is one of the more unusual blowlamps, invented by C.R. Nyberg in 1899.



"14436 Blowlamp with a system for dimming (pilot light) just by virtue of (just by the act of) putting the blowlamp on a table or any plane surface."



Michel Duval provided this explanation: "Referring to the photo at right, you can easily understand the principle of operation. First, you have to set the pilot light with the vertical knob. Then, you increase the flame with the control knob counterclockwise when you use the lamp. Consequently the vertical rod comes down through the lower hole. When you are done working, you put the lamp on a table and the hemispherical end of the vertical rod moves upward... So the initial setting of the pilot light is automatically OK."



WRIGHTS' OF LYMM

By Graham Stubbs

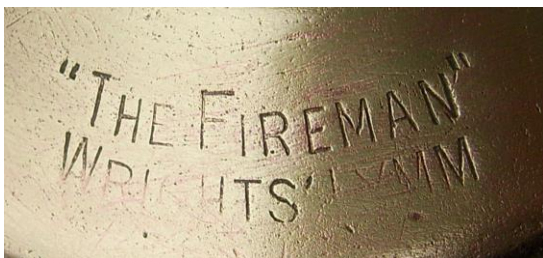
The company name Wrights' of Lymm is known to collectors of blowlamps primarily through the existence of THE FIREMAN and THE FIREFLY blowlamps in the photographs at the bottom of this page.

The history of the company goes back to 1840 when a William Wright commenced gold beating on his own account in the City of London. At this time the majority of the larger towns and cities numbered at least one gold beater among their many craftsmen. Somewhere around 1870 the business was transferred to premises in Manchester. Here the work was carried out in a cellar and passers-by were able to watch the activity through a grille in the pavement.

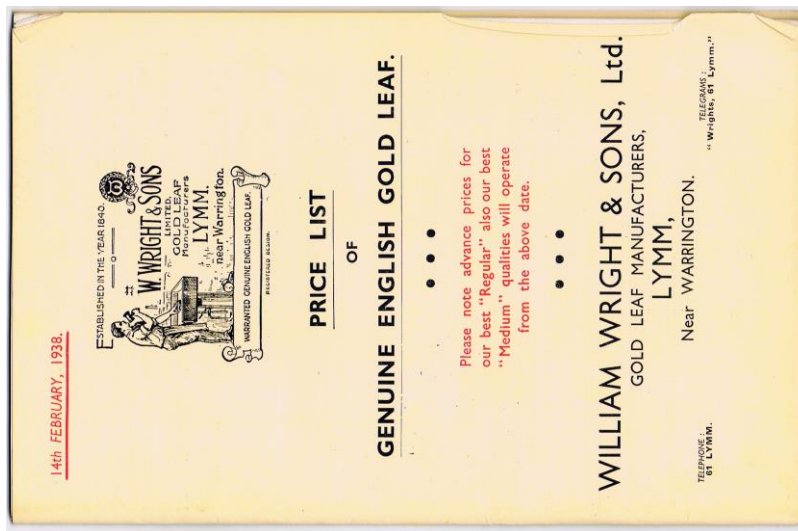
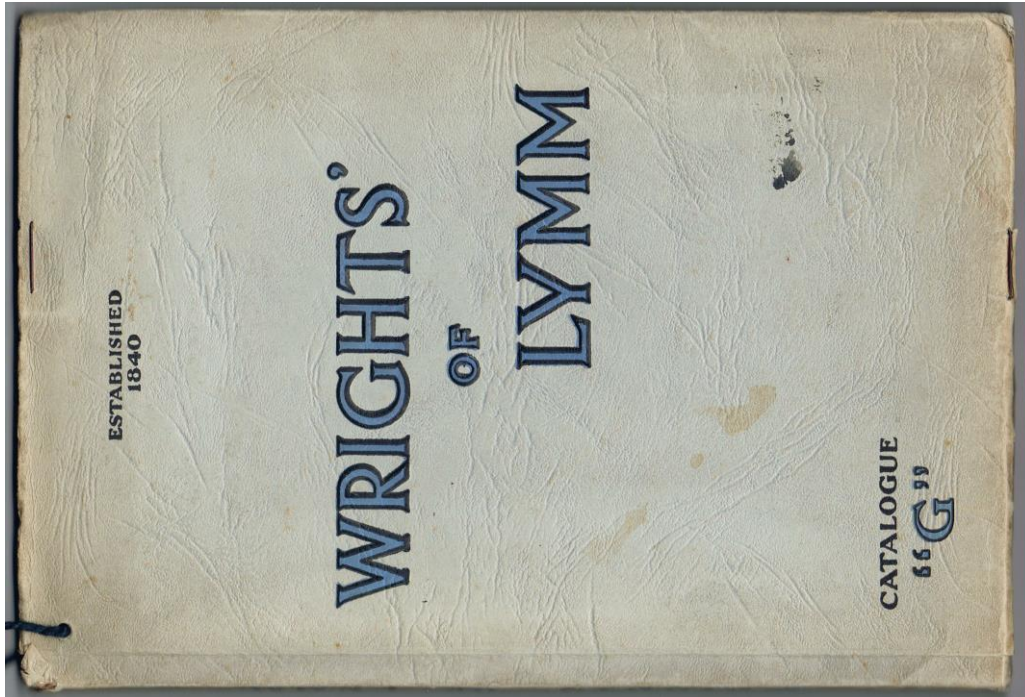
Wrights relocated to the village of Lymm and decided to employ girls and young women to carry out lighter work of cutting, transferring and packing the Gold Leaf, the strenuous gold beating was carried out by men.

A few years after 1914-1918 War, they began to sell various sign writing brushes in addition to gilding accessories and other decorator's requisites. Wrights' of Lymm became a household name in the decorating, signwriting and monumental trades following this diversification of product. By the 1920s, the company was the supplier of a broad range of high quality supplies for painters and decorators, producing a bound catalogue with more than eighty pages of supplies.

My best guess is that during the 1920s the company decided to include burning-off blowlamps in its catalog, and probably contracted with Bladon to produce the FIREMAN (without pump) and FIREFLY (with pump) lamps.



WRIGHTS' OF LYMM (continued)



By the year 1938, Wright's had evidently changed the source of blowlamps to the Swedish company, Max Sievert. See the catalog illustrations on the next page.

WILLIAM WRIGHT & SONS LTD., LYMM, NEAR WARRINGTON.				
3111 Sievert Standard Blow Lamps for Petrol :—				
Type	"A"	"APH"	"S"	"D"
Each	17/6	22/6	19/9	20/9
3121 Wind Shields	Each	4/3		
3123 Sievert Standard Blow Lamps for Paraffin :—				
Type	Vapouria No. 11	No. 12	Saturnus No. 1	No. 2
Each	24/-	28/-	15/6	17/6

WRIGHTS' OF LYMM (continued)

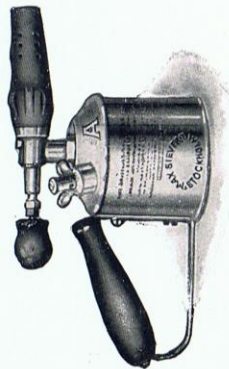
WILLIAM WRIGHT & SONS, LTD., LYMM, NR. WARRINGTON

THE GENUINE SIEVERT STANDARD BLOW LAMPS

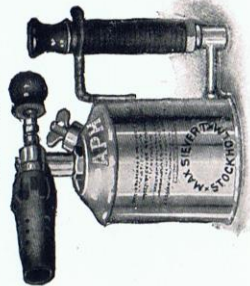
No. 3111.
The high standard of superiority which has always been characteristic of the GENUINE SIEVERT is to-day more than maintained. This, in particular, refers to the Types here illustrated.

MODIFIED TYPES FOR PETROL.

Type "A."



Type "APH."



Type	...	"A"	...	"APH"
Capacity	...	$\frac{3}{4}$ pint	...	1 pint
Burner	...	Horizontal	...	Horizontal

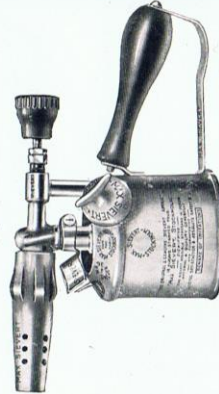
Fitted with patent self-cleaning device.

STANDARD TYPES FOR PETROL.

Type "S."



Type "D."



Type	...	"S"	...	"D"
Capacity	...	$\frac{3}{4}$ pint	...	$\frac{3}{4}$ pint
Burner	...	Inclined	...	Horizontal

As the model of imitations they stand PRE-EMINENT combining exceptional strength with an absolute assurance of never-failing efficiency—qualities which account for their universal acceptance as the STANDARD MAKE.

One complete set of Spares—not cleaning pins only—with each Lamp.



No. 3121.

Wind Shield, asbestos lined.
Suitable for Blow Lamps without pumps.

THE GENUINE SIEVERT STANDARD BLOW LAMPS

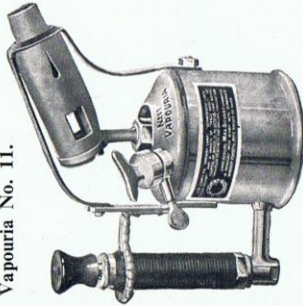
(Made in Sweden.)

No. 3123.

The Paraffin Lamps here shown stand absolutely at par with the unique range of Petrol types on previous page. Designed upon scientific principles, the production embraces the finest materials, highest expert workmanship, and best possible finish.

STANDARD TYPES FOR PARAFFIN.

Vapouria No. 11.



Vapouria No. 12.



VAPOURIA No.	...	11	...	12
Capacity	...	$\frac{3}{4}$ pint	...	1 pint
Burner	...	Inclined	...	Inclined

MODIFIED TYPES FOR PARAFFIN.

Saturnus No. 1.



Saturnus No. 2.



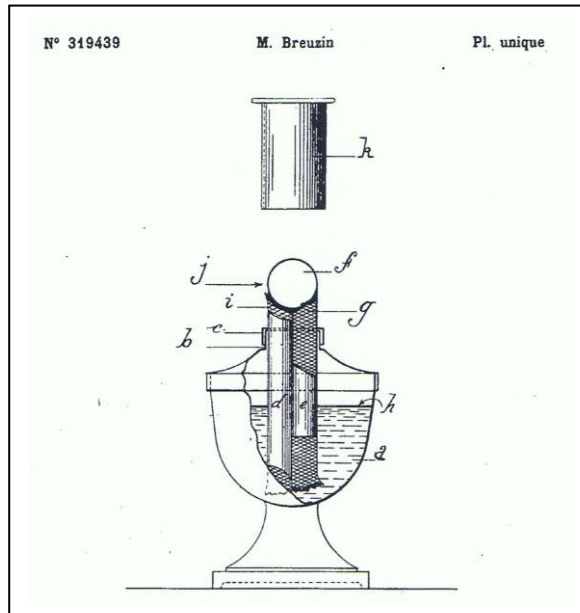
SATURNUS No.	...	1	...	2
Capacity	...	$\frac{3}{4}$ pint	...	1 pint
Burner	...	Inclined	...	Inclined

Unexcelled, they also ensure entire freedom from vexatious minor troubles.
One complete Set of Spares—not cleaning pins only—with each Lamp.

BREUZIN PATENTED 1902 ALCOHOL LAMP

Michel Duval provided photographs and documentation of this beautiful 10 cm. tall spirit lamp used by watchmakers and jewelers. The patent is dated 1902.

The name "Breuzin" is frequently seen on self-acting lamps of the two-boiler variety



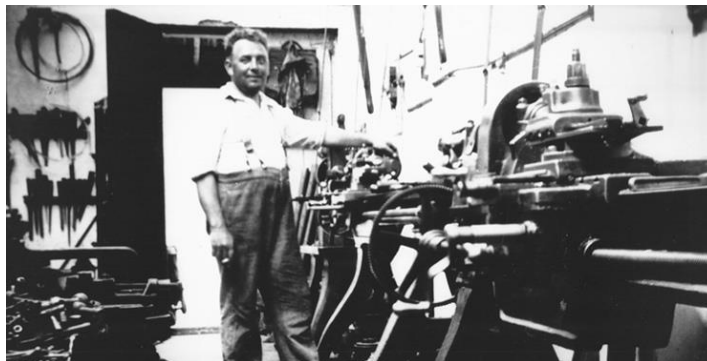
HENRI WOUTERS

New member Ole Falk Madsen requested information about this SHSI marked solely with the identifying letter "HW".



Michel Duval provided this background:

In 1926, Henri Wouters, seen below in his workshop established the "Ateliers Wouters" (Wouters Workshops) in Thimister-Clermont, Belgium. He worked alone and manufactured industrial parts in subcontracting. The company grew and diversified under the direction of his son and grandson, eventually merging with another company eventually to become "Wouters-Tecnolub"..



Welcome to new member **Ole Falk Madsen**, of Denmark, who says about himself'

I used the blowlamps at my work as a painter in the beginning of 1960 and in the early 1990s I started looking for them at markets around Denmark. Since that time my interest has accelerated and my collection consists of more than 800 blowlamps today

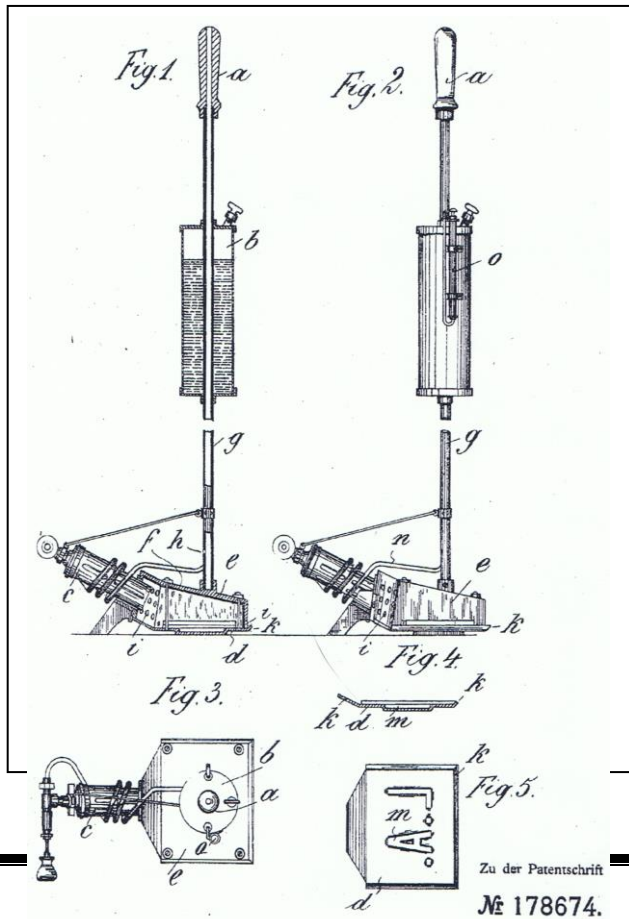


ARNOLD OF BERLIN

Gérard Muller provided photos of this unusual German lamp, with a nameplate that includes a patent number and then name L. Arnold, Berlin.



The German patent, issued in 1906 to Louis and Otto Arnold of Berlin, is for a self-heated branding iron, intended for marking wooden objects such as crates. The patent claims are specific to its purpose for branding, and don't seem to relate to the general-purpose blowlamp shown in the photographs. However, it was not unusual for an inventor or patents rights owner to apply a patent number label devices other than those directly related to the patent itself. Ownership of any patent conveyed a certain degree of prestige and authority.



Has anyone seen other devices with this mark?

WANTED

I am looking to buy for a display some Barthel 901 "Little Wonder" lamps - the small triangular ones, and also some Lamb No 1 lamps made by J Shaw

I would also be interested in reading an article on these small lamps and what they were used for.

Thanks, Max Lewis, The Homestead, Upper Cumberland Walk, Tunbridge Wells, Kent TN2 5EH

max.lewis@btopenworld.com 01892 532122/ 07790220546

CORRECTION BN 90

Thank you to Patrice Faye, who pointed out two errors in the captions to the photos in the article **MORE FLAMES**.

On page 3, "LONGUEMARE" should read "PAQUELIN"

On pages 3 And 4, "FOILLARD" should read "FOUILLOUD".

NEXT ISSUE

More Wright's of Lymm

More Sievert

Keith Hawkins on small SHSIs

Your contributions of stories from steam fairs, unusual lamps, and photos of collections

INDEX to ISSUES 1-88 (1992 – 2014)

A cross-referenced index to all issues of **BLOWLAMP NEWS** is available from Keith Hawkins on request, with a contribution to cover the costs of printing and postage.

BLOWLAMP NEWS is published in March, June, September and December. Any items for inclusion should be with the editors at least four weeks before the issue date.

SUBSCRIPTIONS: UK 15 UK pounds, International 25 UK pounds

By PayPal to Blowlampnews@hotmail.com Alternatively payments may be made by post to: Carolyn Rhodes, Mathom House, 71 Ryecroft Road, Hemington, Derbys. DE74 2RE England

EDITORIAL CONTACTS:

Keith Hawkins, 28A Rectory Close, Carlton, Bedford, MK43 7JY

Tel. 01234 720974

Graham Stubbs, 17715 St. Andrews Drive, Poway, CA 92064, USA

gstubbs222@aol.com

Thanks go to

Patrice Faye, Keith Hawkins, Jean-Yves LeCam, Gérard Muller, Michel Duval, and Ole Falk

Madsen for contributions to this issue of **BLOWLAMP NEWS**.

COPYRIGHT JUNE 2015

No part of BLOWLAMP NEWS may be reproduced without the consent of THE BLOWLAMP SOCIETY
