

BLOWLAMP NEWS

BN 89

DECEMBER

2014

The Newsletter of the Blowlamp Society – Founded by Les Adams, August 1992

SUBSCRIPTION DUES

Enclosed in this issue is a subscription renewal form. Postal costs have caused us to raise subscription prices for the first time in several years. Annual subscriptions are 15 UK pounds for UK members and 25 UK pounds for the rest of the world. For your convenience, payment may now be made through Paypal to:

Blowlampnews@hotmail.com

As an alternative to Paypal, payments will be accepted in (paper) cash or by cheque, payable to The Blowlamp Society (see back page for new address.) Your payment must be received before February 28th, 2015; the next issue of *BLOWLAMP NEWS* will be posted next March only to paid-up members.



TODDINGTON MEETING 25th, October 2014

IN THIS ISSUE

**TODDINGTON MEETING, REPORT
WILFIN: A "NEW" BRAND NAME
MOX: MORE PICTURES
SOLDERING COFFINS**

**MORE FLAMES
PAQUELIN
FOR FUN: FIGURINES
ENGINE STARTER LAMPS**

REPORT: THE TODDINGTON MEETING 2014

By Graham Stubbs

It had been two years since the last meeting, and thirteen members of the blowlamp Society were present to display, swap and or sell lamps. It was once again a great opportunity to renew friendships and to make new acquaintanceships. Spouses and friends were present for support and to help set and take down displays.

A big "Thank-you" to Keith Hawkins for recruiting the participation to make this a worthwhile meeting. I'm always up for the opportunity to travel and meet my collector friends "across the pond". However, if we're to do this again, we need a better indication of a good future turnout!

As you will see in the following, once again there were examples from some very fine blowlamp collections! Responsibility for the accuracy of the captions rests solely with the editor!



**KEITH HAWKINS DISPLAY TABLE
WITH THE BLOWLAMP SOCIETY LOGO**



**KEITH HAWKINS
SET OF 3 BARTHEL SPIRIT LAMPS:
"FUCHSIT", "GRANAT" & "HELVIN"**



**KEITH HAWKINS
BARTHEL
"HELVIN" .07 LITRE LAMP
WITH FILLER THAT DOUBLES
AS A DRIP CUP**



New member Phil Harris
Phil (thinking) "Are these really all blowlamps?"



**John Tingle, Marnik Van Insberghe,
Phil Harris & Dave Nichols**
Marnik "John, let's show Phil how a deal is done"
Dave "I don't believe it!"



Phil Harris, Barry Cook and Dave Nichols
Phil (thinking) "Can it really be worth the five hundred pounds that Barry is saying?"
Dave "I don't believe it!"



**Barry Cook, Trevor Bold, Dave Thomas,
Keith Hawkins, Max Rhodes and Ray Everett**
Max "I'll trade this one for everything on the table"



Ken Longden, Max Rhodes and Dave Thomas.
Max "Did John Tingle really ask these two likely lads to watch his table?"



**Tony Smith, Keith Hawkins,
Ben & Sarah Welham**

Tony "I came all the way North from Hampshire for Wensleydale cheese.

Keith "But this is Bedfordshire..."



Tony Smith and Dave Thomas

Tony "Dave, they didn't have Wensleydale last time either"

Dave "I need to take a break"



Ben Welham and Barry Cook

Ben "Barry, where exactly does it say 'original Nyquist lamp?'"



Dave Thomas

Dave "It's been a really hectic morning!"



Katy and son Sjobbe Van Insberghe

Katy and Sjobbe looking after Marnik's treasures.



Monica, Sarah, Stephanie, Sheila, Carolyn & Barbara
These ladies decline to reveal why they're smiling or what they've been discussing

MAX RHODES' DISPLAY



**Max Rhodes
Three French F.J. Vestas – C, B, and A,
Shown with Keith Hawkin's F.J. Model D**



**The Four French F.J. Vestas together
– D, C, B & A**



**Max Rhodes and Keith Hawkins
Two of the most sought-after lamps --
Sievert six-litre HSL4 and F.J. Vesta five-litre D**

JOHN TINGLE'S DISPLAY

Can you help identify these lamps from John Tingle's immaculate display



German, similar to American Vulcan (see marking at right)



Double pistols mark



German, similar to American Vulcan, but larger



German, similar to American Vulcan, marked Patent 12000



German, unmarked, similar to Barthel "Granat"



From Argentina



An Engineering Exercise?



An Engineering Exercise?



"MURPHY PATENT" Australian?



Bladon



German, marked Junkers, Dessau



Paquelin

WILFIN

Max Rhodes brought to the Toddington meeting one of two lamps recently added to his collection, marked "WILFIN", in a stylized logo in a circle.

On-line searching revealed a company in Newcastle-upon-Tyne selling lathes under the WILFIN brand name. They appeared in Kelley's Directory from the mid 1920s to the mid 1970s and were variously described as 'Tool Dealers', 'Machine Tool Dealers' and 'Machine Tool Specialists'.

William Findlay & Son were best known for lathes; they also imported and sold tools under their own brand WILFIN, a the combination of letter's from the owner's fist and last names.

The clincher in identification was a site specializing in metal lathes, www.lathes.co.uk/wilfin/ with a photograph of the WILFIN logo embossed on a lathe stand.

The WILFIN lamps bear a strong resemblance to lamps made by Optimus and Three Crowns (see next page). It appears that William Findlay sourced the lamps from Optimus and had the WILFIN label stamped specially.





JUST FOR FUN: FIGURINES

By Michel Duval

I like all kinds of stuff relative to blowlamps such as these figurines. I am not a serious collector...

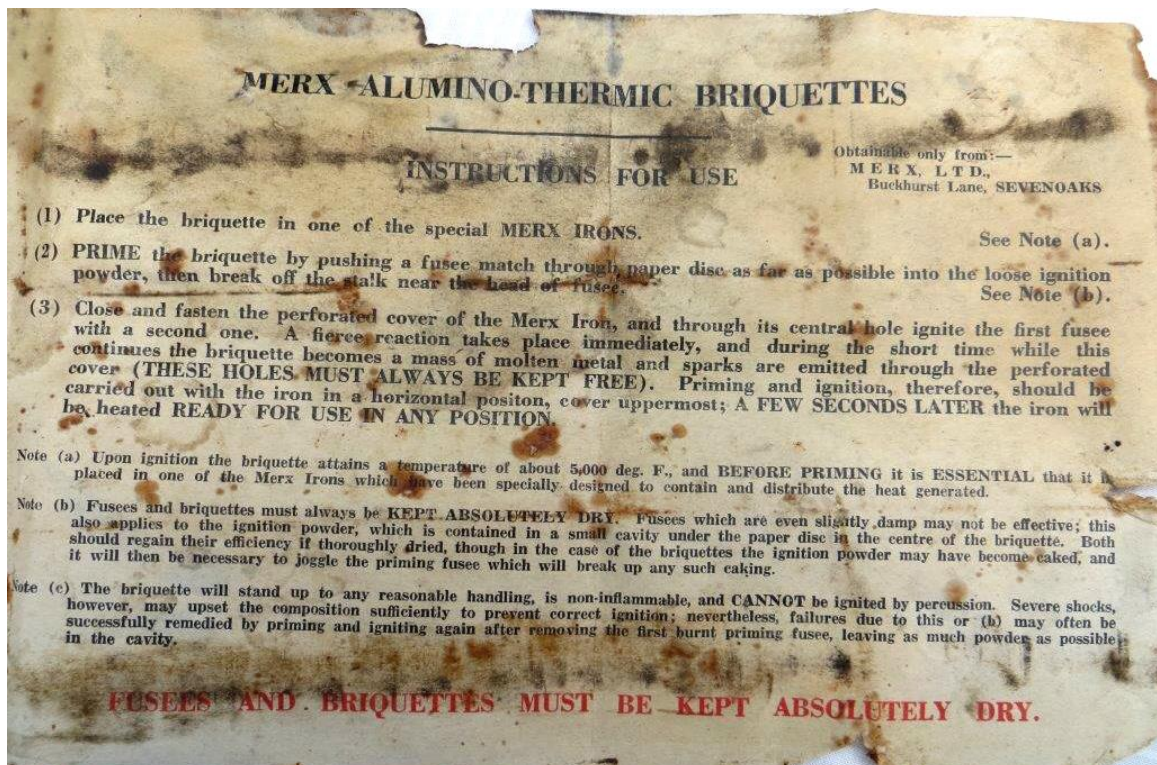


From right to left:

- Here is a porcelain American plumber, maybe "Made in Taiwan"... He is very smart with his immaculate work dress. Do you know the make of his blowlamp?
- "Desperate Dan" was created in England in 1937. A strapping cowboy, a hard nut to crack, he needs a blowlamp to shave his beard!
- These next two plumbers are hard at work, sometimes with a blowlamp! Made by French artisans in Provence.
- "Robecca Steam" comes from USA, she is the daughter of a Mad Scientist and she likes odd jobs. She can solder, with her blowlamp and dark glasses.
- "Gaston Lagaffe", a character of a Belgian comic strip, born in 1957, a good year... He made this giant paper clip -totally crazy and useless!- with his blowlamp.
- And last is a wooden plumber made in Germany, very likeable with his big moustache, his pipe, and his nice blowlamp, of course...

MORE ABOUT MOX

From Ted Rawson comes this picture of a MOX outfit, distributed by MERX Ltd. of Sevenoaks, Kent, complete with instructions, MOX capsules and the "Fusee" matches.





PACQUELIN

Also from Ted Rawson:

"Here are photos of an old French blowlamp dated 1888. I have wanted one of these for many years but the prices were always too high. I found this one at Swinderby antique Fair at a bargain price. It needed a little persuasion before it lit but it eventually got going and you can see the result. It is inscribed *MONOPLÉ CEDE pour L'ANGLETERRE* (exclusive rights for England) a *M.M.CROWTHER & GARROD de LONDON*. Dr. Paquelin was awarded a USA patent in May 1888; it is also stamped *WITH IMPROVEMENTS 1897*. It has a big dent in the tank but I think this adds to its provenance. "



MORE FLAMES

From Phil Harris, here are more blowlamps doing what they're supposed to do!



**PARASENE 1/2 PINT PARAFFIN LAMPS
USED & NEW
LIT UP AT RIGHT**



**PRIMUS 632 PARAFFIN LAMP
& IT'S COUSIN SIEVERT 542N
PRIMUS 632 - LIT UP AT RIGHT**



**VALTOCK MAJOR METH. LAMP
LIT UP AT RIGHT**





SIEVERT 223N 0.5 LITRE PETROL LAMP

This Sievert 223N is a relatively late model with three features of interest. Its predecessor, Sievert Model APH, has a fluted brass cylinder around the pump; the 223N uses a soft plastic material. The nozzle is new compared with the APH; the soldering iron holder is retained by the nozzle.

NOTE: THE BLOWLAMP SOCIETY DOES NOT ADVOCATE LIGHTING UP BLOWLAMPS UNLESS YOU REALLY KNOW WHAT YOU'RE DOING!

That said, does anyone else have photos of blowlamps doing what they do best, making noise and flames?

SOLDERING LEAD COFFINS

Bob Prichard supplied these photos of his Burrige lamp with the attachment for soldering coffins. It's an early version, with the soldered-wire safety pressure relief.

In 1899, Joseph Adams, of Birmingham, a "funeral furnisher" And George Alfred Burrige, mechanic, were awarded Patent Number 2105 for "An Improved Appliance for Use in Soldering". Adams and Burrige described their invention as "extremely useful owing to its portability, smallness in size, and ease of handling, and is of distinct advantage in the funeral undertaking business for soldering metallic shells of coffins, especially having regard to the fact that the lids of the same require to be soldered on at the home of the friends of the departed."



BURRIDGE LAMP WITH COFFIN-SOLDERING ATTACHMENT

In his 1903 book "Lectures to Plumbers", the author J. Wright Clarke of the Regent Street Polytechnic in London included a chapter on Lead Coffins.

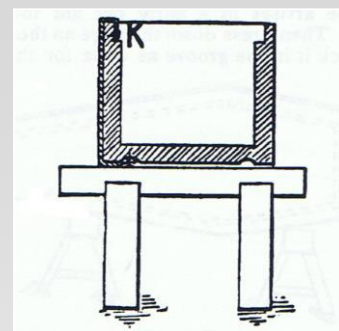
Evidently plumbers, skilled in working with lead, were called upon to provide the lead linings for coffins. The following excerpts provide an idea of what, in those days, the plumber's duties might include.

After reading the following, when next you see a Burridge soldering adapter, spare a thought for the plumber who once used it!



"The wooden case or shell, made of oak or elm, is specially prepared by gouging grooves where the soldered seams are to be made, and by beveling the upper edge of the lid. The lead is cut in four pieces for covering the top, bottom and sides respectively. ...

[The author provided a diagram to show how the bottom and sides were assembled around the wooden coffin, and advice to avoid solder spreading to where it wasn't needed. Ed.]



"A cabbage leaf or a potato cut in half will answer the purpose of preventing the solder tinning to the lead beyond the seam....

"After the whole has been completed the coffin is then ready for use so far as the plumber can prepare it, but the lining has to be put in, and this is generally done by the coffin maker. When the whole is finished it is removed to the proper room and the corpse put in. At this point, the most unpleasant part of the proceedings commence, especially when the body has swollen from any decomposition that has set up, so that there is trouble getting the lid on. I do not care to describe what sometimes has to be done, but in cases that are not too difficult, a few heavy weights on the lid and a stout cord round the shoulder part, with a "twich" for tightening the cord so as to pull the sides tight to the lid, have to be applied....

"The edges of the seam are then prepared for soldering... A hole, with a carpenter's gimlet or a large bradawl, is made through the lid. In some cases a piece of 3/4 inch or 1 inch pipe is connected to this hole by means of a putty joint, and the other end of the pipe carried through the room window. The hole is necessary when the state of the corpse is such that the plumber cannot work in comfort. The hole is generally soldered over after the lid is finished. As the lid has to be soldered on where the corpse lies, generally in a bedroom, there is frequently some trouble getting a fire for heating the solder and irons, but a good undertaker will generally have a fire ready so that the plumber can quietly and decently do his work and get away as quickly as possible.

[The advantages of the Burridge lamp with its soldering iron adapter are now apparent! Ed.]

"The plumber should also be left alone when working. The task is not a pleasant one, and officious members of the family do not, by their presence, help to make it more so.

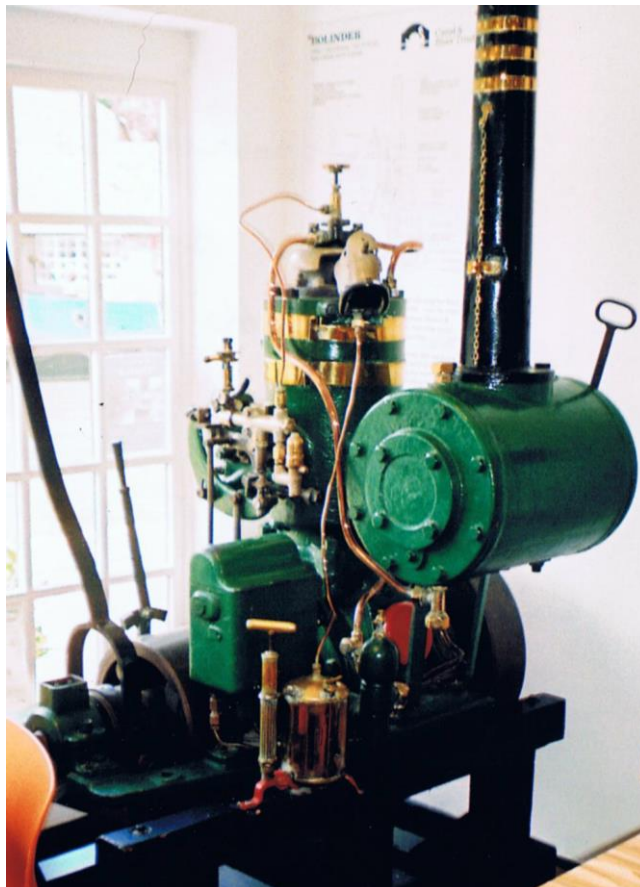
"After the coffin has been soldered down, the last thing is to place it in an outer shell, which is generally made of oak, French polished or varnished, with the necessary handles, name plate and other furnishings."

ENGINE STARTER LAMPS

Keith Hawkins provided these photographs of starter lamps in place on their respective engines. We usually think of starter lamps with vertical burners; however in both cases shown the flame is angled sideways onto the element to be heated.

A SIEVERT VAPOURIA 15 mounted on a Bolinger single cylinder narrow-boat engine. Note the thin pipe connecting the fuel tank to the burner atop the engine.

The photo was taken at the Stoke Bruerne Museum on the Grand Union canal.



A SIEVERT "SIEVERTIA" in action on a Belgian marine "Bolnes" engine in Almere, Holland in 2004.



We'd like to see more pictures of starter lamps mounted on engines!



**This photo taken at the Bedford Steam Fair was supplied
with the suggestion that the caption should read:**

“BUNCH OF DODGY BLOKES YOU’D FIND ON A WANTED POSTER”

INCLUDED IN THE NEXT ISSUE

More Bladon Blowlamps
Another Blowlamp Sculpture
Your contributions of stories from steam fairs, unusual lamps, and photos of collections

More Optimus American
More about “Strength” Brand

INDEX to ISSUES 1-88 (1992 – 2014)

A cross-referenced index to all issues of **BLOWLAMP NEWS** is available from Keith Hawkins on request, with a contribution to cover the costs of printing and postage.

BLOWLAMP NEWS is published in March, June, September and December. Any items for inclusion should be with the editors at least four weeks before the issue date.

SUBSCRIPTIONS: UK 15 UK pounds, International 25 UK pounds
By Paypal to Blowlampnews@hotmail.com Alternatively payments may be made by post to:
Carolyn Rhodes, Mathom House, 71 Ryecroft Road, Hemington, Derbys. DE74 2RE England

EDITORIAL CONTACTS:

Keith Hawkins, 28A Rectory Close, Carlton, Bedford, MK43 7JY Tel. 01234 720974
Graham Stubbs, 17715 St. Andrews Drive, Poway, CA 92064, USA gstubbs222@aol.com

The editors’ thanks go to all the attendees at the Toddington meeting, and to Phil Harris, Max Rhodes, Michel Duval, Bob Prichard, Chris Naylor, Ted Rawson and Keith Hawkins for specific contributions to this issue of **BLOWLAMP NEWS**.

COPYRIGHT DECEMBER 2014

No part of BLOWLAMP NEWS may be reproduced without the consent of THE BLOWLAMP SOCIETY
