

# BLOWLAMP NEWS

No 79

MARCH

2012

The Newsletter of the Blowlamp Society - Founded by Les Adams, August 1992

## NOTES FROM THE EDITOR

**MEMBERSHIP** – I am glad to report that most members have renewed their subscription early this year, this is a great help, as we know exactly where we are for the year. I am glad the increase in subscription did not put you off and a special thanks to those who made the extra donation to funds.

**BIRTHDAY CELEBRATIONS** – Again there is good news on this front as enough people have put their names forward to enable the hall to be booked. The date will be **Saturday 27<sup>th</sup> October** at Toddington Village Hall, the same venue as previous meetings.

It is my hope that we can make this a day to be remembered by filling the hall with blowlamps. It does not matter if your collection does not contain particularly rare blowlamps, what is important is that they are your reason for being a member of the Blowlamp Society so bring along as many as you can manage.

We have members in several countries throughout the world and it is not practical for everyone to attend. To add to the displays in the hall I would like the members from abroad to send me photographs of their favourite blowlamps, together with a picture of yourself and a brief description of the blowlamps and I will make up some display boards for the hall.

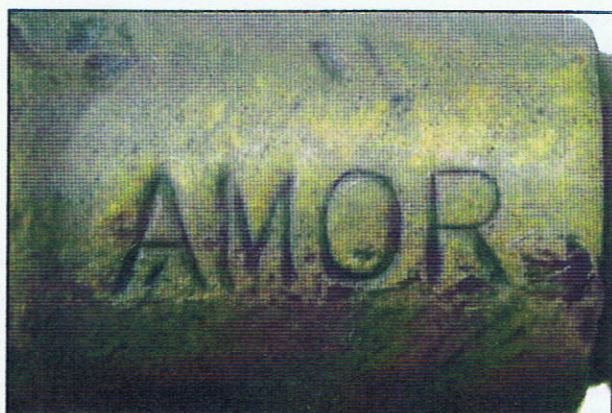
**PHOTOGRAPHS** – Many of you have sent me photographs of your blowlamps over the years and it is always my intention to include as many of these as possible in the blowlamp news. What you must consider when taking a photograph is whether it is possible to reproduce it by photocopying in black and white. The all important thing is the contrast between the blowlamp and the background. If possible try to pose the blowlamp in front of a plain background, either a piece of card or a sheet but please do not use a white background when photographing a highly polished brass blowlamp, the edges of the lamp will merge with the background and make photocopying impossible.

On a personal front I have two pieces of plywood which I have painted with a beige emulsion and this works well. Any light colour will give you good results.

Please keep sending the photographs, as I think it is important to share what information we have with the membership.

## MEMBERS BLOWLAMPS

Michel Duval has sent the following photographs and details of blowlamps from his collection.



Frank Love was established in 1908 and by 1950 was based at 45 / 47 Westminster Bridge Road, London. At this time we can find many items for the lead industry (plumbing) in their catalogue. By 1970 they were also making toilet tanks with the letters XL in a heart logo. The first blowlamp dated from 1908. There are three makes linked with the name LOVE, AMOR; ROMA and XL.



Prompt Delivery can be given of Every Article in this List.

## The "Amor" Blow Lamp

(Registered)

12 Gauge Drawn Brass Body, Fusible Plug, Safety Valve, Ebonized Handle, Cast Brass Nozzle.

A British made reliable Blow Lamp, with a most efficient and powerful flame that will withstand high wind pressure.

No Wind Screen Necessary.

Capacity  $2/3^{\text{rd}}$  pint.

SUITABLE FOR PAINTERS OR PLUMBERS.



Burns

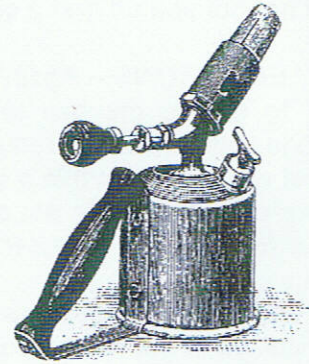
Benzoline

or Petrol.

Every

Lamp

Guaranteed



No. 295

Price Complete 15/- each.

For Spare Parts, See Page 241.

SPECIAL TERMS FOR LARGE QUANTITIES.

For Paraffin Lamp, See No. 104, Page 242.

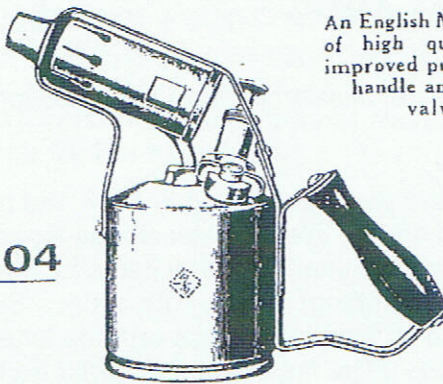
Please give our Catalogue Number when ordering.

## The "Roma" Paraffin Blow Lamp

Capacity 1 Pint.

An English Made Lamp of high quality with improved pump, wood handle and safety valve.

No. 104



Price complete ... .. 24/- each



The handle is different from the one shown in the advert.





The No 399, petrol or benzolene with the "Diamond Brand" logo stamped on the shoulder of the tank.

**The XL Blow Lamp**

For Petrol or Benzolene. Capacity  $\frac{2}{3}$ rd pint.  
 AN ENGLISH MADE BLOW LAMP of Improved design.  
 Self-cleaning Nipple. Automatic Safety Valve. Hurricane Nozzle.  
 Handle secured by Screws.

**No. 399**

Price complete ... .. 23/- each



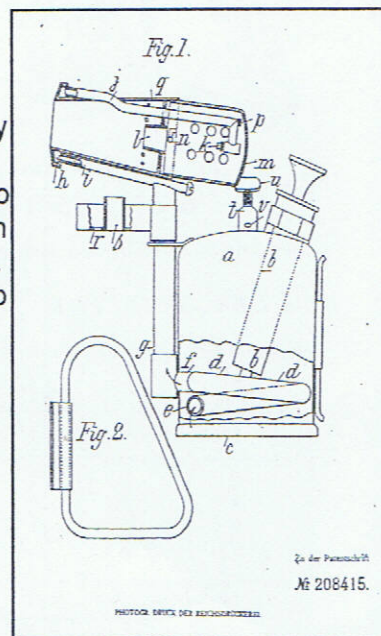
L'ARDENTE blowlamps are my particular favourite. I especially like the marriage, combination of the metals, copper, brass and steel. In my opinion this lamp is very elegant.



The documentation I have shows 4 different models; No1 inclined burner, 0.4 litre (the one in the photograph); No2 vertical burner, 0.7 litre (unfortunately I have never seen this model, only on paper); No2 inclined burner, about 1 litre. It is the same composition as the No1; No3 horizontal burner, about 2 litre and again I have never seen this model.

The "L'Ardeute" blowlamps are rare in France and much appreciated by the French collectors. The name "L'Ardeute" means burning, blazing or scorching in English.

I have a German patent for this blowlamp, dated from 1908. The original patent was registered in France on November 26<sup>th</sup> 1907 by Eugene Francois Martinez. You can see from the picture of this patent that there is no filler cap. You have to remove the pump to fill the tank with petrol. There is no control knob, you have to turn the valve on the top of the tank to regulate or extinguish the flame. There are some grooves, notches inside the two folding handles to prevent one sliding against the other. The priming cup swivels around the vertical pipe so it is easy to fill. The shape of the burner is interesting, the petrol has to be converted to gas and has to travel a long way near the flame. See the picture to understand the way the petrol travels from the bottom of the tank to the vertical pipe, then the lower small pipe under the burner, then the ring, coil around the end of the burner and the upper small pipe on top of the burner and finally the jet.

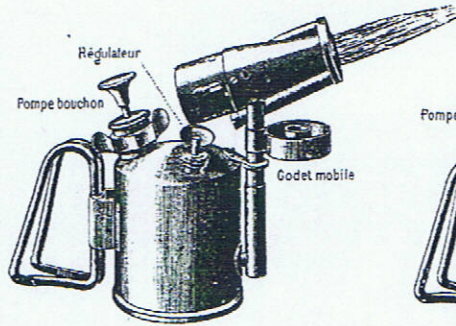


Zu der Patentschrift  
 № 208415.

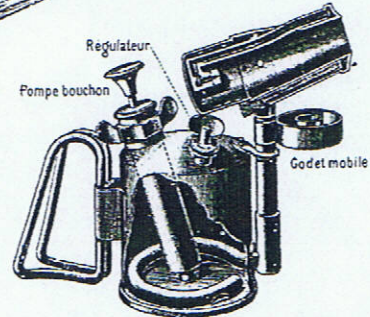
PHOTODUPLICATION DES ARCHIVES



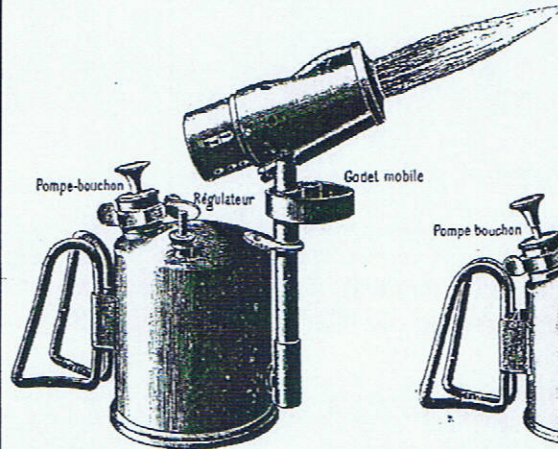
**L' "ARDENTE"**  
**Lampe à Souder et à braser**  
*Brevetée en France et à l'Étranger*  
**Fonctionnant au pétrole LAMPANT**



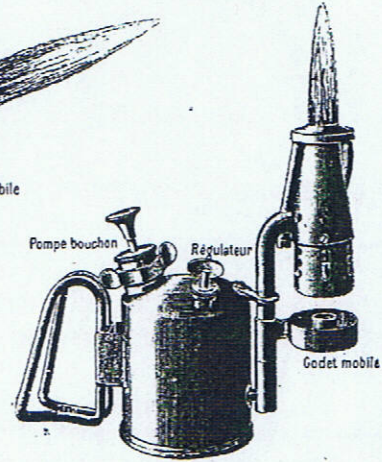
910 Lampe N° 1



Lampe N° 1 Coupe

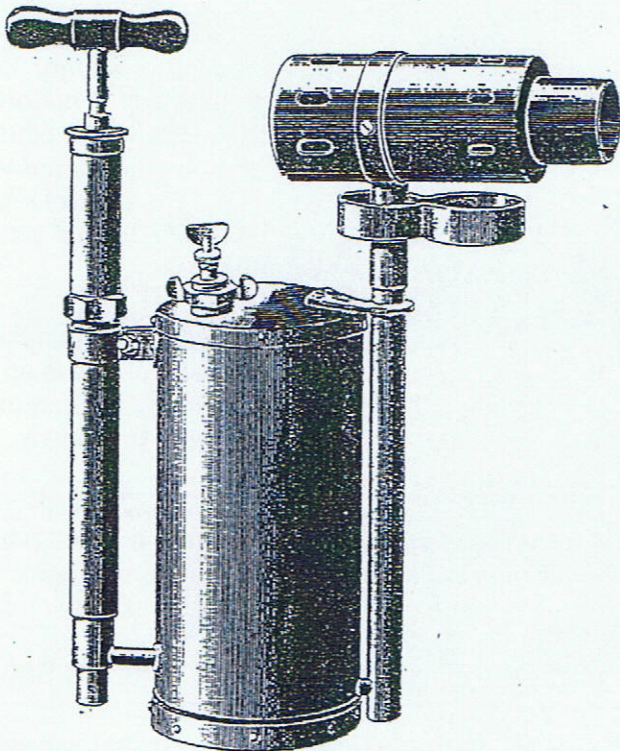


912 Lampe N° 2



911 Lampe N° 1, à flamme verticale

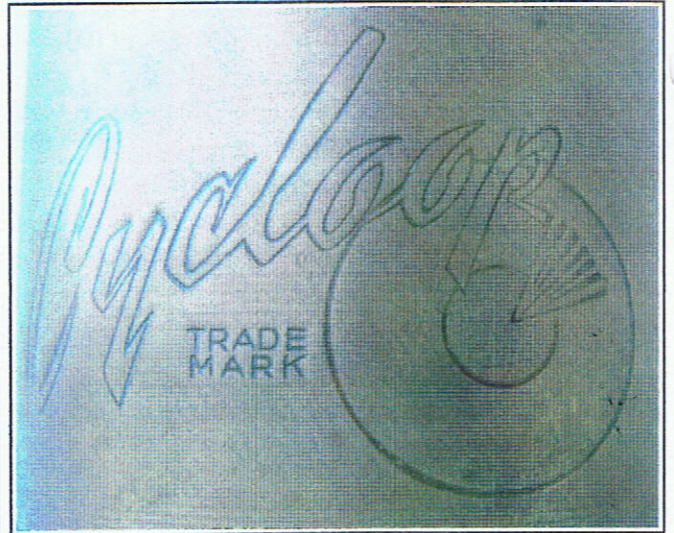
**L'ARDENTE**  
 (Lampe à braser au pétrole)



913. Lampe à braser au pétrole, N° 3.  
 (Grand modèle)



CYCLOOP This is a blowlamp I recently obtained and would like to know more about it.



The tank is 1 pint capacity, all brass with a pump on the shoulder of the tank, a wooden handle, bakelite control knob, air release valve into the filler cap and a horizontal burner with an adjustable collar to regulate the air flow.

"Cycloop Trade Mark" is stamped on the tank. I don't know the country of origin and I have not any information about it. Can anybody help?

LE VOLCAN is a rare French make and we know of only four or five models. The model I have is a 1 litre lamp with a brass tank, coiled pipe and a pump in the handle.



It is a well manufactured lamp, strong, neat and well finished. The priming cup is not original, I added it and it suits the lamp. The black string on the handle is not original, but manufactured exactly like the original. The control knob is also a replacement. My "Le Volcan" dates from between 1910 and 1920.

The control knob is not round, but is a lever, like some US blowtorches. There is an angled pipe at the base of the pump with a square plug to reach the valve pump and to clean it.

There is another air release valve with a tapered coil spring into a bell shaped part. (I don't understand why there is another air release copper pin, like the old blowlamps)

We can read the logo "LE VOLCAN Bte

S.G.D.G. E.MASSON MARSEILLE No 209"

"LE VOLCAN" is the make (The Volcano)

"Bte S.G.D.G." is Brevete Sans Garantie Du Gouvernement, that is to say Patented without guarantee of the government.



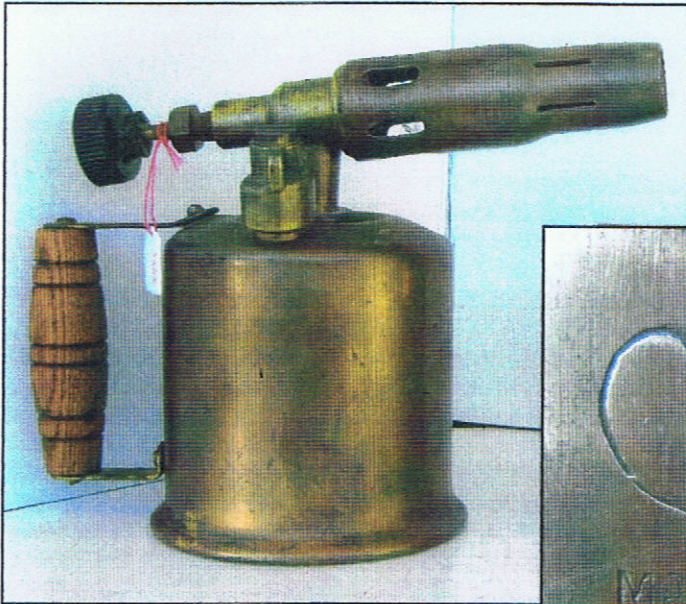
We often find this statement stamped on the blowlamps. It was established by a French law in 1844 specifying that the patents were issued without previous testing and at the risk of the inventors, so there was no risk to the government in the case of an accident or malfunction. This disclaimer disappeared in 1968.

"E.MASSON" seems to be the manufacturer.

"MARSEILLE" is a city in the South of France.

"No 209" indicates that other models could exist.

I know a 2 litre "Le Volcan" similar to mine, maybe other models exist. We can find another logo on a similar 1 litre model with a different manufacturers name "P & E. VERNEAU" and without a model number.



People sometimes mix up "Le Volcan" blowlamps with "Volcan" blowlamps. They are very different and the definite article "the" is very important here...

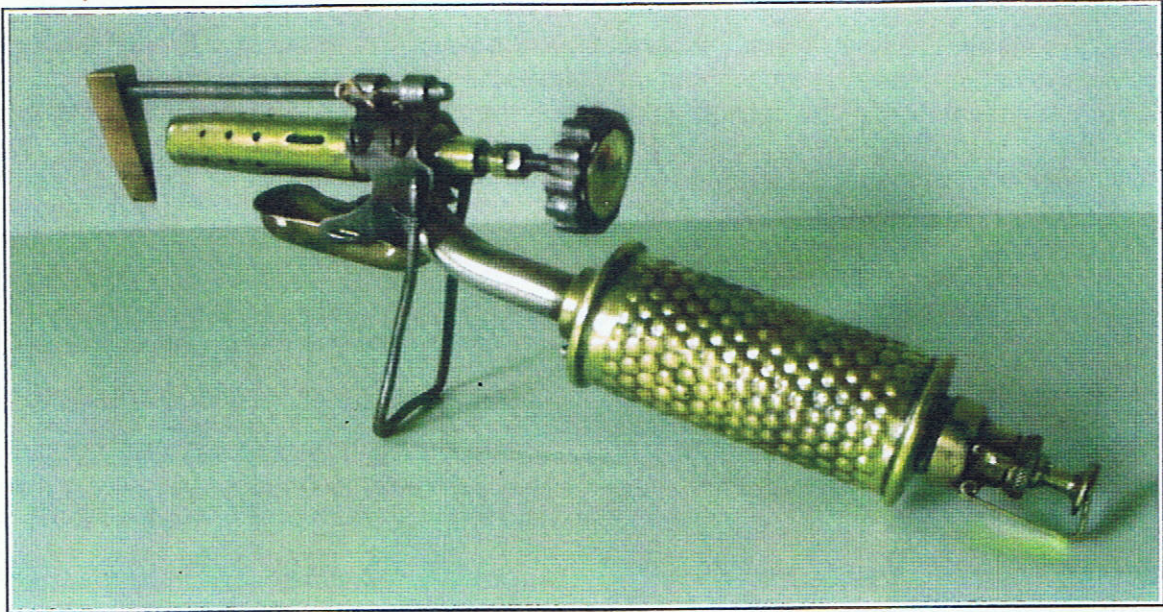
I don't have any documentation about "Le Volcan" or the different manufacturers so I am hoping someone will be able to help.

Bert Wolde of Australia has sent photographs of some of his blowlamps he would like to share with us.



Primus soldering butt.





Another Primus soldering butt, this time with the shorter tank.

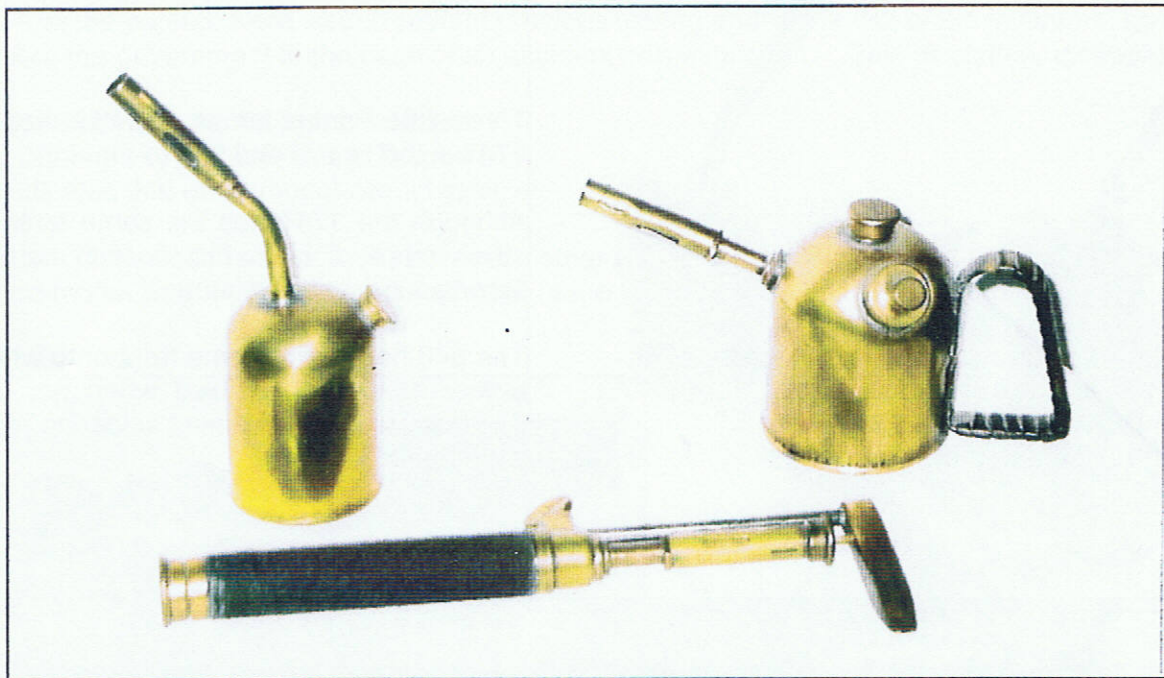


The final three of Berts lamps, top left a nice  $\frac{3}{4}$  pint, copper tank, Australian made Darlton; top right a Valtack with soldering attachment and right a nice little Primus No853





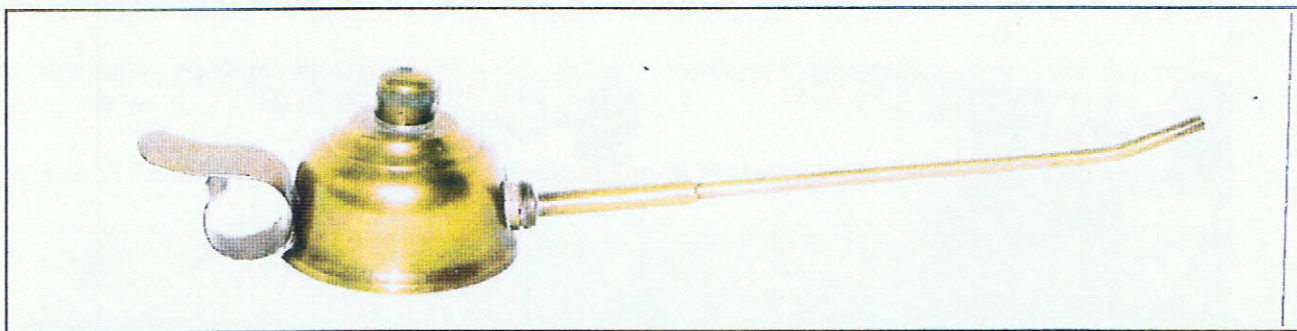
Keith Hawkins has sent in the following selection of ¼ pint lamps.



Three lamps made by John Shaw & Sons. Top left is the Lamb Junior which burns petrol or benzolene only and obtainable in brass or nickel plated form. Top right is the Lamb No1 and will burn petrol, benzolene or naphtha, and is only obtainable in brass. Both the Junior and the No1 are for use in the home, garage or workshop, where they could be used for small brazing jobs, soldering and thawing out frozen water pipes. My No1 has a pressure release valve on the tank which I do not think was standard and was probably added by a previous owner.

The Lamb soldering iron will burn for 30minutes on a full tank of petrol or benzolene and with it's integral copper soldering tip was a useful small implement for use on motoring and radio work. There were two different Lamb soldering irons, the No10, which had the soldering tip bolted directly to the end of the burner and the No11 (as shown) which has a removable / adjustable soldering iron held by a threaded screw on top of the tank. The holding down screw has L.L.T.C. stamped on it (Lamb Lamp & Torch Co)

John Shaw & Sons were located in Wolverhampton and also manufactured blowlamps and cooking stoves right back to the early 1910's. In 1950, at least, they also made "BRITTOOL" chrome steel spanners and wrenches. Their blowlamps were manufactured under the "Governor" trade mark.



This strange little lamp with an internal wick, which does not show on this example, is for use by a piano tuner. There is a rather interesting model, still made in Germany, but with no name on it. It is supplied by a firm in Dartford, but even they do not know the manufacturer (or maybe they just did not want to tell me) The one in the photograph has no name and is probably of European origin. I bought it in Almera and it was very expensive, but I think it is rather nice. I would think it is fired by alcohol and it's use is for when wooden hammers on a piano tend to warp if they get damp, the tuner can apply a little heat and then straighten out the hammer with pressure from his finger and thumb.

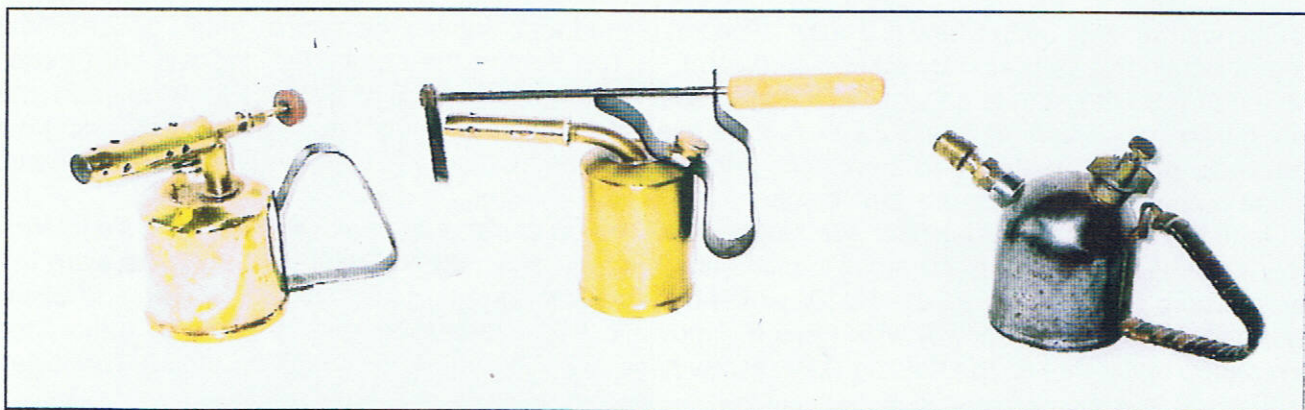




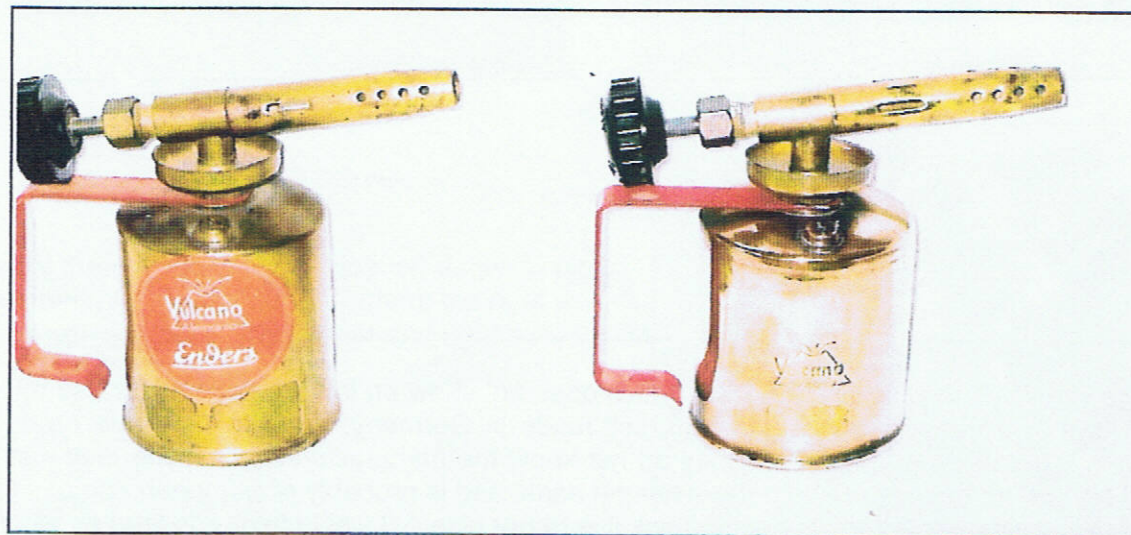
Three little Primus lamps, the 849 on the left, 1747 in the centre and 848 to the right.

Although the 1747 has the same tank as the other lamps, it is in fact a spirit carrier, for lighting a normal blowlamp.

The 849 has a clip on the front onto which the burner tube can be fixed when not in use. These were used for small soldering jobs and were petrol fired.



A French M.L. Canon 75 "U" on the left. M.L. stands for M. Lejeune. In the centre is an Optimus 301 and on the right a Barthel 0010. All are petrol fired.



Two Vulcano lamps, although the left hand one seems to be combined with Enders. Otherwise they are identical, both petrol fired and made in Germany.



Max Rhodes has sent me the following photographs.



The first lamp is an Adler of about 1.5 litre capacity.

There are no other markings on the shoulder of the tank and Max wondered if it could be a Mephisto 3.

(Looking at page 203 of the French Club catalogue No6, it shows all the Mephisto models and the Mephisto 3 would fit )



It is not very often we see blowlamp's from Japan, this one was found at the Newark antiques fair.



## The "Queen" Blowtorch and the Shirley Brothers of Coventry, England

A seller in the United Kingdom recently sold on ebay a previously unknown version of the "Queen" blowtorch for almost a thousand US dollars. An elongated diamond-shaped nameplate on the front has the wording "QUEEN AUTOMATIC TORCH SHIRLEY BROS, PATENT PENDING." A British patent of 1900, which was issued to Arthur and Edward Shirley of Coventry, England, describes exactly the torch made by the American company Bridgeport Brass Company of Bridgeport CT, with offices in Manhattan, New York. Other than the wording on its label, the torch as it appears in the Ebay photos seems to be physically similar to those already known. The appearance for sale of this torch raises the question of who were the Shirleys, and what was the connection of these two men from the English Midlands to an American maker?

On the 21<sup>st</sup> of July 1890, Arthur and Edward Shirley stepped off the ship "City of Richmond" in New York harbor. The steamship was equipped to make the crossing under sail if necessary; the journey took eight days.

Twenty-two year old Arthur, and Edward then aged eighteen, were two of the five sons of William Shirley, a successful manufacturer of "trimmings" supplying the British garment industry.

Coventry, one of England's great industrial cities, had been a center for the silk weaving trade and emerged in the late nineteenth century as the leading location for the production of bicycles.



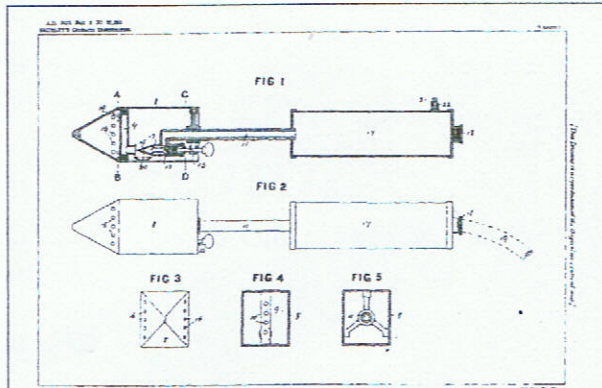
**S/S City of Richmond**

On November the 6<sup>th</sup> of the same year, a third Shirley brother, Amos Reginald, arrived in New York, accompanied by his wife Ruth and five year old young son Amos. The Shirley family was already represented in the United States. The brothers' uncle, also named Amos, had arrived in 1879 with his wife Annie, and daughter Eliza, and they settled in Philadelphia.

The three brothers were to make their mark in the bicycle business on both sides of the Atlantic. Amos Reginald Shirley set up in Manhattan as a maker and seller of bicycles, and later as a dealer in motorcycles. Edward also settled in New York and established an importing business. Arthur returned to England to continue there in the bicycle manufacturing business. That all three brothers were successful in their respective ventures is evident from the numerous transatlantic trips made by each of them, and that are found in arrival records for the Port of New York.

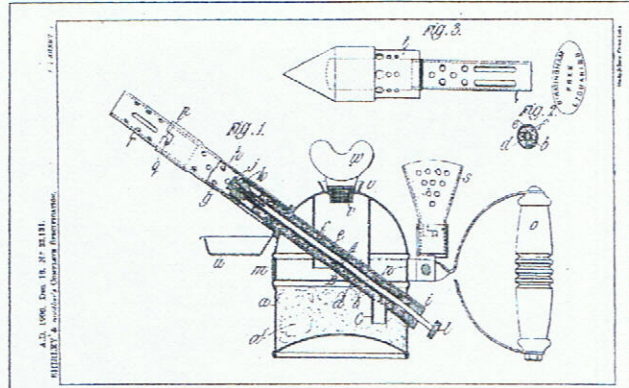
In 1896, Arthur filed for a British patent with the title "Improvements in Soldering Bits", describing a self heated soldering iron with novel features. (No physical example has yet been reported by collectors of blowtorches / blowlamps.) In December 1900, Edward and Arthur jointly filed a patent for what was marketed as the "Queen" torch. The following year, Edward settled permanently in the USA and married a young woman from Mississippi.





British Patent No. 27,383  
Improvements in Soldering Bits

Arthur Shirley 1896

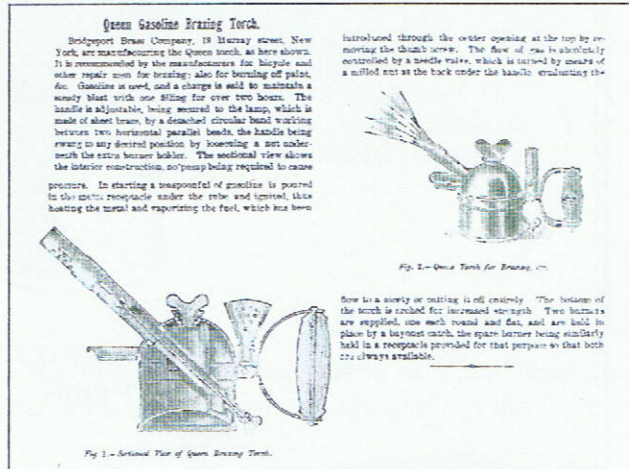


British Patent No. 23,131  
A Portable Vapour Lamp or Stove for the use of  
Plumbers and the like  
Arthur and Edward Shirley 1900

In 1899, more than a year prior to the application for a patent by the Shirley brothers, an American periodical, *The Metal Worker*, carried an illustrated product announcement by the Bridgeport Brass Company, showing the "Queen Gasoline Brazing Lamp" and citing a New York address. Edward and Arthur Shirley were clearly in New York at that time. However, the exact relationship between the two English inventors and the American company that manufactured their unusual blowtorch is still not known. *More Vintage Blowtorches* has more about Bridgeport Brass Co.

### Postscript:

Eliza Shirley, the cousin who was already living in Philadelphia when the Edward and Arthur arrived in New York, has her own place in history. As a seventeen-year-old girl she unofficially commenced the very first Salvation Army work in America soon after she arrived with her parents. The organization still celebrates her pioneer work, and the Salvation Army Eliza Shirley House in Philadelphia provides emergency shelter services for homeless single women and families 365 days of the year.





TRADE **MONITOR** MARK  
*Safest & Strongest*

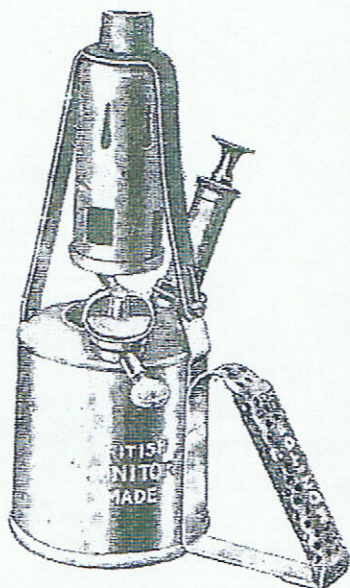
PARAFFIN SERIES.

# Monitor Blow Lamps

CONSTRUCTED OF BEST QUALITY NON-POROUS BRASS

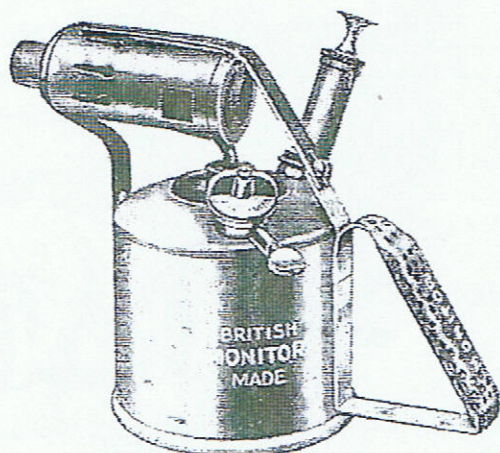
For starting Crude Oil Engines, Works' use and other purposes, the MONITOR No. 28 has no equal.

The Vapouriser is coiled scientifically and will give a blue atmospheric flame.

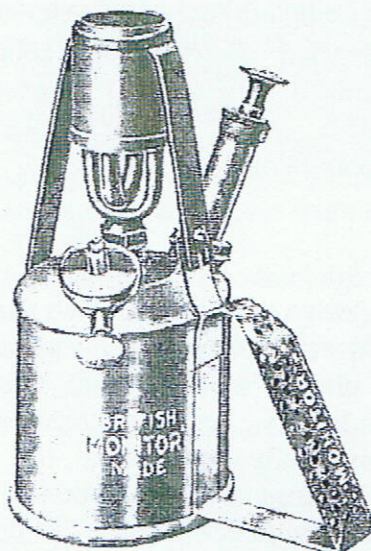


The Bodies are constructed from heavy gauge metal not to be confused with the Foreign makes where price is foremost. Monitor Lamps give more hours of service than any other lamp on the market.

MONITOR No. 28.  
 Price - 15/6



MONITOR No. 31.  
 Price 17/6



MONITOR No. 34.  
 Price 15/6

Every Monitor Blow Lamp is tested before leaving Works. This ensures confidence at the very outset and can be sold with every satisfaction.

**THE MONITOR LAMP PRODUCES A VERY HOT FLAME NOT AFFECTED BY WIND OR RAIN.**

MONITOR No.	28	29	30	31	34	35
Position of Burners ... ..	VERTICAL		HORIZONTAL		VERTICAL	
Capacity of Tank ... pints	1	2	1	2	1	2
Oil Consumption per hour pints	$\frac{3}{8}$	$\frac{3}{8}$	$\frac{3}{8}$	$\frac{3}{8}$	$\frac{5}{8}$	$\frac{5}{8}$
Overall Height ... inches	10 $\frac{1}{2}$	10 $\frac{1}{2}$	7 $\frac{1}{2}$	7 $\frac{1}{4}$	9	9
<b>PRICE</b> ... .. each	15/6	17/6	15/6	17/6	15/6	17/6
Code Word ... ..	BAFAS	BAFLE	BAHAR	BARTE	BALEN	BALAD

Inclined Models provided with Soldering Iron Attachment.  
 For spare parts see pages 28/9.



TRADE MARK

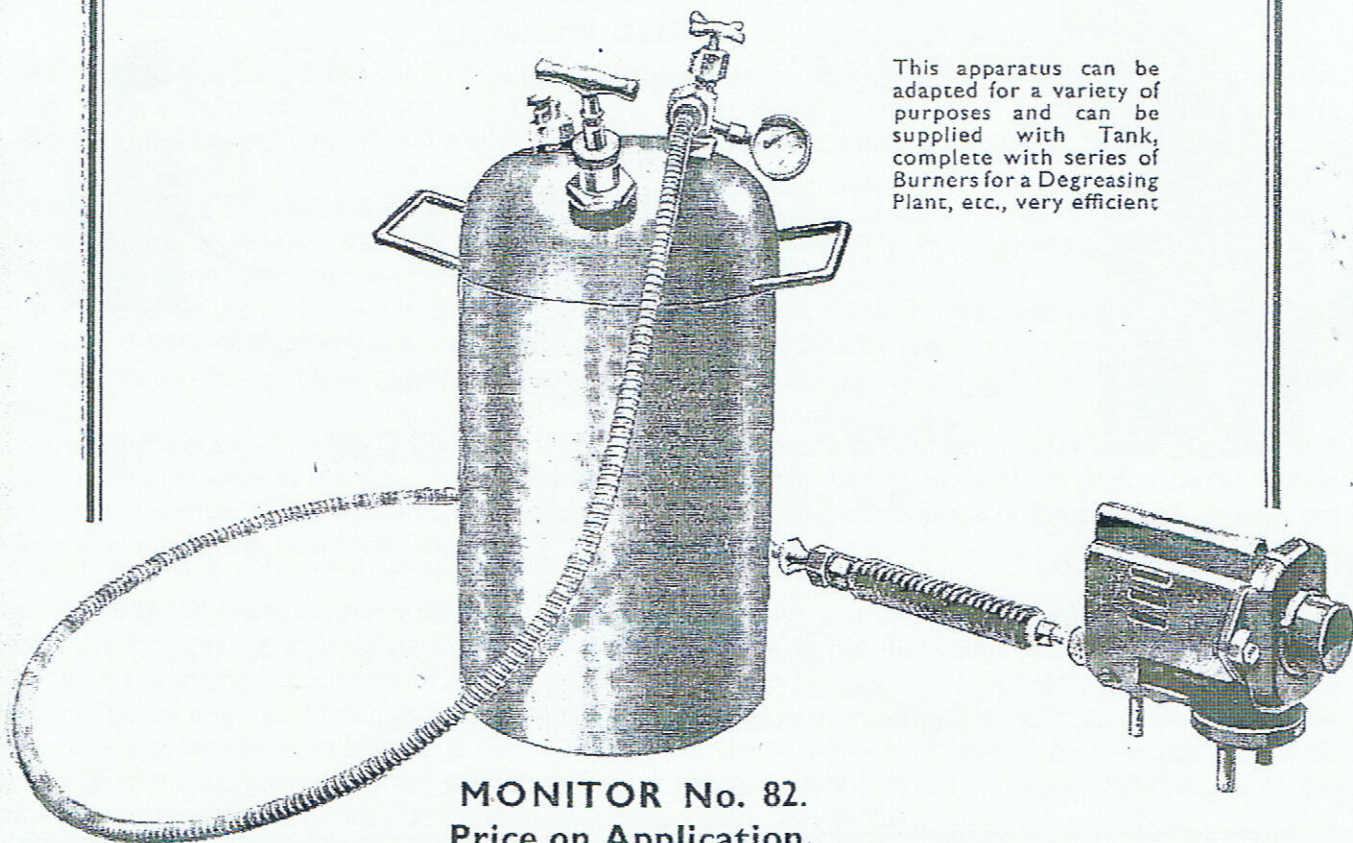
**MONITOR**

*Safest & Strongest*

# Monitor Brazing Lamps

FOR PARAFFIN.

PORTABLE BRAZING OUTFIT.



This apparatus can be adapted for a variety of purposes and can be supplied with Tank, complete with series of Burners for a Degreasing Plant, etc., very efficient

**MONITOR No. 82.**

Price on Application.

2½ gallon capacity. Code Word - TANKO.

AS SUPPLIED TO THE ADMIRALTY. Specially suitable for DOCKYARDS, RAILWAY SHOPS, FOUNDRIES Etc. Tank constructed from heavy Steel sheet, joints strongly welded and fitted complete with Powerful Burner, Pump, Pressure Gauge, also Valve for regulating flame without reducing pressure. Each outfit provided with 6ft. length of superior quality hose connection.

## THE MONITOR SUPER-BRAZER

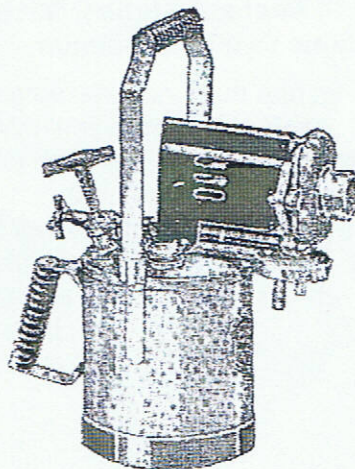
BURNS PARAFFIN — PRE-EMINENT IN QUALITY

THE SOLID DRAWN HEAVY GAUGE NON-POROUS BRASS BODY is of "SQUAT" design and stands firmly on its base, without the tendency to overturning usually found in this class of apparatus. All fittings are machined from SPECIAL METAL to ensure soundness; BAIL HANDLE is pivoted to facilitate operation at various angles and is provided with a simple self-fixing attachment to maintain upright position when not in use; PRESSURE GAUGE recessed in top to avoid damage. Fitted with SAFETY LOCKING PUMP (Pat. No. 234622) also the ORIGINAL MONITOR SAFETY DEVICE in Filling Cap. THE BURNER is a very powerful heating unit, easily detached and adapted for use WITH OR WITHOUT FLEXIBLE EXTENSION; when connected by means of the Metallic Flexible Extension Tube it can be conveniently handled in positions where the ordinary Brazing Lamp is almost inaccessible.

ALL UNNECESSARY WASTE IS ELIMINATED DUE TO PERFECT COMBUSTION COMBINED WITH EFFECTIVE FUEL CONTROL.

Capacity of Tank 6 pints. Overall height to top of handle 18". Length of Extension Tube—i.e., from connection to Burner Nozzle 7' 6". Code Word - BETSR.

Write for full details on Brazing Lamps for cleaning and cleansing ground from vermin, parasites, etc.



**No. 79. PRICE 80/-**

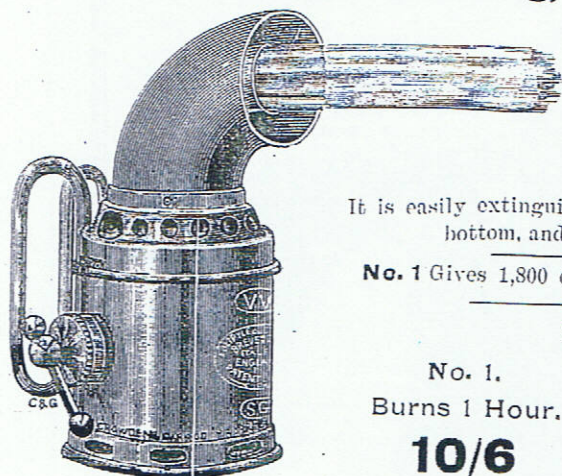
PRICE: Complete with Flexible Tube and Unions 96/-



CROWDEN & GARROD, Ltd., are Sole Proprietors of the English Patents of the "Papillon" & "Paquelin" Paint Removing and Soldering Lamps, and will take action against anyone infringing these Patents.

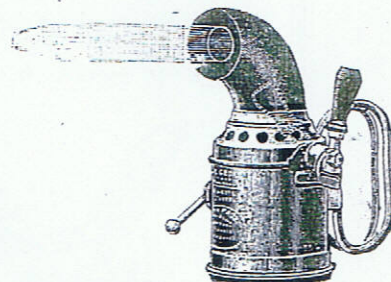
THE PATENT PERFECTED  
**"PAQUELIN" LAMP.**

For Paint Removing, Soldering, and all Plumbers' Work.



The Latest Improvements  
 render this Lamp  
 Absolutely PERFECT.

WITH REGULATOR.



It is easily extinguished by blowing through hole at the bottom, and instantly re-lit if blown out.

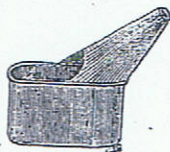
No. 1 Gives 1,800 degrees of heat. Weighs 23 oz. only.

Plain.		With Regulator.	
No. 1. Burns 1 Hour.	No. 2. Burns 2 Hours.	No. 1R.	No. 2R.
<b>10/6</b>	<b>13/-</b>	<b>12/6</b>	<b>15/-</b>

**EXTRA FITTINGS.**

Nipples, 4/- per doz.

Chimneys, 24/- per doz.



Oil Fillers, fitted with Strainer, to prevent any dirty sediment entering and choking the Lamp, No. 1, 8/- per doz.

64,000 "PAQUELINS" SOLD SINCE 1888.

Blowlamp News is published in March, June, September and December. Any items for inclusion should be with the editor at least 4 weeks before the issue date.

Editor - Ray Hyland, 47 Lockington Crescent, Stowmarket, Suffolk, IP14 1DA, England.  
 Telephone - 01449 615648 E-mail [ray.hyland@btinternet.com](mailto:ray.hyland@btinternet.com)

My thanks go to Graham Stubbs, Michel Duval, Bert Wolde, Keith Hawkins and Max Rhodes for their contributions to this newsletter.