

BLOWLAMP NEWS

No 70

DECEMBER

2009

The Newsletter of the Blowlamp Society - Founded by Les Adams, August 1992

MEMBERSHIP

Another year has passed and I hope everyone has had a fruitful one, with many additions to your collections and enjoyable outings to the rally field. I have managed a few really good additions this year, probably the best year I have had for a long time.

For those of you who would like to continue your membership of the Blowlamp Society, I enclose an application form for the renewal of your subscription.

Costs for printing and postage have increased slightly, but I feel we can maintain the current level of subscription for 2010. Please return your forms as soon as possible so that I know where we will be with the finances.

BELGIUM MEETING

Next years meeting in Belgium will be held at the Feestzaal CARACUS in Langemark on Saturday 20th March commencing at 09-00 hours. The meeting is being organised for the first time by Marnik and Katy Van Insbergh, so I would hope as many of you as possible will support him and make this meeting a memorable event. I will certainly be there and invitations are included with this newsletter.

Langemark is situated quite close to Ypres, so is only just over an hours drive from the channel tunnel. Anyone interested can either contact Marnik directly or leave your details with the editor and I will pass on a block booking.

For those wanting to spread the trip over 2 days there is a reasonably priced hotel in Langemark, but I must stress this is a very popular area with tourists visiting the war graves, so the hotel does get well used. So if you would like to stay over night an early contact with the hotel would be advised. Again this is something the editor will do on your behalf if you would like to stay.

Anyone arriving on the Friday afternoon will be welcome at Marnik's house for a drink and a chat, and hopefully a look at his collection.

GARRATT & FOWLER LTD.

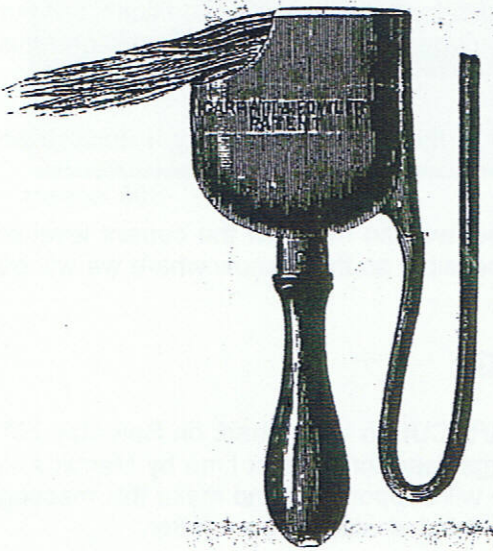
Charles Smith sent me an email in October which included an extract from "The Sanitary Engineer" dated 1st February 1883, which gave a warning against the use of the Garratt & Fowler blowlamps. This was interesting as previous literature had indicated an earliest date of manufacture of 1889.

The sales literature of 1889 states that *"This is a newly invented lamp which can be used in any position for wiping plumbers' joints without the use of irons or fire pots, seaming up lead flats etc., effecting a great saving of time. It is invaluable for burning off paint and any workman can work round sash bars without affecting the glass. The cost is about 3d per day with the use of benzoline."*

However in The Sanitary Engineer, the warning states *"We regret that the plumber's torch should be endorsed by the Painter and Decorator, of London, because it is claimed to save time in the making of wiped and burnt joints. The flame is produced by lamp cotton steeped in benzoline"*

spirit and we would remind our contemporary that it is commending a thing that the local authorities should not tolerate the use of in any house. Substantially the same arrangement, used by a plumber in this city to thaw out frozen pipes, caused the burning of a tenement house, and the loss of ten lives. Any appliance that requires naphtha, gasoline, benzene or any product of petroleum should be excluded from buildings. The replenishing of the supply of gasoline to the torch caused the fire. There is quite risk enough with the ordinary plumbers furnace without taking chances with such explosives. The use of these torches is now prohibited here."

(It sounds to me like someone using the wrong tool for the job. Who in their right minds would pour a gasoline spirit over what was obviously a hot lamp.)

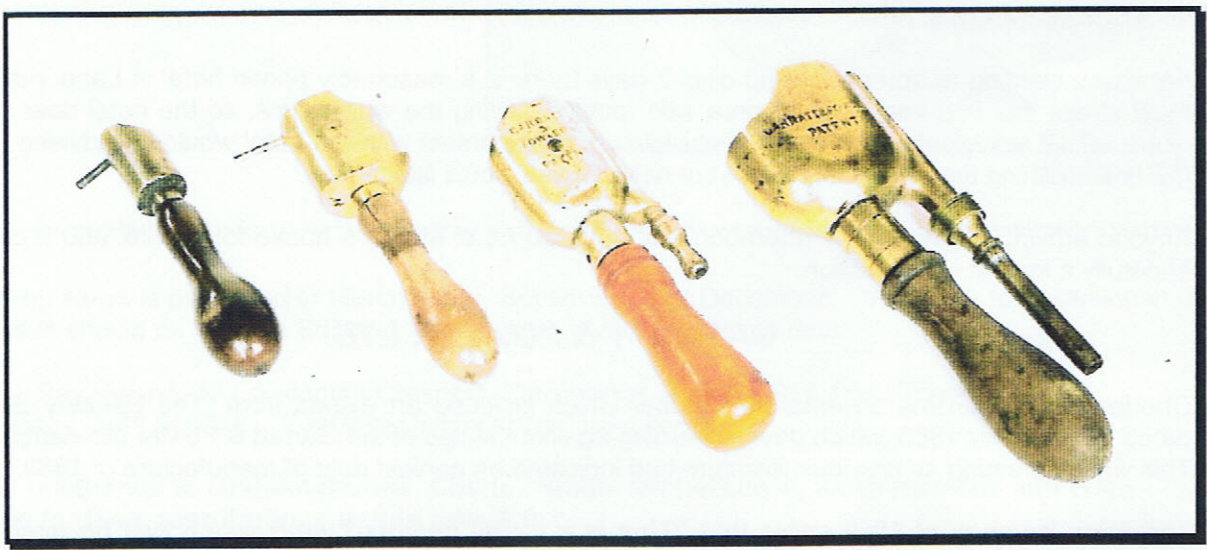


GARRATT'S PATENT
PLUMBERS' AND PAINTERS' LAMPS.

THIS is a newly-invented Lamp, which can be used in any position for wiping plumbers' joints without the use of irons or fire-pot, seaming up lead flats, &c., effecting a great saving of time. It is invaluable for burning off paint, and any workman can work round sash bats without affecting the glass. The cost is about 3d. per day, with the use of benzoline.

Nos.	1	2	3
PRICES,	5/	4/	6/ each.

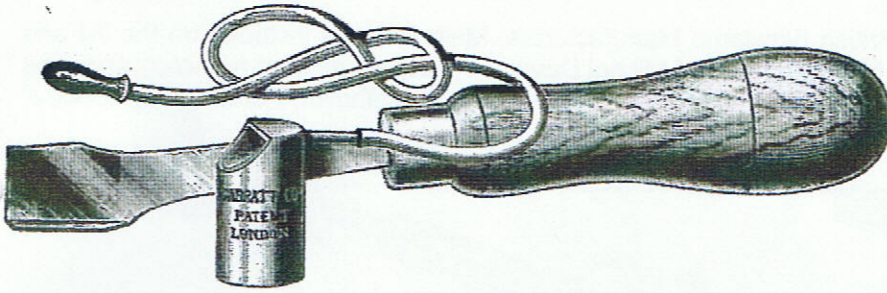
This advert from the Buck & Hickman catalogue of 1889 indicates there were 3 sizes of Garratt & Fowler lamp, but as you will see from the photograph below there were 4 sizes.



It would appear that other manufacturers made similar lamps to the Garratt & Fowler. There are pictures on pages 16 and 17 of the British Blowlamp Catalogue, by Philippe Touillet which show one by Cole's and another marked H & S. and I feel sure Keith Hawkins has one with no markings on it. (I am sure he will tell me if I am wrong.)

Blow Pipe Hacking Gouge.

No. 867.



The above illustration shows a new kind of Hacking Knife or Gouge, for taking out glass from sashes, etc., and requires no hammering.

Complete 3/4. Lamp or Gouge separately 1/8 each.

Some more illustrations from Melhuish's catalogue dated 1905

Gasfitters' Blow Lamp.

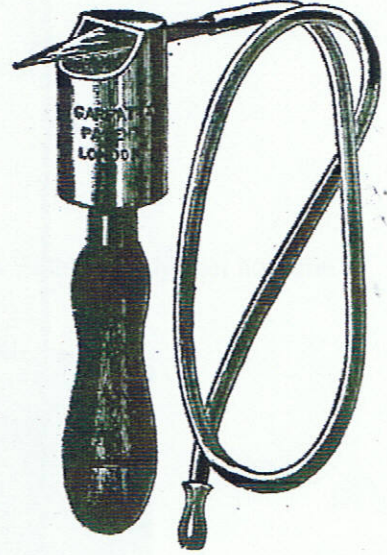
No. 868.



Price 7/8 each.

Patent Blow Pipes.

No. 869.



Small size	...	1/9 each.
Large "	...	2/9 "



Garret & Fowler look alike to the left and on the right one with angled handle.

MELHUIISH

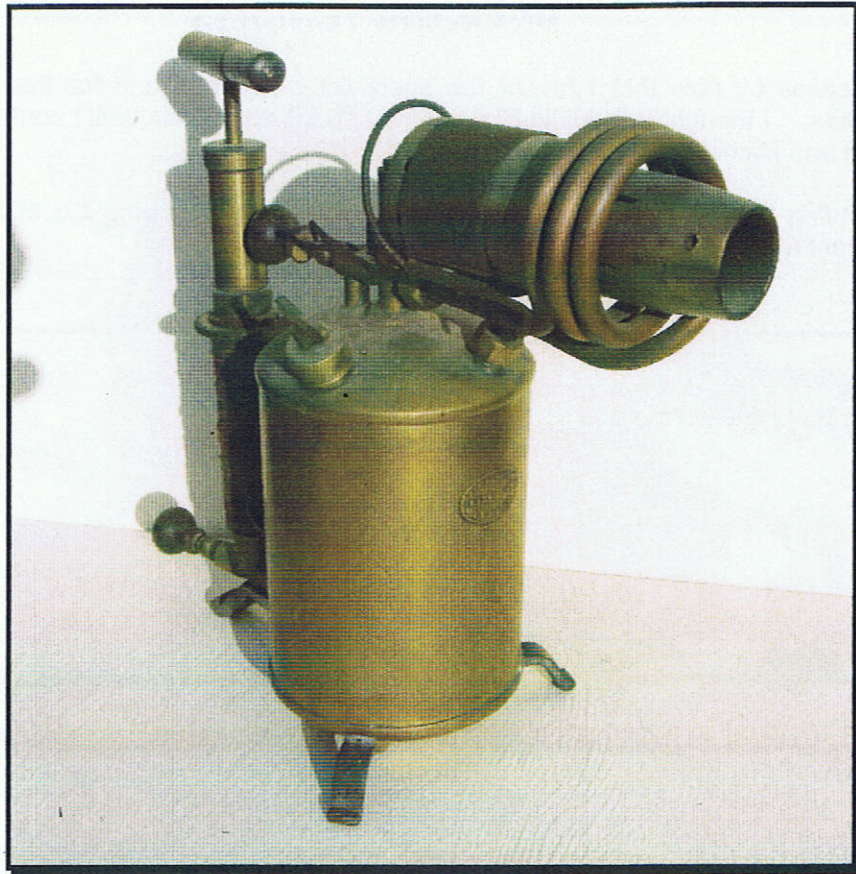
When I carried out my survey of British Blowlamp Manufacturers, Melhuish was included on the list and the only survey returned with one listed was that of Michel Duval. Michel has sent a photograph, and the lamp looks very like a "Multum-in-Parvo" blowpipe lamp with an "R.Melhuish, Fetter Lane, London" label.



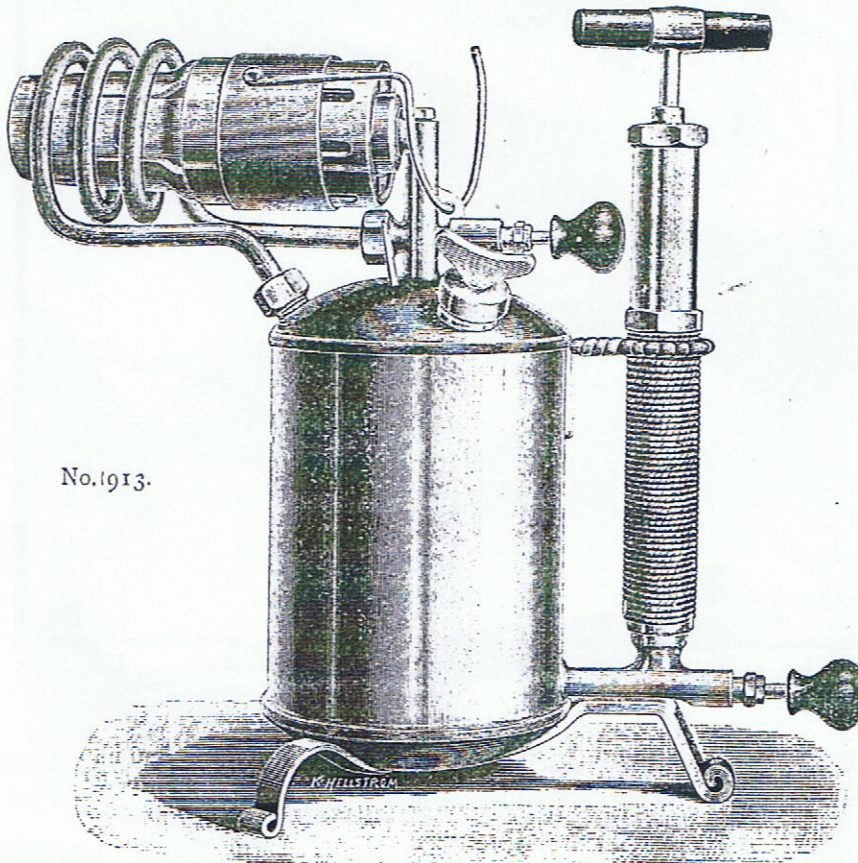
It would appear, from a copy of a Melhuish's catalogue dated 1890, that they sold blowlamps by several different manufacturers, some of which had their own label soldered on. Whilst at the Henham Steam rally in September, someone offered me a collection of blowlamps, one of which was a Melhuish. There were no other markings on the lamp, and looking through their catalogue it would appear to be a No 913 with a tank capacity of 4 pints.

Having seen this lamp and also a picture of Michel's I assumed that any lamp sold under their own name would not have any details of who actually manufactured the lamp. That was until I was shown an item for sale recently on eBay which was described as a Melhuish lamp, but the tank was also clearly marked Primus.

The No 913 looks almost identical to the Sievert HSL1, so I am assuming there could have been collaboration between Sievert and Melhuish.



The Melhuish No 913



No. 1913.

Brazing Lamp.

For Cycle Joints and all kinds of large
Brazing Jobs.

This is constructed for the larger kind
of Brazing Work which cannot be done
with the small Hand Lamps.

It will be found invaluable in Cycle
Works, Shipyards, and in all Metal
Works where hard soldering is done
on a large scale.

This useful Lamp burns Benzoline.
It gives an intensely hot flame, 12 in.
long, and will melt $\frac{1}{2}$ -in. copper rod in
three minutes.

The flame is easily regulated, and the
Lamp can be freely handled in all posi-
tions when in use.

The capacity of the Tank is $\frac{1}{2}$ gall.
With full flame it will burn for 2 hours,
and can be regulated to last 6 hours.

Weight when Empty, 6 lb.

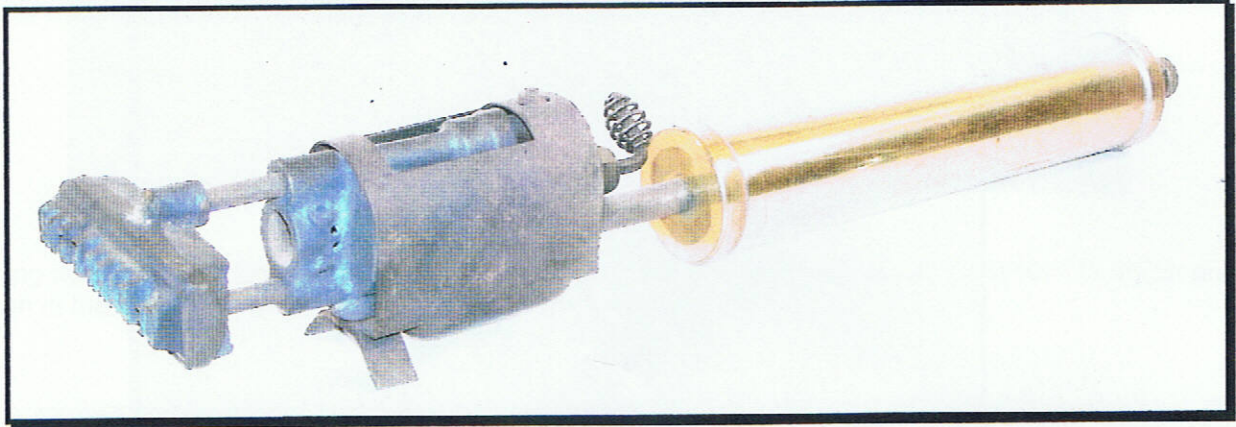
Price (including Box of Reserve
Parts), £2 16.

The Melhuish No 913 as shown in the 1890 catalogue.

BRANDING TORCHES

You will all realise by now that I favour the specialist blowlamps and for this issue I have chosen branding torches. I thought this would fill a couple of pages; that was until I contacted Graham Stubbs, Charles Smith and Michel Duval, the result of which follows.

The first branding torch I acquired was by The Everhot Manufacturing Co of Maywood Illinois and Charles has sent me photographs of 2 models he has in his collection.



Everhot No 30



Everhot No 750

I had always assumed that branding torches were all of a similar design with a tubular tank; that was until I received the following photograph of an Everhot No 50 from Graham Stubbs.



Everhot No 50

The next company to feature is the Burning Brand Co of Chicago, who also operated as the Brand-It Corp, producing a range of gasoline and electric branding equipment



Burning Brand No 200

COMBINATION BRANDING IRON

COMBINATION BLOW TORCH MFG. CO.,
2807 W. Van Buren Street
CHICAGO, ILL., U. S. A.

*We Are the Originators and Sole Legal
Manufacturers of the Combination
Branding Devices*



Patented
Nov. 28, 1922—1436677
March 18, 1924—1487359
Feb. 24, 1925—1527269
Feb. 24, 1925—1527270
Nov. 17, 1925—1562047
Other Patents Applied For

Brand your name on every garage you build and it will be a continuous advertisement for you as long as the building will last.



*Branded Tools Will
Stay With You Until
They Wear Out*

Cement Marking Stamps

We also make cold brands for marking contractor's name, address and date in cement work. Send rough sketch with dimensions for estimate.



Standard Torch, No. 750
Better Built Torch

It burns in rain or snowstorm while others fail to.

Handle 100 per cent cool at all times, which prevents the burning of fingers.

Self-cleaning needle valve, non-pierceable seat.

Pump is outside of gasoline range so that it cannot dry out leather washer.

Gasoline container has only one opening which is on top of the torch. In the event that filling cap is not properly tightened, air and not gas will escape.

Price \$7.50



Trade-Marks Reproduced

*We Make Drawings and
Designs Free of Charge*

Write for Particulars



For further details and literature, write to:

COMBINATION BLOW TORCH MFG. CO.

2807 Van Buren St.,
CHICAGO, ILL.

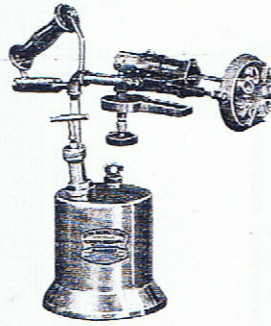
HOME BUILDERS CATALOG

"ALWAYS RELIABLE" Gasoline and Kerosene Brander

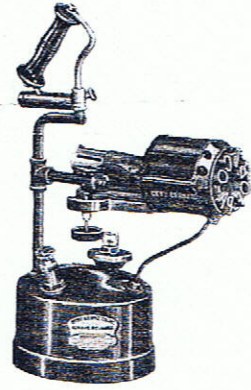
Especially designed and adaptable for every purpose where a branding iron is required.



NO. 100



NO. 200



NO. 300

Covered By Several Patents — Other Patents Pending

No. 100 BRANDER—One quart. Tank made of heavy drawn seamless sheet brass. Brand heats up in less than 5 minutes. Will take brands up to 4" in diameter.

Ideal for Packing Houses, Breweries, and for marking barrel staves, boxes, tubs or for any use where a branding iron is required. Will make over 2000 brands per hour on meats.

No. 200 BRANDER—Two quart. Tank made of heavy drawn sheet seamless brass. Brand heats up in less than 5 minutes. Recommended for any kind of brand where greater fuel capacity and larger brands are desirable.

No. 300 BRANDER—Three quart capacity. Tank made of heavy drawn seamless steel. Brand heats up in less than 5 minutes. Can be made with four quart capacity. Recommended for branding small or large objects including telephone poles, tubs, barrels, boxes, etc.

PUMPS—All branders are fitted with our patented "NEVER LEAK" pumps; the plungers of which screw down to prevent them from becoming bent or broken and keeps them out of the way when not in use. Needle valve at the bottom of the pump forms a positive shutoff; if the bottom checks become out of order, the pumps can still be used by

screwing down the plunger. Flared cylinder at upper end of pump insures easy insertion of washers without injury.

TANKS—All brass reservoirs are of heavy drawn sheet seamless brass, strongly braced and reinforced to withstand excessive pressures. They have a highly polished and lacquered finish.

All steel reservoirs are of heavy drawn seamless steel. Bushings at top are brazed and bottoms are welded. *NO SOFT SOLDER IS USED.*

Reservoirs are equipped with funnel to simplify filling and filler plug is equipped with our patented "Dust Proof" cap.

BURNERS—All burners will heat up brands in less than 5 minutes time. Improved "KEEP COOL" Bakelite wheel does not get hot. Has seamless steel nipple, dip tube and wick. All burners are equipped with self cleaning needle to keep orifice cleaned, and are designed to reduce carbonization.

BRANDS—Brands are made of a special composition which is very durable, and which gives clear, sharp outlines. They are strongly mounted and are arranged for easy replacement or change. Brands can be made with any design or trade mark desired.

PLEASE SUBMIT SKETCH AND STATE DIAMETER OF BRAND WHEN ORDERING.

All "ALWAYS RELIABLE" torches are manufactured from the best materials obtainable and by skilled workmen. They are air, water and fire tested before being shipped, therefore, are **GUARANTEED** as to quality and workmanship.

One company which registered a patent for a branding torch is the National Branding Co of the Oklahoma Territory, although it is not known if they ever went into production.

No. 623,670.

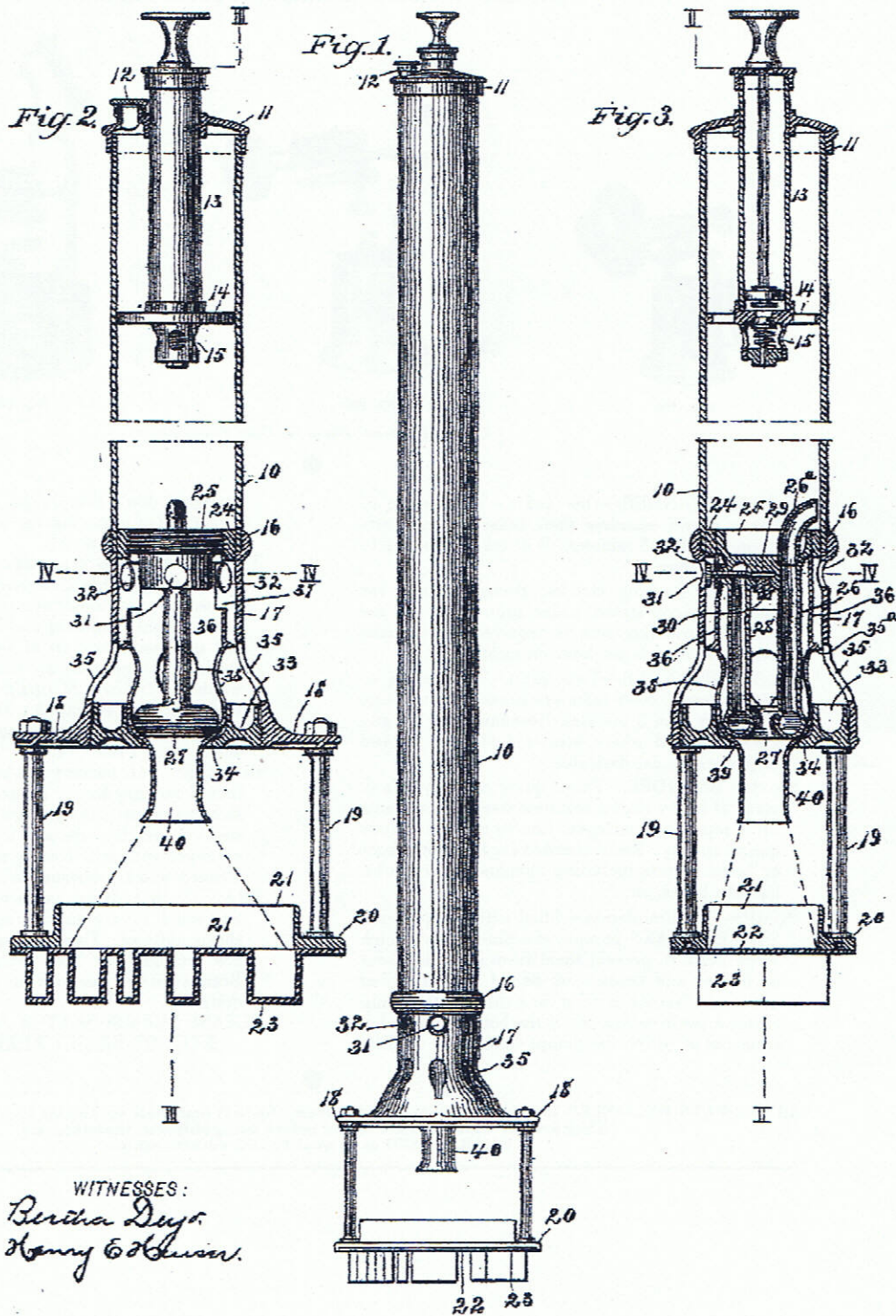
Patented Apr. 25, 1899.

W. F. HUTCHINSON.
BRANDING IRON.

(Application filed Mar. 24, 1898.)

(No Model.)

2 Sheets—Sheet 1.



John Peterson registered a patent in February 1925 for a branding iron attachment for a conventional blow torch. As he has an address of Maywood, Illinois, I assume he is the Peterson half of Peterson - Plummer, a predecessor of the Everhot Mfg Co.

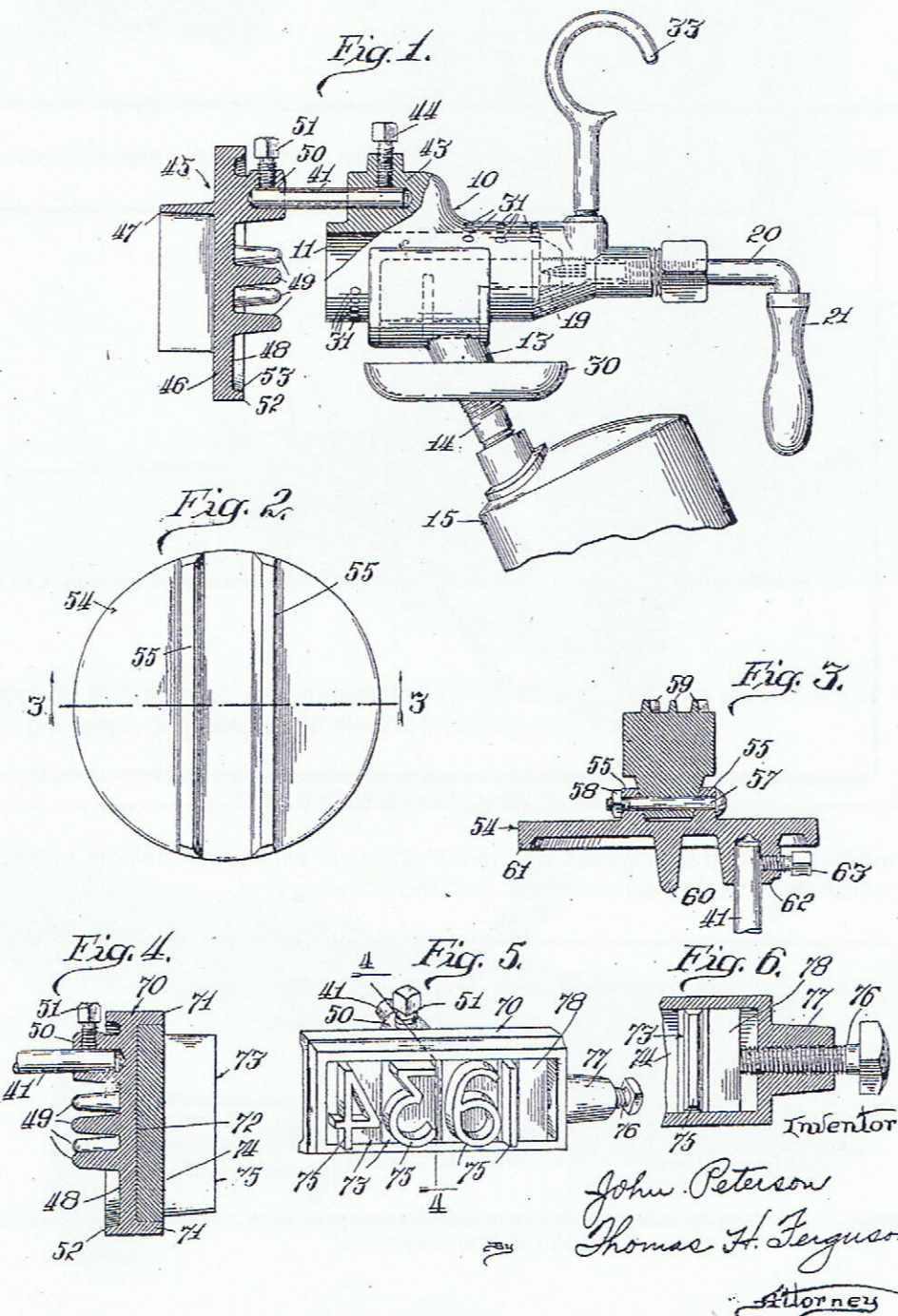
Feb. 24, 1925.

1,527,270

J. PETERSON

BRANDING IRON

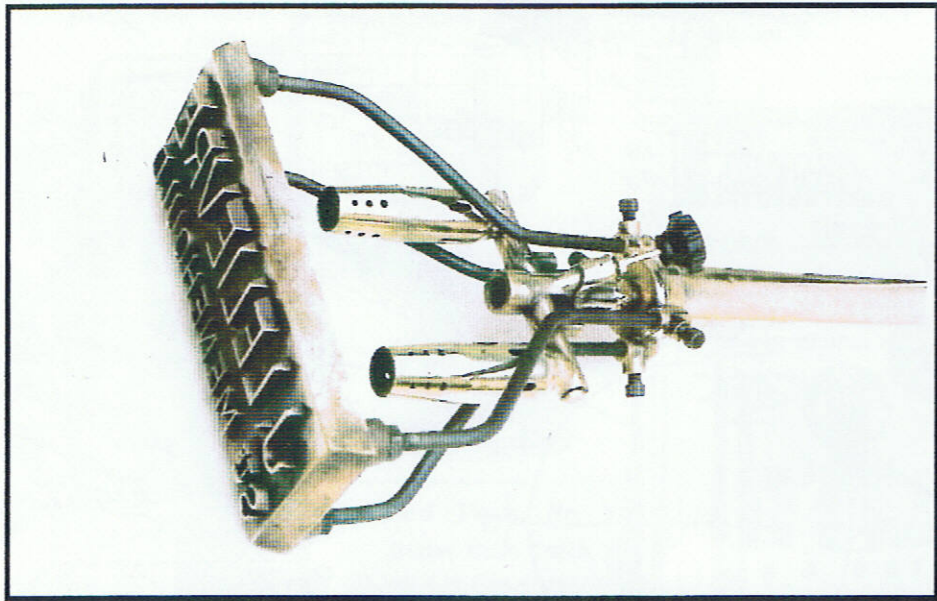
Filed Feb. 8, 1924



We now move across to Europe, with the first manufacturer being Express, who manufactured the "Phlox" branding iron, which was produced in single and twin burner models.

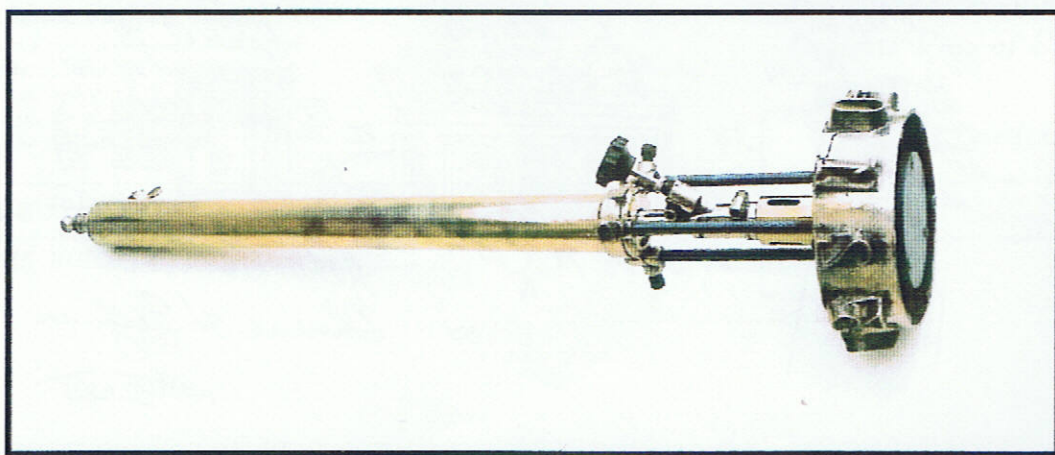


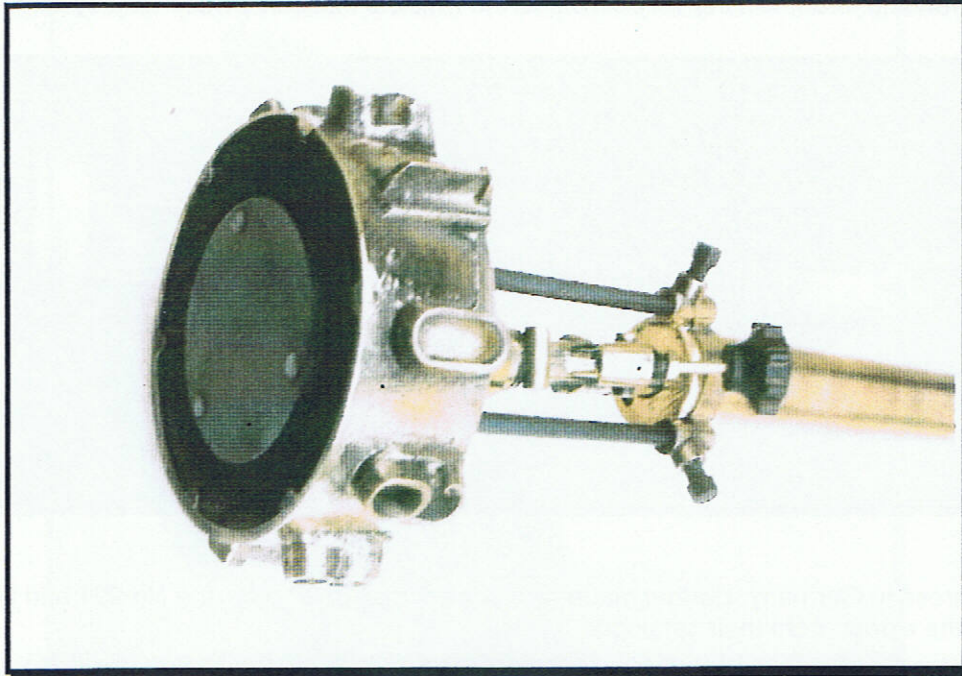
The twin burner on this model allowed for even heating of the branding plate.



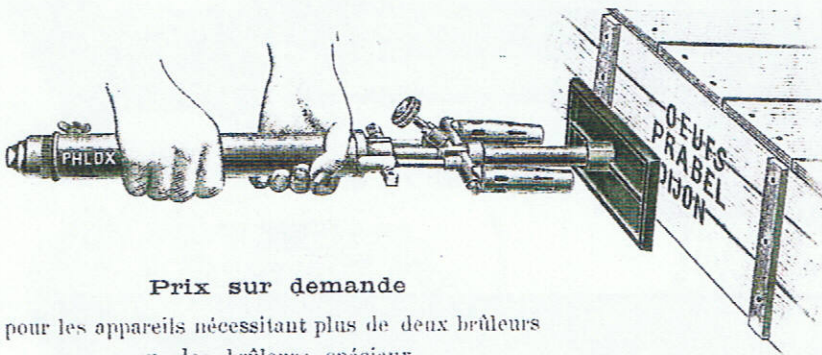
Close up view of the branding plate.

The second model produced by Express was the "Pythagore" which has a single burner playing onto a central plate, which deflects the heat sideways onto the branding ring.





This close up clearly shows the deflector plate in the centre of the branding ring.



Prix sur demande
pour les appareils nécessitant plus de deux brûleurs
ou des brûleurs spéciaux.

862. — ESTAMPILLES

En bronze avec tiges, se montant sur les appareils "Phlox"
et comportant au maximum :

2 chiffres ou lettres de l'estampille.	10, 15 ou 20 m m	25 ou 30 m m	35 ou 40 m m
Prix..... fr.			
Lettre ou chiffre supplémentaire, pièce fr.			

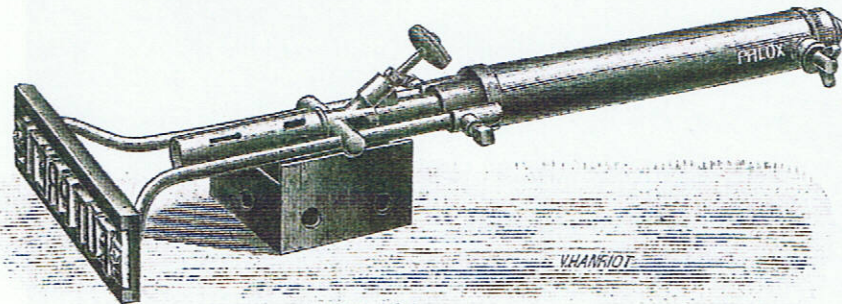
Signes de ponctuation sont comptés moitié prix d'une lettre.

863. — APPAREIL "PHLOX" à composteurs CARACTÈRES MOBILES

Composteurs 1 ligne pour fers à 1 brûleur

Dimensions	Nombre de caractères	Hauteur des caractères	Prix du composteur seul
104 x 42 m m	6	15 ou 20 m m	
108 x 52 m m	5	25 ou 30 m m	
114 x 62 m m	4	35 ou 40 m m	

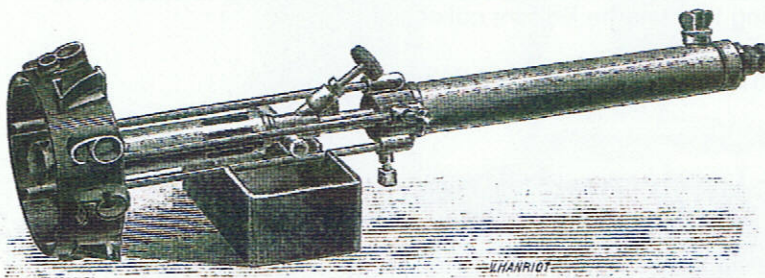
Ces composteurs sont munis à chaque extrémité d'une vis de réglage permettant de rapprocher la gravure au centre de l'estampille



864. — NUMÉROTEUR "PYTHAGORE"

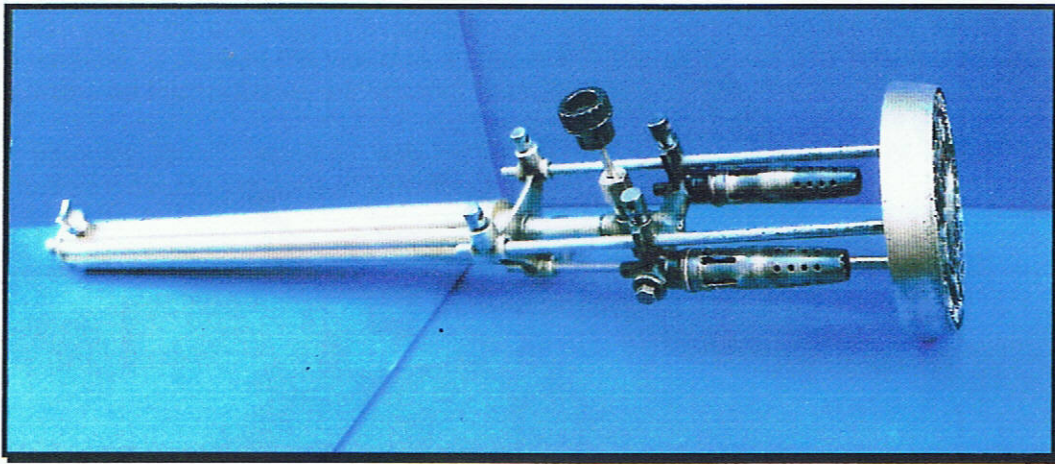
Fer à cadran fixe pour numéroté: caisses, échelles, fûts, etc.

Nos	Hauteur des chiffres	Longueur totale approx.	Contenance (environ)	Poids total (environ)	Durée de marche (environ)	Prix
0550	15 m m	605 m m	30 cl.	2 k. 500	2 heures	
0555	15 "	705 "	50 "	2 k. 750	3 h. 1/4	
0560	20 "	610 "	30 "	2 k. 800	2 heures	
0565	20 "	800 "	50 "	2 k. 800	3 h. 1/4	
0570	30 "	780 "	50 "	3 k. 700	1 heure	
0580	40 "	800 "	50 "	4 k. 300	1 heure	
0590	50 "	840 "	50 "	4 k. 900	1 heure	

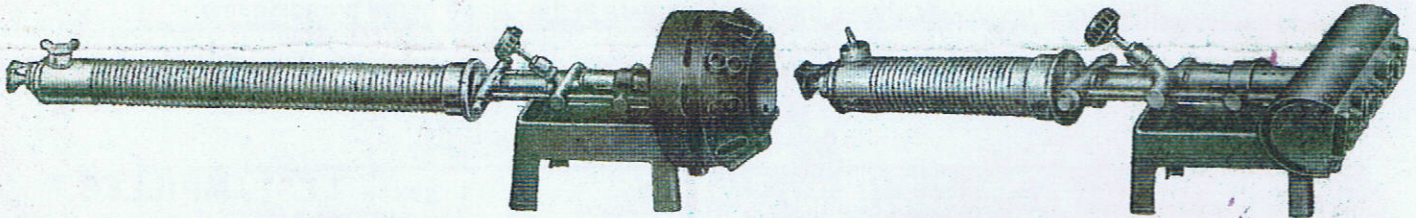


An extract from a 1923 catalogue showing both Phlox models and the Pythagore.

Another branding torch, looking very similar to the Phlox is made in Switzerland by Zurich – Oerlikon

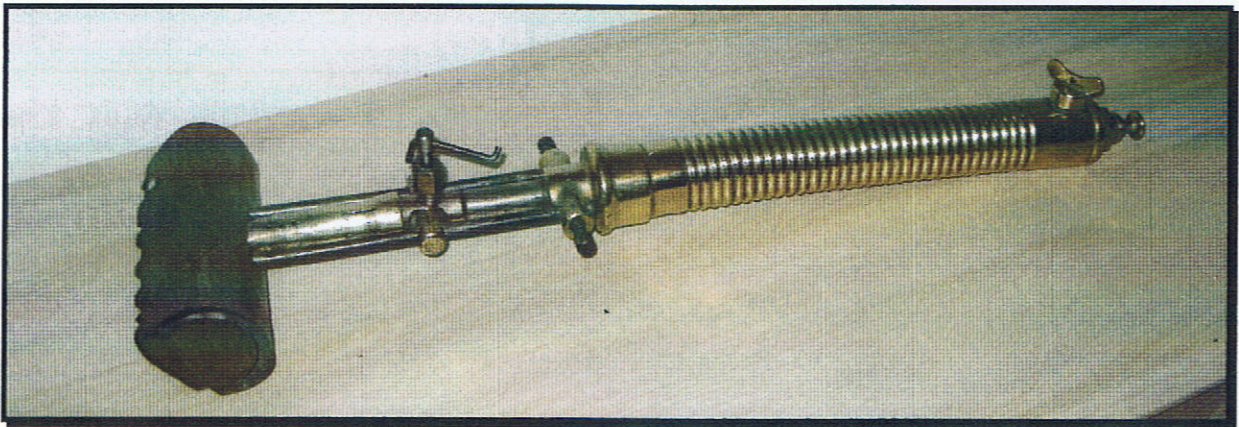


Moving across to Germany, Barthel made two types of branding torch, the No 991 and No 971 which are shown in the extract from their catalogue below.



BARTHEL N° 991

BARTHEL N° 971



Barthel branding torch in the Editors collection.

The advert below is from a Buck & Hickman catalogue dated 1930.

Sievert's Improved Brander

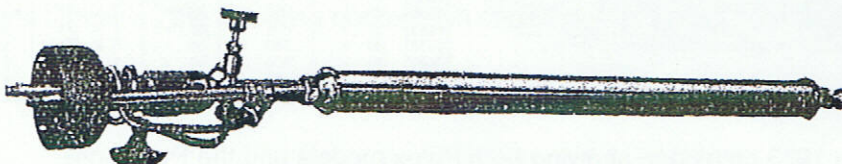


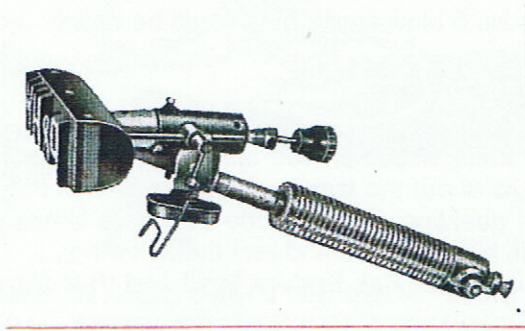
Fig. 6475

For Benzoline or Petrol
Capacity, 1½ pints.

Very useful for marking railway sleepers, barrels, cases, carcasses, etc., etc., rapidly, uniformly and economically.
Burns, 1½ hrs. ; Length, 40 in. ; Weight, empty, 5½ lbs.

PRICE, £3 15 6 each

The final two manufacturers that I have knowledge of are Vulcano and Hahnel; the pictures below are from catalogues which are undated.



Vulcano

Brennstempel für Benzin



0,25 l

Hahnel

NAUTILUS No 6

By Keith Hawkins

On the face of it here are two very similar lamps for the immediate use as Petter Handyman hot tube ignition lamps.



However, things are not quite as they should be. I think that we all know that the Nautilus No 6 is an early Primus lamp as shown on the right of the photograph. But the lamp on the left is also a Nautilus No 6, the name of which is stamped on the body of the tank rather than on the top. The name Nautilus forms a circle together with the words, Made in England, and the No 6 is in the centre of the circle. Now I know that Primus originated in Sweden and were also manufactured in the United States by the Primus Cooking and Heating App. Of New York. But when did they get manufactured in England? You will notice that they both have cane covered handles, which denotes them being of early 1900's manufacture and the smaller one has all the usual Primus printing on it, including the twin lamp dating system, below the word Primus. I would therefore date this one as pre 1911. But the English version has no mention of anything Primus on it except on the filler cap and the letters L.L.T.C. on the pressure release valve. I do not know what these letters stand for and of course they may not be original to the lamp. The centre supports for the burners are also different, thus making the English version slightly

in the photo; otherwise they are identical. So if anyone knows anything about the English version, please let me know.

(I seem to think that Optimus also manufactured Nautilus No 6 blowlamps, but I could be wrong. Editor)

BN69 – RECENT FINDS

Under the heading of Recent Finds on page 3 of BN69 there was a photograph of a Hahnel blowlamp owned by Chris Naylor. What Chris thought was unusual about the lamp was the position of the pump on the left hand side of the handle. In answer to Chris' question, does anyone else have lamps with a similar pump position; Willy Mouton has searched through his collection and lists the following.

Barthel Stahlplatin, Barthel 0181S, Barthel 296/3, Hahnel 50S, Bat, Enders 9013 and Vulcano 432



Barthel Stahlplatin



Enders 9013



Vulcano 432



Barthel 296/3



Bat



Hahnel 50S



Barthel 0181S

Blowlamp News is published in March, June, September and December. Any item for inclusion in the next issue should be with the Editor at least 4 weeks before the issue date.

Editor – Ray Hyland, 47 Lockington Crescent, Stowmarket, Suffolk, IP14 1DA, England.
Telephone 01449 615648 E-mail ray.hyland@btinternet.com

Finally my thanks to Graham Stubbs, Charles Smith, Michel Duval, Keith Hawkins and Willy Mouton for their contributions to this newsletter.

.....

Windrush Valley Collectors Society

Ray Everett has asked me to advertise their rally at Burford, the heart of the Cotswolds, on 12th and 13th July 2010. Any member wishing to display at the rally would be most welcome. You can contact Ray on 01993 213030.