

# **BLOWLAMP NEWS**

No 67

MARCH

2009

The Newsletter of the Blowlamp Society – Founded by Les Adams, August 1992

---

## **FUTURE MEETINGS**

We are into a new year and looking forward to an improvement in the weather so that we can think about preparing for the rally season and scouring the car boot sales to find that elusive lamp. I know many of us enjoy the rally circuit because it gives a chance to meet other collectors with similar interests. What I will miss is the annual meeting just dedicated to blowlamps. Over the years we have had meetings in the spring and autumn, but they have both died out through lack of support and a willing volunteer to organise them.

I must ask the question; does the membership want this sort of event? If the answer is yes, then I would be prepared to organise a meeting this year, but it would have to be in the Ipswich area. What I need from you is a commitment to attend and that would need to come from at least 25 members to make it worthwhile. So if you want a meeting this year, either telephone on 01449 615648 or Email at [ray.hyland@btinternet.com](mailto:ray.hyland@btinternet.com) no later than 1<sup>st</sup> April, which will still give me time to find a venue.

## **DIARY DATES**

Keith Hawkins has reduced his rally calendar this year, but he will still be offering the usual hospitality at the following events.

16<sup>th</sup> and 17<sup>th</sup> May – Power Works, Waltham Cross; 30<sup>th</sup> and 31<sup>st</sup> May – Canal Festival, Eturia, Stoke on Trent; 27<sup>th</sup> and 26<sup>th</sup> June – Banbury; 4<sup>th</sup> and 5<sup>th</sup> July – Chiltern, Prestwood, Bucks; 18<sup>th</sup> and 19<sup>th</sup> July – Marcle; 31<sup>st</sup> July to 2<sup>nd</sup> August – Kemble; 21<sup>st</sup> and 22<sup>nd</sup> August – Lincoln; 2<sup>nd</sup> to 6<sup>th</sup> September – Great Dorset Steam Fair; 12<sup>th</sup> and 13<sup>th</sup> September – Barleylands.

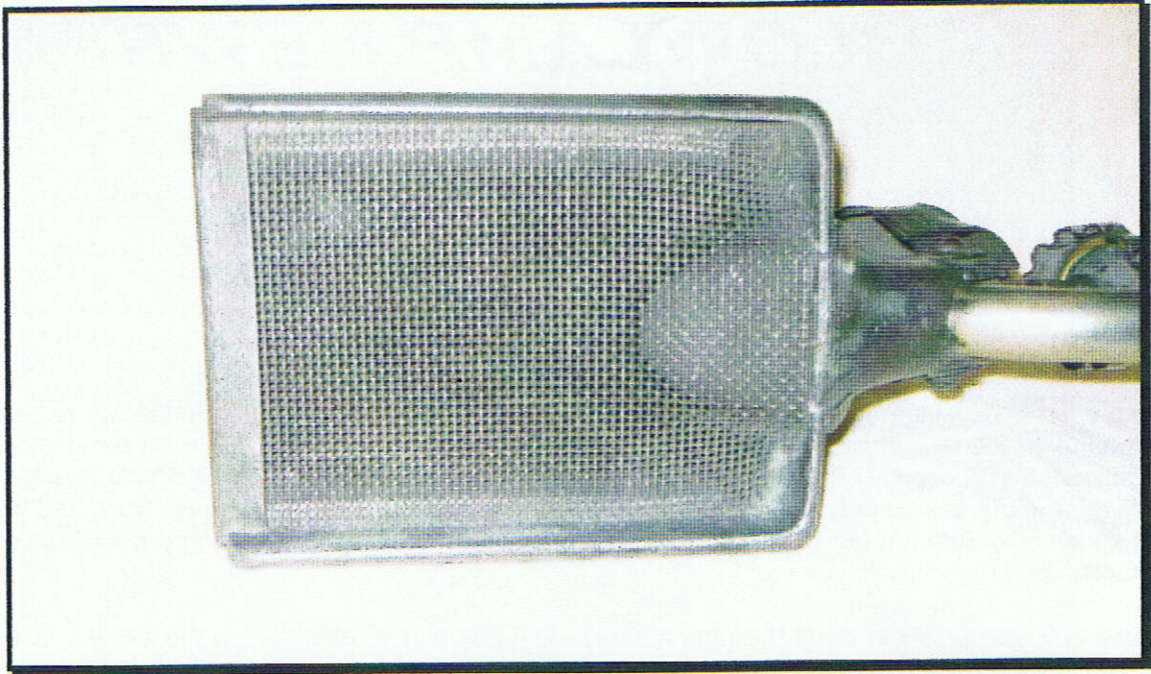
## **PAINT STRIPPING**

I always like to find blowlamps which were made or adapted for a specific task and for those of you who can remember or who might still have painted wooden windows and doors, (before the advent of uPVC) the need every few years to strip back to bare wood and start with fresh paint. Obviously any blowlamp, accompanied with a stout scraper, would do the job, but the blowlamp manufacturers added certain refinements to make the job a bit easier.



This first lamp is a Primus 951, especially made for stripping larger areas of paint.





The flame would heat the gauze, which would then be laid on the area to strip until the paint started to blister.



For those that preferred to use a scraper, Primus produced this 655 with a flared burner to spread the flame over the surface to be worked.





The flared burner on the Primus 655

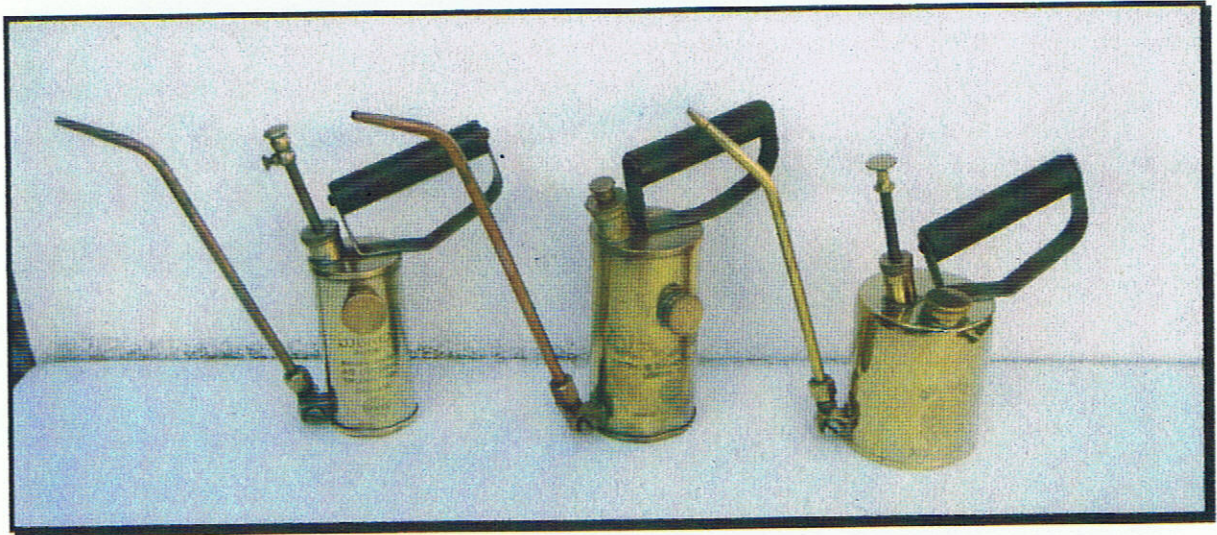
The final photograph shows a lamp made for the one handed decorator. The lamp is manufactured by Phoemax and has a paint scraper permanently attached to the burner.





## ASSOCIATED ITEMS

Many of us like to collect items associated with the manufacturers of blowlamps. I have a small collection of items ranging from spanners to oil cans, some of which are shown in the following photographs.



Optimus made a series of oil cans the ones shown, from left to right are the No1, No502 & No130. The model numbers seem quite random, does anyone have any catalogue information on the range produced.



These 3 items were all manufactured by T.E. Bladon; on the left is a measure for paraffin, the centre is a wick lamp and on the right, another oil can.

If any member has other items within the ranges shown, or from other manufacturers, I would be pleased to hear from them.



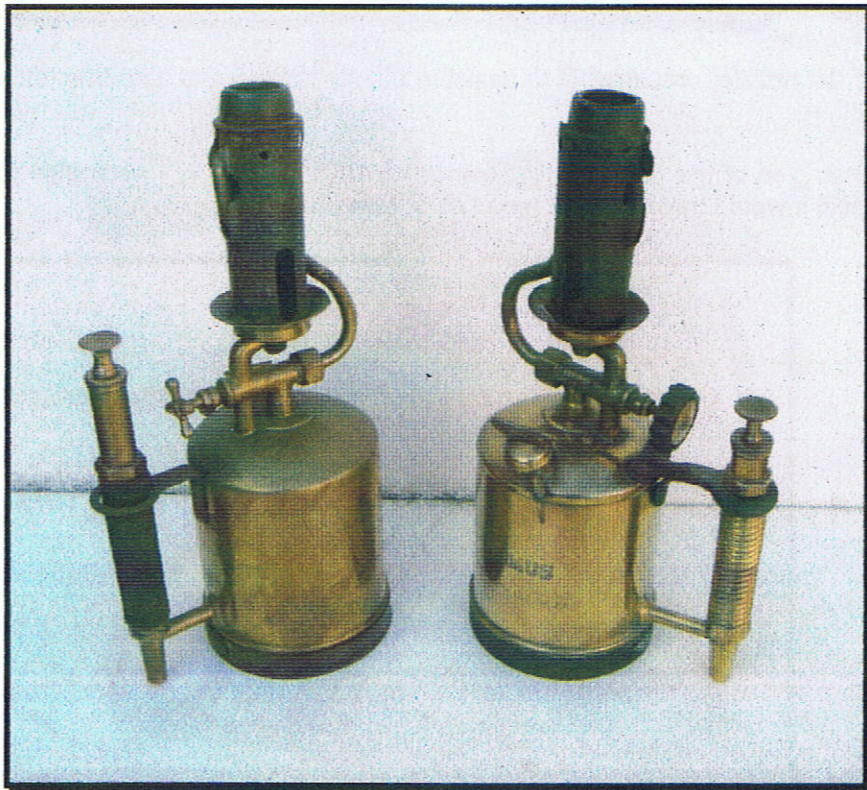
## ENGINE STARTING LAMPS

In BN 66 I included some photographs of engine starting lamps which were manufactured by the companies which made the engines.

In this issue I am including blowlamps which were manufactured by Primus, but specifically for engine manufacturers.



This "Nautilus" lamp was made for Petter's of Yeovil, who operated out of the Nautilus works.



Two versions of the 617, the one on the left being the engine lamp, made for Allen Engines of Aberdeen.



## **PRIMUS 850 SERIES**

*By  
Keith Hawkins*

I do find some difficulty about these lamps, in that some date back to the 1898 catalogue and some are shown in catalogue No362 of approximately 1939/40. Out of the series, No858 is one I can find no trace of anywhere, and I have looked through many Primus catalogues, which makes me wonder if it was ever made. I have all the others so would like to hear from anyone who has an 858.

Numbers 850 to 853 are of ¼ litre capacity and the remainder are 1/3 litre and all petrol fired. All have inclined burners except for No587, which is inclined, and No's 852 & 856 which are verticals.

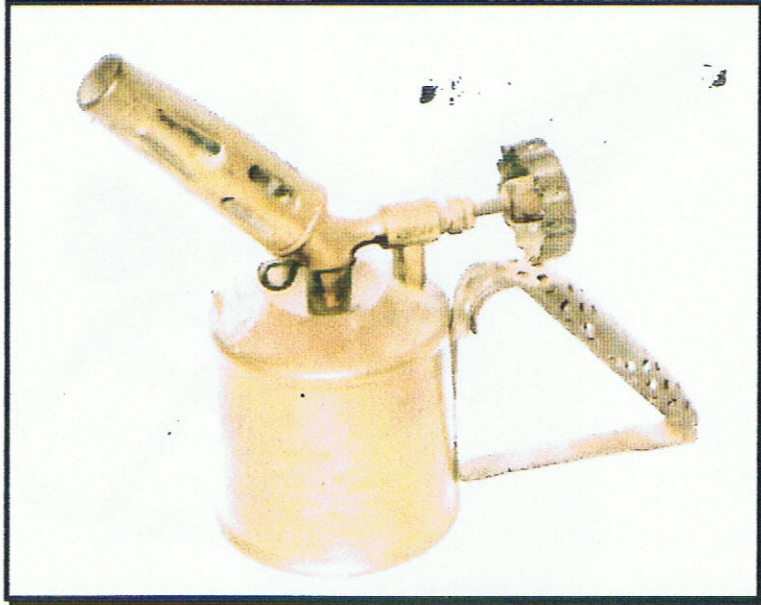


The 850 has a flat nozzle, presumably to assist in paint stripping and also has folding handles; this one dates from 1935.

There are 2 examples of the 851, the first being pre 1911 in date. I apologise for the lack of control knob, but I expect it would have been of wood as shown on the 852.







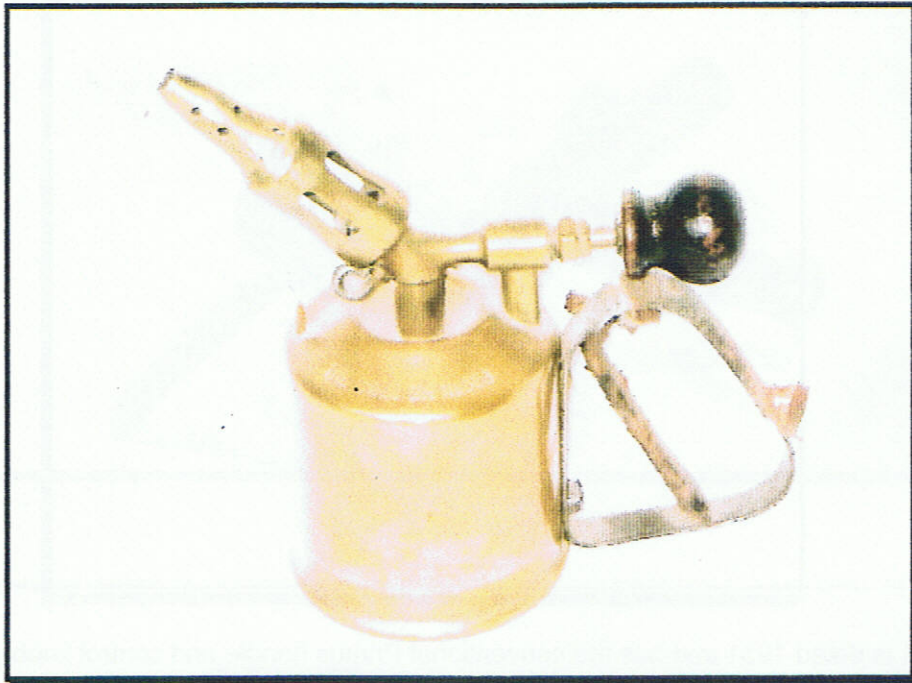
This later 851 is dated 1931 and has the conventional Primus handle and control knob with inset brass plate.



No 852 is pre 1911 and would have had a cane covered handle.

No 853 is pre 1911 and is also known as "THE SWEDISH", which is stamped on the top of the tank, with its number. It also has a very fine cone shaped burner, the nozzle of which is only  $\frac{5}{16}$  of an inch in diameter; presumably for fine soldering. The lamp has a wooden control knob and a cane bound handle. The curious thing about this little lamp is that under the tank top inscription is written on the side of the tank "A/B HJORTH & Co, STOCKHOLM, SOLE MAKERS OF THE GENUINE PRIMUS APPARATUS" and then the same wording in four different languages.

On the side of the tank it has the Primus trade mark around the cooking stove, underneath which is the original pre 1911 trade mark showing the two blowlamps directed towards a central sun.



The No 853

I can't remember ever having seen a lamp with a double Trade Mark, one above the other, in my 25 years of collecting.



No 854, has a strap around the burner for holding a soldering iron and is dated 1954.

Numbers 855, 856 and 857 are all conventional lamps with top filling tanks, 855 dating from 1932.

856 has a vertical burner and has no indication of the date of manufacture. There are two versions of No857, the wooden handle version being pre 1911 and the steel handle, 1930.



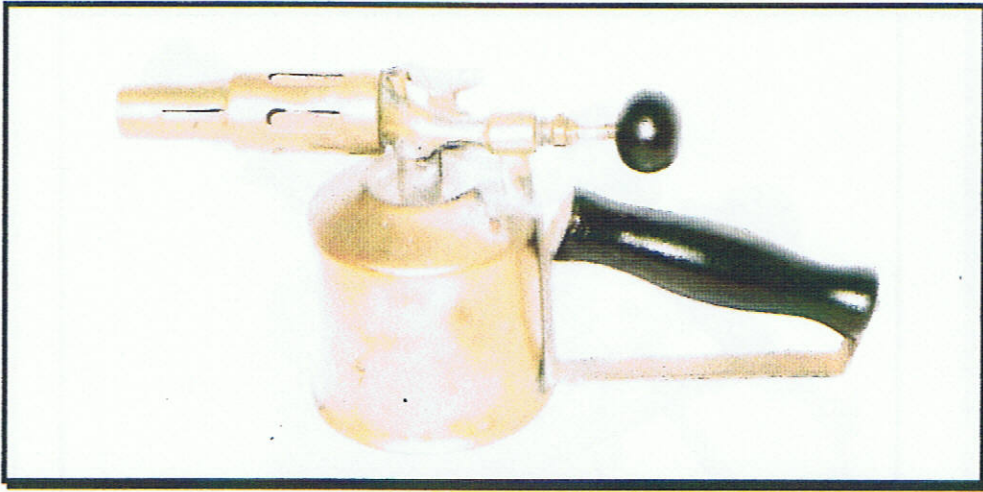


No855

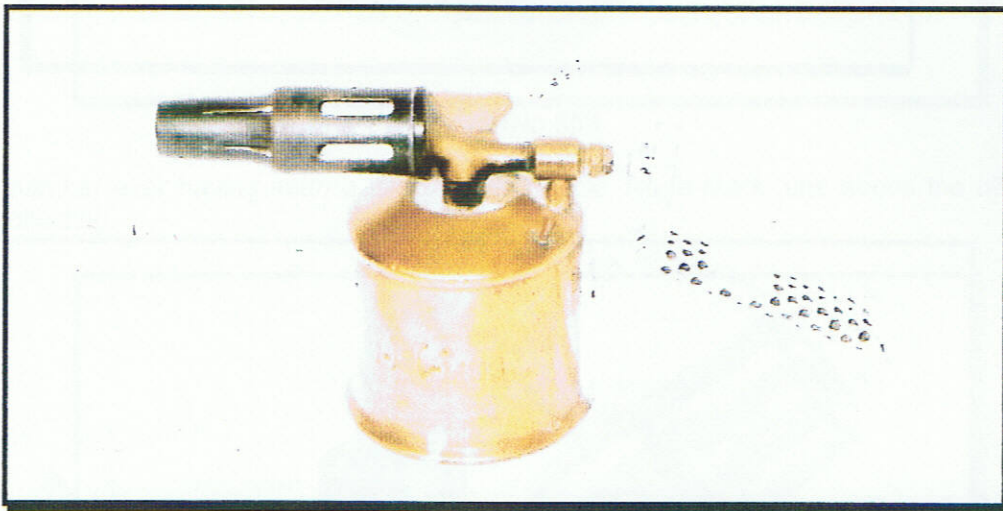


No856

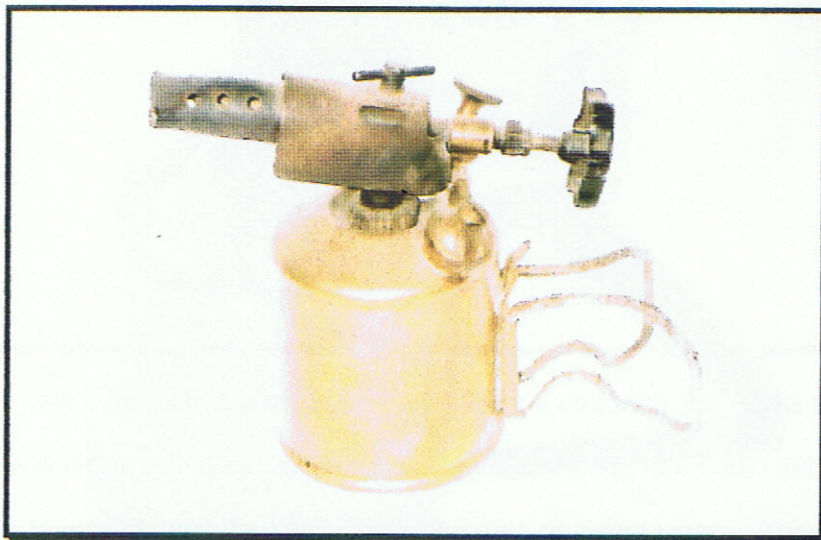




No857, pre 1911



No 857 of 1930



The final lamp in this series is the 859, which has a pump, wind shield and folding handles and was made in 1946.





The Editors 853 showing the double Trade Mark

### **RARE CLAYTON & LAMBERT TORCH**

Charles Smith has sent the following photographs of a rare Clayton & Lambert blow torch. It is known as "THE BOSS" paint burner and was the first true torch manufactured by C & L, although they had previously produced some fire pots.



This torch was patented on January 15<sup>th</sup> 1889 and appeared for sale in the early trade literature on June 1<sup>st</sup> 1889.



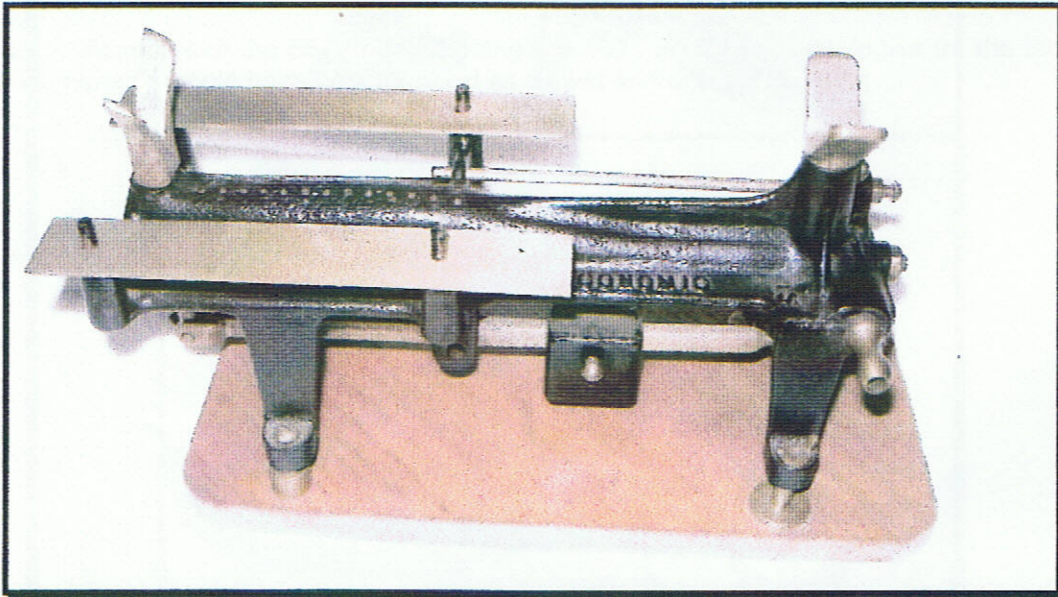
The tank was made from galvanized sheet metal and many of them probably rusted away over the years, which would explain why they are so rare today.



Note the rubber bulb, used to pressurise the tank.

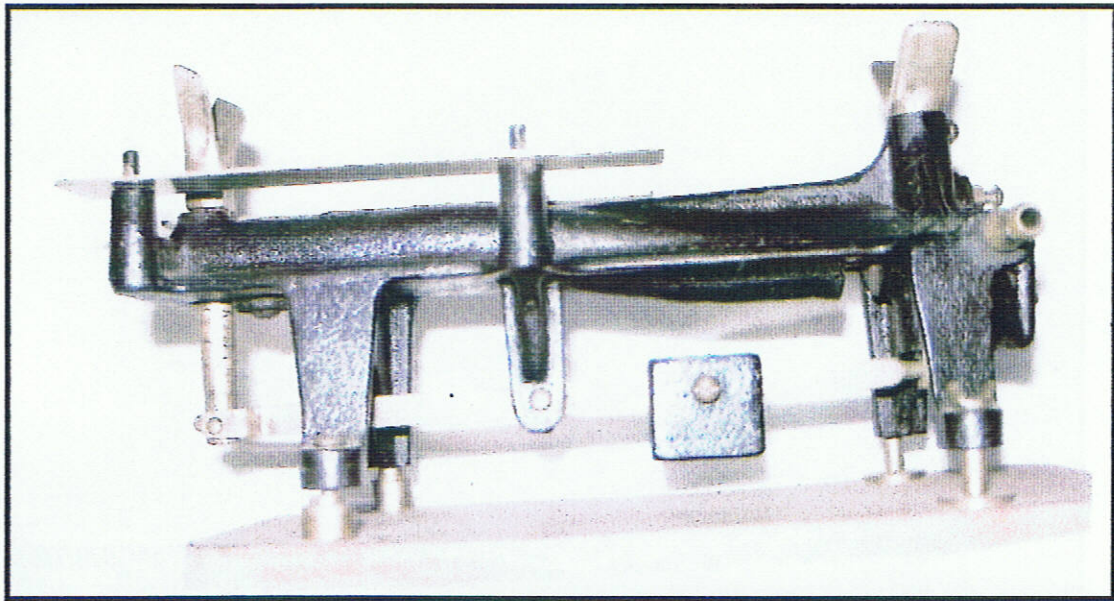
### ***IDENTITY & ASSISTANCE***

Although not a blowlamp, I felt I had to include the following photographs of this very interesting item. They were sent to Keith Hawkins with a request to identify what it might be.



The best guess so far is that it might be a soldering iron heater. It has a cast body, with "ECONOMIC No 15" along the body. There is a "V" notch at both ends and a loose brass plate along both sides. It is gas fired and was manufactured by C.H.BROOKS of Brunswick Street, Leicester.





There is a brass bar underneath which is fixed to a centre pivot and there is an adjustable counter balance weight on the bar which allows the front "V" notch to move up and down. But why you would need this balance for a soldering iron heater, I am not sure. The item was acquired from a plumber so if you have any ideas what it might be, the owner would be very grateful.

### **AUTUMN GATHERING 2008**

There is just room left to include some photographs of lamps seen at the Todington meeting.



This Bladon lamp was recently acquired by Keith Hawkins and has an unusual layout, with the burner at the bottom of the tank. If it is a conversion, it has been well engineered. Does anyone have any ideas as to what it was used for?





If I was marooned on a desert island and could only take one blowlamp, then it would have to be this Downey. Unfortunately I don't own it, that honour goes to John Tingle, but I am sure most readers will agree it is a beautiful lamp. To our members in the USA, if you have a spare tucked away in the corner of your shed, please let me know.



A pair of unusual Paquelin lamps, owned by John Tingle.





A rare British lamp, the vertical Burrige, owned by John Tingle



This lamp owned by Ken Longden, has no markings to indicate manufacture. Does anyone have any ideas as to country of origin; note the "rabbit ears" on the filler cap.





And finally a Malivert lamp, I think it was owned by Chris Naylor (My apologies if I have got it wrong, but the old memory plays tricks on me sometimes)

This is just a small sample of the lamps which were on display last year, and I hope you will agree that it will be a great pity if we don't have these sorts of meetings in the future.

### **CLASSIFIED**

**COLLECTION FOR SALE** – John Fowler of Bridgend has a collection of 400 blowlamps, which he is offering for sale as one lot. Amongst the collection are 14 engine starting lamps and a John Bull. If anyone is interested, contact the Editor and I will give you John's contact details.

**KEITH HAWKINS** is reducing his collection, so if there are any lamps you are particularly looking for, Keith would welcome a call on **01525 290122**

.....  
Blowlamp News is published in March, June, September and December. Any items for inclusion in the next issue should be with the Editor at least 4 weeks before the issue date.

Editor – Ray Hyland, 47 Lockington Crescent, Stowmarket, Suffolk, IP14 1DA, England.  
Telephone 01449 615648 Email [ray.hyland@btinternet.com](mailto:ray.hyland@btinternet.com)

**Acknowledgements** – Keith Hawkins, John Tingle, Charles Smith, Chris Naylor and Ken Longden.