

# ***BLOWLAMP NEWS***

No 66

DECEMBER

2003

The Newsletter of the Blowlamp Society - Founded by Les Adams, August 1992

---

In BN65 I published an extract from a patent drawing of a Greens blowlamp and asked the question "were they ever brought into manufacture, and if so, have any survived into preservation".

Nobody had listed one of these when I conducted my survey of British Blowlamps, so I assumed that it was another one which never progressed past the drawing board.

You can imagine my surprise on my return from the Toddington meeting when I received a call asking if I could help to identify a blowlamp, which one of our members had been offered. As the description unfolded, it was clear to me that what was being described could only be a Green's patent lamp and I suggested that the member should return to the seller and make an offer straight away.

As you will see from the photograph, the lamp did go into production and what a beautiful lamp it is.



The tank, control knob, handle and burner would lead you to think there was an association with Burrige, but on further reading the patent document, it was lodged by Walter Green and Alfred William Heath, who was a director of Samuel Heath and Sons of Leopold Street, Birmingham.

You have to ask why the burner and control valve were positioned so low in the body of the lamp, but apparently this avoided the need for a wick feed, as the supply of fuel was gravity fed directly to the valve.

If there is another one out there, I would like first refusal.



Although unclear from this photograph, there is an inscription on the tank which reads "PREMIER QUALITY POLLITT'S BRITISH BLOWLAMP SOLID DRAWN".

The engraving is not too clear in part and it is assumed to read POLLITT'S.

## **MEETINGS**

### **Autumn Gathering**

Saturday 25<sup>th</sup> October saw what is likely to be the last meeting at Toddington. Attendance was down, with none of our friends from Europe attending and I have to say they were sadly missed as they always bring along some great blowlamps.

Keith Hawkins again put in an enormous amount of work in organising the event, including twisting a few arms to boost the numbers, but overall the amount of blowlamps on show and for sale was disappointing.

Highlight of the day again was the catering, provided by Keith's stepson Dick and served up by the ever helpful band of ladies.

Keith has decided to step down as organiser, so we are looking for a volunteer to organise an event for next year. There was a time when we managed 2 meetings a year so we desperately need someone to take on the job.

### **Lochristi, BELGIUM – Saturday 14<sup>th</sup> March 2009**

Brigitte and Willy Mouton are again organising the meeting at Lochristi and those of you who have been before will, I am sure, want to go again. The event is always well organised, with a fantastic display of blowlamps and first class catering.

You will find an invitation included with this newsletter, so if you would like to go, please contact Brigitte and Willy by 15<sup>th</sup> February.

## **SUBSCRIPTIONS**

It's that time of year when we have to decide whether to renew our subscriptions to the Blowlamp Society. Fees will remain the same as last year; we just manage to hold our own with printing and postage costs, despite rises in both.

You will find a renewal form with this newsletter; can we all try to return them to Keith Hawkins by the end of January so we know what funds are available for next year.

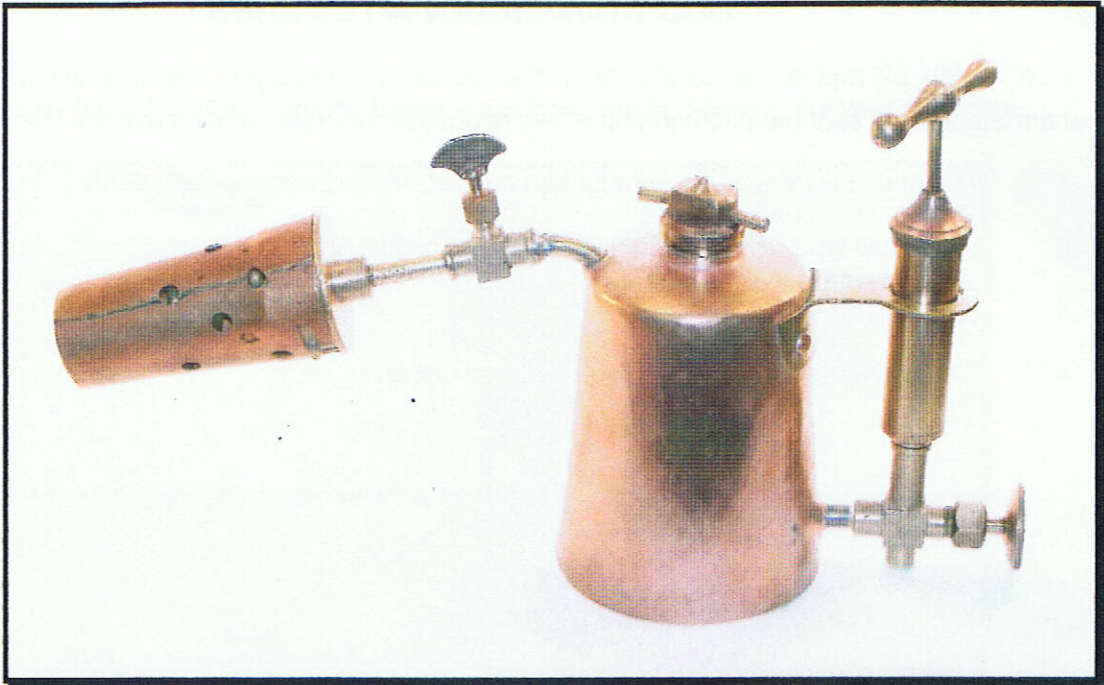
## ODD COPPER BLOWTORCHES

Graham Stubbs has sent me photographs of two oddball blowtorches which have the following features.

- 1 The fuel tanks are made from beaten copper, with brazed dovetail seams.
- 2 Crude coil type burner with a conical outer shield.
- 3 Shut off valve in line with the burner.
- 4 The appearance of being assembled from disparate parts.



This photograph shows the torch owned by Graham; note the rather odd looking pump handle, very reminiscent of a fire extinguisher.



The second torch is owned by Charles Smith

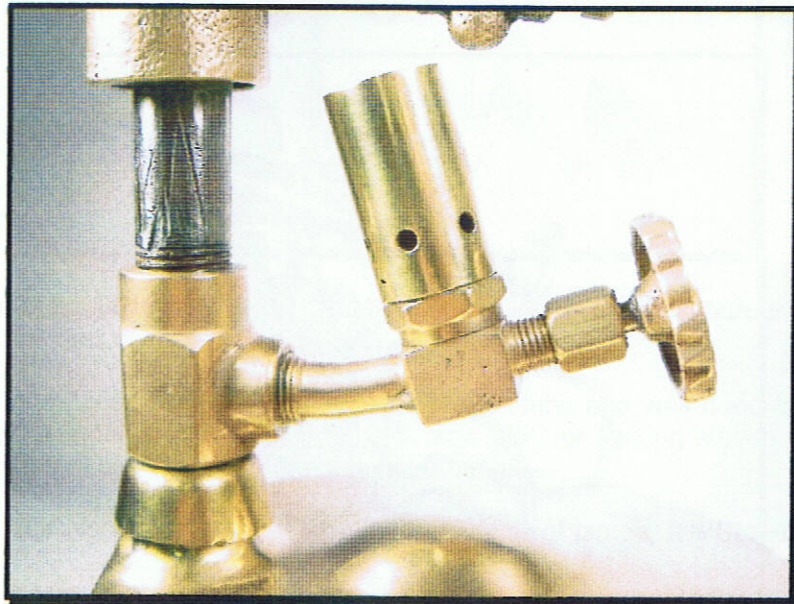
### ***PRE-HEATERS***

Here are some more photographs from Charles Smith showing two blow lamps which both have pre-heaters.

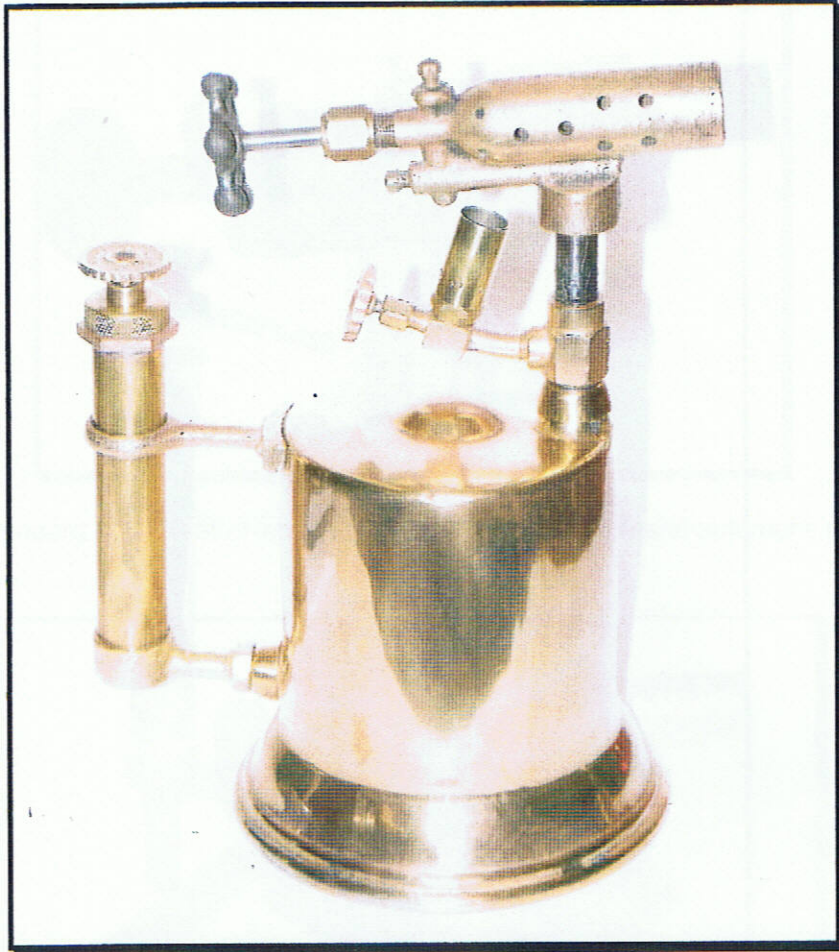
I have a late Sievert lamp with a pre-heater, which I found in an old Army & Navy store and was told that it was ex military, but the lamps owned by Charles are much more interesting.



A close up of the pre-heater coming directly from the fuel tank



This photograph shows the pre-heater attached to the burner stem.

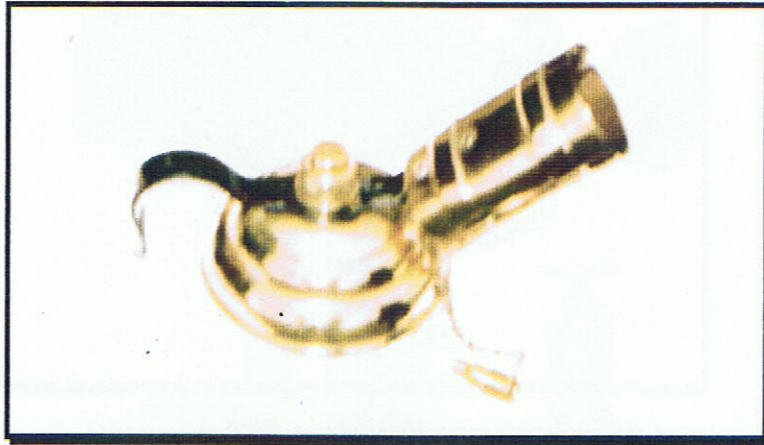


**PRIMUS 801 SERIES**  
By  
*Keith Hawkins*



Number 800 is a  $\frac{1}{4}$  pint petrol lamp with a pump. Why a pump is needed on such a small lamp is beyond me, but I expect someone thought it was necessary. Sievert also produced a similar lamp, the

207P. The 800 has folding handles and the burner tube is a slide on type, held in position by a screw, which also fixes the soldering iron holding bracket.



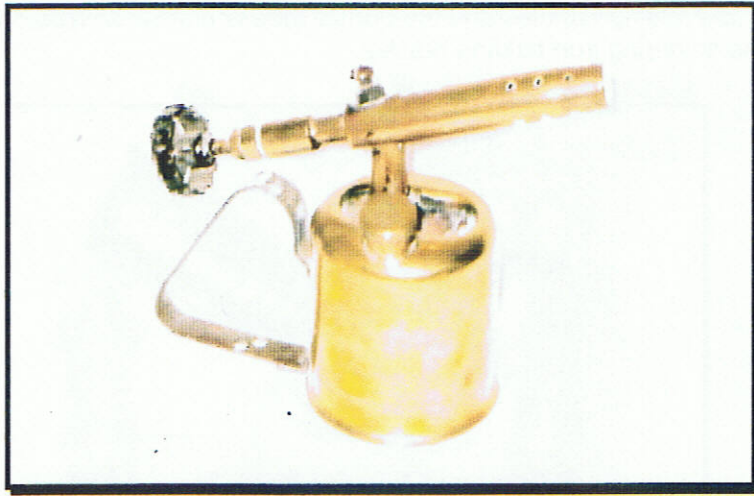
There are two separate lamps bearing the number 801 and they are quite different in appearance. The first lamp has a shallow, rounded tank with the burner at an angle of about 35 degrees and was used mainly in solicitor's offices for melting sealing wax.



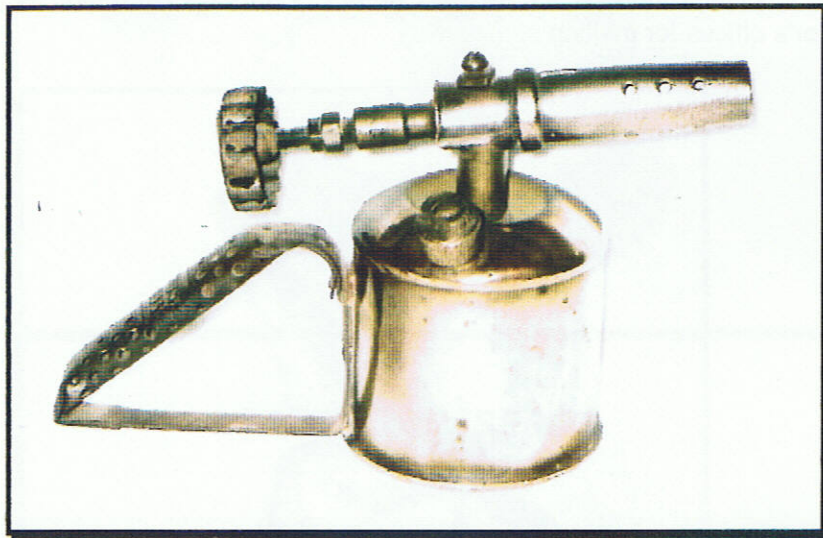
The second version of the 801 has a more erect tank and an almost vertical burner and was used to melt the wax on ski's at the start of each season.

Primus also made one called the "FIX", but with no burner tube and was used for lighting stoves and cookers. Another version of this lamp, the 1205, was also for lighting stoves and had a wire hook attached to the tank to enable it to hang from the stove burner.

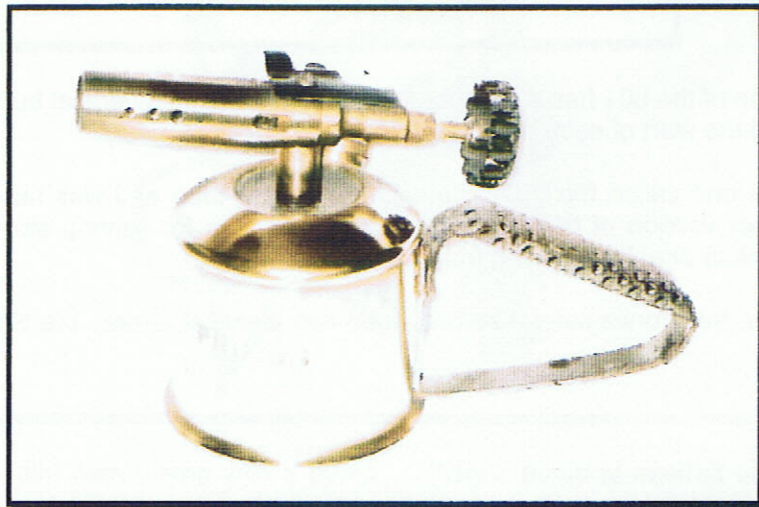
Not to be outdone, the Norwegians also produced two identical lamps, the Standard Hovik Verk No50 and No51.



Number 802 is a standard ¼ pint petrol lamp with rigid flat steel handle and automatic pricking. In 1940 it cost 12/3d (61p)



Number 803 is a ½ pint petrol lamp with an inclined burner and safety device built into the filler cap. A soldered on handle with Primus style design and model number on a plain area 2/3 of the way up.





Number 804 is a ¼ pint petrol lamp with a powerful inclined burner with automatic pricking and a safety valve. The filler is on the right and it has a numbered handle. The push fit burner tube is held in place by a screw which also secures the soldering iron bracket.



Number 805 is a ¼ pint petrol lamp and has an inclined burner with automatic pricking, a safety valve in the filler cap on the left and a pump on the right. The model number is stamped on the perforated steel handle.



Number 805F is a ¼ pint petrol lamp with an inclined, heavy duty, screw on burner, a pump on the right, filler on the left and a copper safety device under the burner. The model number is stamped on a perforated steel handle.

Other lamps in the series are numbers 806 and 807, which are both 7/8 pint capacity, with pumps in vertical handles. The 806 has a push fit burner tube and the 807 a screw on one. The 806 has a safety device in the filler and the 807 a copper safety device under the burner.

Number 808 is of 1 and 1/3 pint capacity with a screw on burner, otherwise very similar to the 807.

The pump handles are of brass and all the lamps have the same control knobs of the usual pressed steel type with brass inset.

There is also a number 804F in the 1940 catalogue, but I have no details.

## **A RARE FIND**

Janus Nooijen has been scouring ebay and has found this rare Clayton & Lambert No 100. This torch is listed with a 4 star rating in the Vintage Blowtorches book which means it is a very rare torch.



## **ENGINE STARTING LAMPS**

In the early years of engine development, many models required the use of a blowlamp either for the initial starting or in some cases continually whilst the engine was running.

As there were a large number of blowlamp manufacturers during that period, many of the engine manufacturers, such as Blackstone and Petter, had lamps made specifically for their engines.

Others, such as Hornsby and Campbell, decided to manufacture their own lamps, the result of which were usually quite large and heavy cast lamps.

I recently received some photographs from Norman Penny of a blowlamp manufactured for and by the Pool engine company. This is one engine manufacturer I had not heard of, and they originated in the village of Chipstable in Somerset. William Pool Senior established the business in 1847, as a wheelwright and his son Alfred developed the stationary engine side in the late 1890's.



As you can see the tank is of heavy cast construction and the burner coil is not unlike that used on the Hornsby lamps.



This is a blowlamp for the Campbell continuous lamp engine

**CLASSIFIED**

**For Sale** 2009 Blowlamp Society calendars. There are 2 available at £12-50, including postage.  
For details contact Ray Hyland on 01449 615648.

**Wanted** Sievert HSL2 contact Ray Hyland on 01449 615648

\*\*\*\*\*  
**Acknowledgements – Charles Smith, Graham Stubbs, Keith Hawkins, Norman Penny and Janus Nooijen.**

**Blowlamp News is published in March, June, September and December. Any item for inclusion in the next issue should be with the Editor at least 4 weeks before the issue date.**

**Editor – Ray Hyland, 47 Lockington Crescent, Stowmarket, Suffolk, IP14 1DA, England  
Telephone 01449 615648 Email [ray.hyland@btinternet.com](mailto:ray.hyland@btinternet.com)**